

MERLE K (MUDHOLE) SMITH (CDV)(PACV) 11 SE UTC-9(-8DT)

N60°29.50' W145°28.65'

ANCHORAGE

53 B ARFF Index—See Remarks NOTAM FILE CDV

H-1B, L-1A, 3E, 4H

RWY 09-27: H7500X150 (ASPH-GRVD) S-90, D-153, 2D-280

IAP

PCR 977 F/AX/T HIRL

RWY 09: ODALS. VASI(V4L)—GA 3.0° TCH 41'. RVR-TR Antenna. Rgt tfc.

RWY 27: MALSR. VASI(V4L)—GA 3.0° TCH 57'. RVR-TR Pole.

RWY 16-34: 1934X30 (GRVL) 0.6% up N

RWY 34: Trees.

RUNWAY DECLARED DISTANCE INFORMATION

RWY 09: TORA-7500 TODA-7500 ASDA-7500 LDA-7500

RWY 27: TORA-7500 TODA-7500 ASDA-7500 LDA-7500

ARRESTING GEAR/SYSTEM

RWY 27: EMAS

SERVICE: LGT ACTIVATE MALSR Rwy 27, ODALS Rwy 09, VASI Rwy 09 and 27, HIRL Rwy 09-27—CTAF. Rwy 09 VASI unusbl byd 4 NM, due to obsts.

AIRPORT REMARKS: Attended 1500-0130Z. Moose and birds invof arpt and rws. Erratic winds. Class I, ARFF Index B. CLOSED to ACR ops more than 30 pax seats exc 24 hr PPR in writing—Amgr Box 598, Cordova, AK 99574. Arpt svcs and cond rptg avbl only durg maint duty hr. Aft hr—Amgr. Btn 0100-1600Z snow removal and deice NA.

Rwy cond rpt reflects day ops only. Rwy 16-34 ACR ops more than 30 pax seats NA. Rwy 16-34 36 in orange cones May 1—Oct 25. ARFF eqpt durg ACR act only. Arpt sand larger gradation than FAA rcmd/see AC150/5200-30. TSA regulated arpt. See 49 CFR 1542. Gates and doors must be secured at all times; Info—Amgr.

AIRPORT MANAGER: 907-424-3202

WEATHER DATA SOURCES: ASOS 134.8 (907) 424-5900. (WX CAM)

COMMUNICATIONS: CTAF 123.6

CORDOVA RCO 122.2 123.6 (JUNEAU RADIO)

ANCHORAGE CENTER APP/DEP CON 269.4 133.6 119.3

AIRSPACE: CLASS E svc continous.

RADIO AIDS TO NAVIGATION: NOTAM FILE CDV.

GLACIER RIVER NDB (HW) 404 GCR N60°29.93' W145°28.47' at fld. 58/17E.

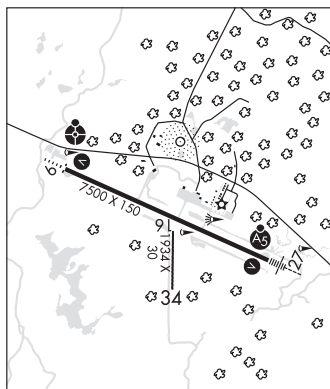
ORCA BAY NDB (HW) 233 ALJ N60°28.79' W146°35.25' 070° 33.0 NM to fld. 31/18E.

NDB unusable:

321°-341° byd 40NM blo 7,400'

ILS/DME 110.7 I-CDV Chan 44 Rwy 27. Class IE. LOC unusable beyond 10° north of course.

COMM/NAV/WEATHER REMARKS: For a toll free call to Juneau FSS dial 1-866-297-2236. Cordova Wx-424-7614 OR 122.65



COTTONWOOD LAKE SPB (See WASILLA on page 259)

COUNCIL (K29) 1 N UTC-9(-8DT) N64°53.80' W163°42.21'

NOME

100 NOTAM FILE OME

L-3A, 3C, 4H

RWY 10-28: 3000X60 (TURF) 0.4% up W

RWY 10: Brush.

RWY 28: Brush.

AIRPORT REMARKS: Unattended. Rwy cond not monitored, recommend visual inspection prior to ldg. Rwy not maintained dur winter. Rwy 10-28 nstd markings, marked with cones and thld panels. Thld panels faded to white. Tall grass on rwy and ramp.

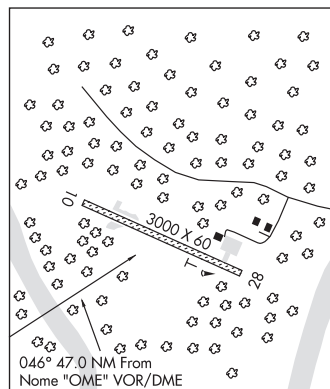
AIRPORT MANAGER: 907-443-2500

COMMUNICATIONS: CTAF 122.9

RADIO AIDS TO NAVIGATION: NOTAM FILE OME.

NOME (H) VOR/DME 115.0 OME Chan 97 N64°29.11' W165°15.19' 046° 47.0 NM to fld. 95/11E.

COMM/NAV/WEATHER REMARKS: For a toll free call to Nome FSS dial 1-800-478-8400. For a toll free call to Fairbanks FSS dial 1-866-248-6516.



046° 47.0 NM From
Nome "OME" VOR/DME