

BATTLE CREEK EXEC AT KELLOGG FLD (BTL)(KBLT) P (ANG) 3 W UTC-5(-4DT) N42°18.39'

CHICAGO

W85°15.01'

H-5E, 10F, L-281

952 B LRA NOTAM FILE BTL

IAP, AD

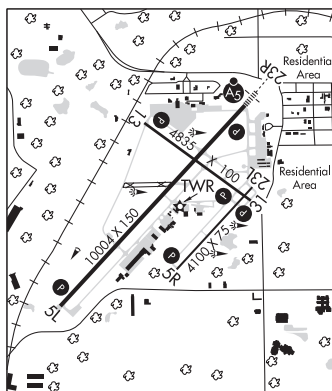
RWY 05L-23R: H10004X150 (ASPH-GRVD) S-100, D-200, 2S-175, 2D-400, 2D/2D2-900 PCN 27 F/B/X/T HIRL**RWY 05L:** REIL. PAPI(P4L)—GA 3.0° TCH 48'. RVR-R Tree. 0.4% down.**RWY 23R:** MALSR. PAPI(P4L)—GA 3.0° TCH 49'. RVR-T Tree.**RWY 13-31:** H4835X100 (ASPH-GRVD) S-40, D-65, 2S-82, 2D-100 PCN 15 F/C/X/T MIRL**RWY 13:** REIL. PAPI(P4L)—GA 3.0° TCH 42'. Pole.**RWY 31:** REIL. PAPI(P4L)—GA 3.0° TCH 25'. Tree.**RWY 05R-23L:** H4100X75 (ASPH) S-12.5 PCN 13 F/C/X/T MIRL**RWY 05R:** REIL. PAPI(P4L)—GA 3.0° TCH 25'. Tree.**RWY 23L:** REIL. PAPI(P4L)—GA 3.0° TCH 30'. Tree.**LAND AND HOLD—SHORT OPERATIONS**

LDG RWY	HOLD—SHORT POINT	AVBL LDG DIST
RWY 05L	13-31	7000

RUNWAY DECLARED DISTANCE INFORMATION**RWY 05L:** TORA-10004 TODA-10004 ASDA-10004 LDA-10004**RWY 05R:** TORA-4100 TODA-4100 ASDA-4100 LDA-4100**RWY 13:** TORA-4835 TODA-4835 ASDA-4835 LDA-4835**RWY 23L:** TORA-4100 TODA-4100 ASDA-4100 LDA-4100**RWY 23R:** TORA-10004 TODA-10004 ASDA-10004 LDA-10004**RWY 31:** TORA-4835 TODA-4835 ASDA-4835 LDA-4835**SERVICE:** S4 FUEL 100LL, JET A+ OX 3 LGT When ATCT clsd actvt MALSR Rwy 23R; REIL Rwy 05L, 05R, 23L, 13, & 31; PAPI Rwy 05L, 23R, 05R, 23L, 13, & 31; HIRL Rwy 05L-23R; MIRL Rwy 05R-23L & 13-31—CTAF.**MILITARY—** FUEL J8(Mil); (C269-969-8400) (NC-100LL)**NOISE:** Voluntary noise abatement procs in effect.**AIRPORT REMARKS:** Attended continuously. Deer and lrg birds on and infov aprt. Extsv pilot trg wi 25 NM of BTL. Arpt FICON mntd wkdays 1200-2030Z†; not mntd all otr times. Twy F rstrd to DOD/Mil use only. 24 hrs pn for cust, call 269-965-3349. Rwy 05R and Rwy 23R right tfc when twr clsd. Snow removal ops inpr dur winter months; eqpt ops mnt CTAF when twr clsd. Mowing ops inpr Mar-Oct. Rwy 05R-23L: Extsv cracking and vegetation. Landing fee. NOTE: See Special Notices—Aerobatic Practice Area.**MILITARY REMARKS:** ANG BASH levels as defined in AFI 91-202. Aprn/twy usbl only O/R, OTRW clsd—coord with 110th Wing Safety at C269-969-3438.**AIRPORT MANAGER:** 269-966-3470**WEATHER DATA SOURCES:** ASOS (269) 964-0283 ASOS freq u/s indef. LAWRS.**COMMUNICATIONS:** CTAF 126.825 ATIS 128.325 UNICOM 122.95**BATTLE CREEK RCO** 122.2 (LANSING RADIO)Ⓡ **GREAT LAKES APP/DEP CON** 119.2 (1030-0500Z†)Ⓡ **CHICAGO CENTER APP/DEP CON** 127.55 (0500-1030Z†)**BATTLE CREEK TOWER** 126.825 (1200-0400Z†) **GND CON** 121.7**CLEARANCE DELIVERY PHONE:** For CD when ATCT clsd ctc Great Lakes Apch at 269-459-3344, when Apch clsd ctc Chicago ARTCC at 630-906-8921.**AIRSPACE:** CLASS D svc 1200-0400Z†; other times CLASS G.**RADIO AIDS TO NAVIGATION:** NOTAM FILE GRR.**VICTORY (H) (H) VOR/DME** 115.95 VIO Chan 106(Y) N42°47.20' W85°29.82' 163° 30.8 NM to fld. 802/4W. DME unmonitored.

DME unusable:

011°-314° byd 30 NM blo 3,000'

BATOL NDB (MHW/LOM) 272 BT N42°21.72' W85°11.06' 225° 4.4 NM to fld. 891/4W. NOTAM FILE BTL.**ILS** 110.5 I-BTL Rwy 23R. Class IB. LOM BATOL NDB. LOC and glideslope unmonitored when ATCT clsd.**BAUER FLD** (See REESE on page 234)