

## TRAVERSE CITY

**CHERRY CAPITAL** (TVC)(KTVC) P (CG) 2 S UTC-5(-4DT) N44°44.49' W85°34.91'

624 B ARFF Index—See Remarks NOTAM FILE TVC MON Airport

**RWY 10-28:** H7016X150 (ASPH-GRVD) S-116, D-193, 2S-165,

2D-326 PCR 470 F/B/X/T HIRL

**RWY 10:** MALS. PAPI(P4L)—GA 3.0° TCH 55'. Tree.

**RWY 28:** MALS. PAPI(P4L)—GA 3.0° TCH 45'. Tower.

**RWY 18-36:** H5378X150 (ASPH-GRVD) S-79, D-127, 2S-140,

2D-215 PCR 310 F/B/X/T MIRL

**RWY 18:** VASI(V4L)—GA 3.0° TCH 47'. Thld dsplcd 272'. Tree.

**RWY 36:** REIL. VASI(V4L)—GA 3.5° TCH 53'. Fence.

**LAND AND HOLD—SHORT OPERATIONS**

LDG RWY	HOLD—SHORT POINT	AVBL LDG DIST
RWY 18	10-28	2850
RWY 28	18-36	5950

**RUNWAY DECLARED DISTANCE INFORMATION**

**RWY 10:** TORA-7016 TODA-7016 ASDA-7016 LDA-7016

**RWY 18:** TORA-5378 TODA-5378 ASDA-5108 LDA-4838

**RWY 28:** TORA-7016 TODA-7016 ASDA-7016 LDA-7016

**RWY 36:** TORA-5378 TODA-5378 ASDA-5108 LDA-5108

**SERVICE:** S4 FUEL 100LL, JET A+ LGT When ATCT clsd actvt MALS

Rwy 10 & 28; REIL Rwy 36; HIRL Rwy 10-28; MIRL Rwy

18-36—CTAF. PAPI Rwy 10 & 28; VASI Rwy 18 & 36 opr consly.

**AIRPORT REMARKS:** Attended 0900-0600Z. Parachute Jumping. During hrs when arpt is unattended call arpt ops 231-313-0928. For FBO hrs of ops call 231-929-1126. Birds on and infov arpt. 100LL self svc fuel avbl with credit card during FBO hrs only. Arpt sfc cond unmon btn 0600-0900Z. Parasailing ops 1.5 NM northeast of arpt from Memorial Day to Labor Day 600' AGL from SR-SS daily. Class I, ARFF Index B. 48 hr PPR for unsked acr ops with over 30 psgr seats—call amgr. Twy C-2/C-3 east of Twy C not avbl to ACR act. No general avn act on the air carrier ramp. Snow removal ops in progress winter months, Snow Command will be monitoring CTAF during non-twr hours. Acft ldg/departing TVC should announce their intentions on CTAF when twr clsd. Fit crews should read back all advisory information provided by Snow Command. All tsnt act chrgd ldg, ovngt ramp prkg fee exc mil.

**AIRPORT MANAGER:** 231-947-2250

**WEATHER DATA SOURCES:** ASOS (231) 486-2920

**COMMUNICATIONS:** CTAF 124.2 ATIS 119.175 UNICOM 122.95

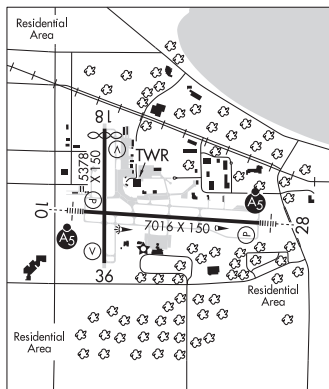
TRAVERSE CITY RCO 122.2 (LANSING RADIO)

® MINNEAPOLIS CENTER APP/DEP CON 132.9

TRAVERSE CITY TOWER 124.2 (1200-0200Z EST; 1100-0200Z EDT) GND CON 121.8

**CLEARANCE DELIVERY PHONE:** For CD when ATCT is clsd ctc FSS via rco, if una ctc Minneapolis ARTCC at 651-463-5588.

**AIRSPACE:** CLASS D svc 1200-0200Z EST, 1200-0300Z EDT; other times CLASS E.



GREEN BAY

H-2L, L-31B

IAP, AD

CONTINUED ON NEXT PAGE

CONTINUED FROM PRECEDING PAGE

RADIO AIDS TO NAVIGATION: NOTAM FILE TVC.

TRAVERSE CITY (VH) (DH) VORW/DME 114.6 TVC Chan 93 N44°40.07' W85°33.00' 345° 4.6 NM to fld. 912/2W.

DME unusable:

- 050°-060° byd 30 NM
- 050°-060° byd 9 NM blo 12,500'
- 061°-120° blo 12,500'
- 061°-120° byd 30 NM
- 156°-158° byd 38 NM blo 5,000'

VOR unusable:

- 024°-034° byd 10 NM blo 5,000'
- 050°-060° byd 30 NM
- 050°-060° byd 9 NM blo 12,500'
- 061°-120° blo 12,500'
- 061°-120° byd 30 NM
- 130°-143° byd 40 NM blo 5,000'
- 130°-143° byd 52 NM
- 144°-187° byd 40 NM
- 188°-198° byd 40 NM blo 12,000'
- 188°-198° byd 64 NM
- 199°-209° byd 40 NM
- 210°-228° byd 10 NM
- 229°-264° byd 40 NM
- 265°-275° byd 40 NM blo 3,500'
- 265°-275° byd 62 NM
- 276°-311° byd 40 NM
- 312°-322° byd 40 NM blo 5,000'
- 312°-322° byd 51 NM
- 323°-049° byd 40 NM
- 358°-013° byd 40 NM

GWENN NDB (MHW/LOM) 365 TV N44°44.07' W85°25.74' 279° 6.5 NM to fld. 895/5W. NDB unmonitored when TVC ATCT clsd.

ILS/DME 110.7 I-TYK Chan 44 Rwy 10. Class IE. Unmonitored when ATCT clsd.

ILS 110.7 I-TVC Rwy 28. Class IE. LOM GWENN NDB. ILS and LOM unmonitored when ATCT clsd. LOC unusable byd 26° left and right of course.

COMM/NAV/WEATHER REMARKS: Emerg frequency 121.5 not avbl at twr.

TRIPP CREEK (See ST JOHNS on page 240)

TROY

OKLAND/TROY (VLL)(KVLL) 2 E UTC-5(-4DT) N42°32.58' W83°10.67'

727 B TPA-1727(1000) NOTAM FILE VLL

RWY 10-28: H3549X60 (ASPH) MIRL

RWY 10: PAPI(P2R)-GA 3.75° TCH 44'. Tree.

RWY 28: PAPI(P2L)-GA 3.75° TCH 44'. Tree.

SERVICE: FUEL 100LL, JET A+ LGT ACTIVATE PAPI Rwy 10 and Rwy 28 and MIRL Rwy 10-28-CTAF.

AIRPORT REMARKS: Attended 1300-2300Z±. Deer and lrg birds on and invof arpt. No touch and go landings or practice traffic patterns. Rwy 10 +3' berm 316' fm thld.

AIRPORT MANAGER: 248-666-3900

WEATHER DATA SOURCES: AWOS-3 119.475 (248) 288-4649.

COMMUNICATIONS: CTAF/UNICOM 123.05

Ⓡ DETROIT APP/DEP CON 132.35

CLEARANCE DELIVERY PHONE: For CD etc Detroit Apch at 734-955-1404.

RADIO AIDS TO NAVIGATION: NOTAM FILE PTK.

PONTIAC (L) DME 111.0 PSI Chan 47 N42°42.05'

W83°31.97' 121° 18.4 NM to fld. 1149.

DME unusable:

- 100°-195° byd 15 NM blo 4,000'
- 100°-195° byd 30 NM blo 6,000'
- 355°-070° byd 30 NM blo 3,500'

DETROIT  
COPTER  
L-28J, A  
IAP



TUSCOLA AREA (See CARO on page 168)

TWO HEARTED AIRSTRIP (See NEWBERRY on page 226)

UNIVERSITY AIRPARK (See BATH on page 157)