

**BEMIDJI RGNL** (BJI)(KBJI) 3 NW UTC-6(-5DT) N47°30.64' W94°56.08'

TWIN CITIES

1391 B ARFF Index—See Remarks NOTAM FILE BJI

H-2I, L-14H

RWY 13-31: H7004X150 (ASPH-GRVD) S-75, D-200

IAP, AD

PCN 11 F/B/Y/U HIRL

RWY 13: MALS. PAPI(P4L)—GA 3.0° TCH 45'.

RWY 31: MALS. PAPI(P4L)—GA 3.0° TCH 45'.

RWY 07-25: H5700X150 (ASPH-GRVD) S-75, D-200

PCN 11 F/B/Y/U MIRL

RWY 07: REIL. PAPI(P4L)—GA 3.0° TCH 44'.

RWY 25: REIL. PAPI(P4L)—GA 3.0° TCH 47'.

**RUNWAY DECLARED DISTANCE INFORMATION**

RWY 07: TORA-5700 TODA-5700 ASDA-5700 LDA-5700

RWY 13: TORA-7002 TODA-7002 ASDA-7002 LDA-7002

RWY 25: TORA-5700 TODA-5700 ASDA-5700 LDA-5700

RWY 31: TORA-7002 TODA-7002 ASDA-7002 LDA-7002

**SERVICE:** S4 FUEL 100LL, JET A OX 3, 4 LGT HIRL Rwy 13-31

preset on low ints, to incr ints and ACTIVATE REIL Rwy 07-25; MIRL

Rwy 07-25; MALS. Rwy 13 and Rwy 31, HIRL Rwy 13-31—CTAF.

PAPI Rwy 07, Rwy 25, Rwy 13 and Rwy 31 opr continuously.

**AIRPORT REMARKS:** Attended Mon 1300-0300Z‡, Tue-Fri 1200-0300Z‡,

Sat-Sun 1400-2300Z‡. Deer and birds on and in/ov arpt. Snow

removal crews monitor CTAF during all air carrier operations for airfield

cond info. ARFF crews monitor CTAF during all air carrier operations. Class I ARFF Index A, 48 hr PPR for unscheduled

air carrier ops with more than 30 passenger seats, call arpt manager 218-444-2438.

**AIRPORT MANAGER:** 218-558-5190**WEATHER DATA SOURCES:** AWOS-3 119.275 (218) 755-2575.**COMMUNICATIONS:** CTAF/UNICOM 122.8

RCO 122.3 (PRINCETON RADIO)

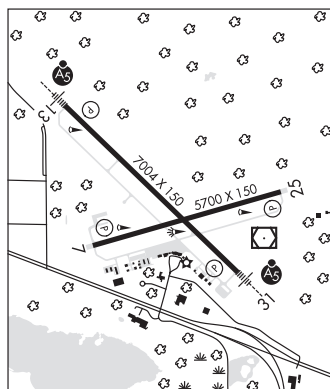
Ⓡ MINNEAPOLIS CENTER APP/DEP CON 134.75

**CLEARANCE DELIVERY PHONE:** For CD if una to ctc on FSS freq, ctc Minneapolis ARTCC at 651-463-5588.**AIRSPACE:** CLASS E svc 1045-0545Z‡ Mon-Sat, 1400-0545Z‡ Sun; other times CLASS G.**RADIO AIDS TO NAVIGATION:** NOTAM FILE BJI.

LAKE BEMIDJI (T) (T) VOR/DME 110.0 IDJ Chan 37 N47°30.46' W94°55.40' at fld. 1384/1E.

ILS/DME 109.35 I-BJI Chan 30(Y) Rwy 25. Class IA. Unmonitored.

ILS 111.9 I-MDI Rwy 31. Class IE. Glideslope unusable for cpd apch blw 2,126' MSL.

**BENSON MUNI** (BBB)(KBBB) 2 W UTC-6(-5DT) N45°19.92' W95°39.04'

TWIN CITIES

1039 B NOTAM FILE BBB

L-14H

RWY 14-32: H4000X75 (ASPH) S-40, D-50 MIRL

IAP

RWY 14: REIL. PAPI(P4L)—GA 3.0° TCH 40'. Brush. Rgt tfc.

RWY 32: REIL. PAPI(P4L)—GA 3.0° TCH 41'. Trees.

**SERVICE:** S2 FUEL 100LL, JET A LGT MIRL Rwy 14-32 preset low ints, to incr ints and ACTIVATE REIL Rwy 14 and Rwy 32; PAPI Rwy 14 and Rwy 32; MIRL Rwy 14-32—CTAF. Rwy 14 PAPI unusable byd 2 NM.**AIRPORT REMARKS:** Unattended. Self svc fuel avbl 24 hrs with credit card.

Category C and D acft ops prohibited.

**AIRPORT MANAGER:** (320) 368-2703**WEATHER DATA SOURCES:** AWOS-3PT 118.45 (320) 843-3242.**COMMUNICATIONS:** CTAF/UNICOM 122.8

MINNEAPOLIS CENTER APP/DEP CON 125.5

**CLEARANCE DELIVERY PHONE:** For CD ctc Minneapolis ARTCC at 651-463-5588.**RADIO AIDS TO NAVIGATION:** NOTAM FILE MOX.

MORRIS (T) (T) VOR/DME 109.6 MOX Chan 33 N45°33.93'

W95°58.16' 131° 19.4 NM to fld. 1130/5E. vDME

unmonitored.

