

MAPLE LAKE MUNI—BILL MAVENCAMP SR FLD (MGG)(KMG) 1 NE UTC-6(-5DT) N45°14.16' TWIN CITIES
 W93°59.14' L-14H, A
 1028 B NOTAM FILE MGG IAP, AD

RWY 10-28: H2796X60 (ASPH) LIRL(NSTD)

RWY 10: Thld dsplcd 100'. P-line.

RWY 28: Trees.

SERVICE: FUEL 100LL LGT Rwy 10-28 nstd LIRL due to 400' spacing
 btn lgts, 20' fm edge.

AIRPORT REMARKS: Unattended. Migratory waterfowl on and in/ov arpt. Fuel
 avbl H24 with credit card. One tkof/ldg per fit oprn, no tgl or trg.

AIRPORT MANAGER: 320-963-3738

WEATHER DATA SOURCES: AWOS-3 128.325 (320) 963-3300.

COMMUNICATIONS: CTAF/UNICOM 122.8

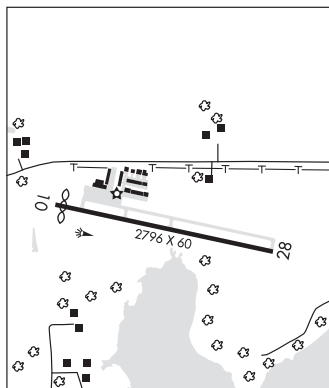
Ⓜ MINNEAPOLIS APP/DEP CON 126.5

CLEARANCE DELIVERY PHONE: For CD ctc Minneapolis Apch at
 612-726-9086.

RADIO AIDS TO NAVIGATION: NOTAM FILE PNM.

DARWIN (L) DME 109.0 DWN Chan 27 N45°05.25'

W94°27.23' 066° 21.8 NM to fld. 1130.



MARSHALL

SOUTHWEST MINNESOTA RGNL MARSHALL/RYAN FLD (MML)(KMML) 1 W UTC-6(-5DT) OMAHA
 N44°27.10' W95°49.47' H-21, L-121
 1183 B NOTAM FILE MML IAP

RWY 12-30: H7221X100 (ASPH) S-72, D-105 PCN 27 F/B/X/T HIRL

RWY 12: MALS. PAPI(P4L)—GA 3.0° TCH 50'.

RWY 30: MALS. PAPI(P4L)—GA 3.0° TCH 32'.

RWY 02-20: H3999X75 (ASPH) MIRL

RWY 02: REIL. PAPI(P4L)—GA 3.0° TCH 32'.

RWY 20: REIL. PAPI(P4L)—GA 3.0° TCH 57'.

SERVICE: S4 FUEL 100LL, JET A LGT ACTIVATE MALS Rwy 12;
 MALS Rwy 30; REIL Rwy 02 & 20; PAPI Rwy 12, 30, 02, & 20; HIRL
 Rwy 12-30; MIRL Rwy 02-20—CTAF.

AIRPORT REMARKS: Attended Mon-Thu 1400-2300Z. For svc after hrs call
 507-532-3164. Self svc fuel avbl 24 hrs with credit card.

AIRPORT MANAGER: 507-537-6773

WEATHER DATA SOURCES: AWOS-3PT 120.150 (507) 532-5269.

COMMUNICATIONS: CTAF/UNICOM 122.8

MARSHALL RCO 122.5 (PRINCETON RADIO)

MINNEAPOLIS CENTER APP/DEP CON 127.1

GCO 121.725 (MINNEAPOLIS CENTER and FLIGHT SERVICES)

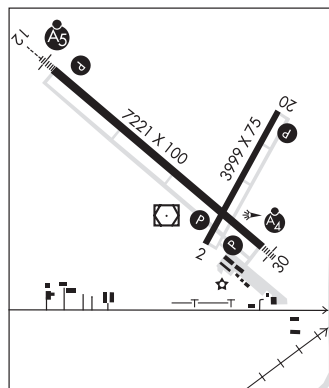
CLEARANCE DELIVERY PHONE: For CD if una to ctc on FSS freq, ctc Minneapolis
 ARTCC at 651-463-5588.

RADIO AIDS TO NAVIGATION: NOTAM FILE MML.

MARSHALL (T) (T) VORW/DME 111.0 MML Chan 47 N44°26.90' W95°49.49' at fld. 1180/5E. unmonitored.

GARNO NDB (LOMW) 253 GB N44°30.12' W95°54.66' 124° 4.8 NM to fld. 1178/5E.

ILS 109.7 I-GBY Rwy 12. LOM GARNO NDB. Unmonitored.



MARSHALL N44°26.90' W95°49.49' NOTAM FILE MML. OMAHA
 (T) (T) VORW/DME 111.0 MML Chan 47 at Southwest Minnesota Rgnl Marshall/Ryan Fld. 1180/5E. unmonitored. L-121
 RCO 122.5 (PRINCETON RADIO)