

**CLINTON RGNL** (GLY)(KGLY) 4 E UTC-6(-5DT) N38°21.28' W93°40.75'

**KANSAS CITY**  
H-5C, L-27A  
IAP

823 B NOTAM FILE GLY

**RWY 18-36:** H5000X75 (CONC) S-60, 2D-72 MIRL

**RWY 18:** REIL. PAPI(P4L)—GA 3.0° TCH 39'.

**RWY 36:** REIL. PAPI(P4L)—GA 3.0° TCH 40'.

**RWY 04-22:** H4001X60 (ASPH) S-12.5, D-16 MIRL

**RWY 04:** REIL. PAPI(P4L)—GA 3.5° TCH 39'. Trees.

**RWY 22:** REIL. PAPI(P4L)—GA 3.5° TCH 39'.

**SERVICE:** S4 FUEL 100LL, JET A LGT MIRL Rwy 04-22 and Rwy 18-36 oper dusk-0400Z†, after 0400Z† ACTIVATE MIRL Rwy 04-22 and Rwy 18-36—CTAF. ACTIVATE REIL Rwy 04, Rwy 18, Rwy 22, and Rwy 36; PAPI Rwy 04, Rwy 18, Rwy 22 and Rwy 36—CTAF.

**AIRPORT REMARKS:** Attended Mon-Fri 1400-2300Z†. Fuel avbl 24 hrs, single point Jet A avbl, after hrs call arpt manager, 660-885-8889.

**AIRPORT MANAGER:** (660) 885-8889

**WEATHER DATA SOURCES:** AWOS-3PT 120.475 (660) 885-3851.

**COMMUNICATIONS:** CTAF/UNICOM 122.8

RCO 122.4 (COLUMBIA RADIO)

Ⓡ **WHITEMAN APP CON** 127.45 (Opr 1300-0500Z† Mon-Fri;

1400-2300Z† Sat-Sun; clsd hol) other times ctc

Ⓡ **WHITEMAN DEP CON** 125.925 (Opr 1300-0500Z† Mon-Fri;

1400-2300Z† Sat-Sun; clsd hol) other times ctc

Ⓡ **KANSAS CITY CENTER APP/DEP CON** 135.575 (Opr 0500-1300Z† Mon-Fri; 2300-1400Z† Sat-Sun; clsd hol)

**CLEARANCE DELIVERY PHONE:** For CD if una to ctc on FSS freq, ctc Whiteman Apch at 660-687-3132. When Whiteman Apch is clsd, ctc Kansas City ARTCC at 913-254-8508.

**RADIO AIDS TO NAVIGATION:** NOTAM FILE COU.

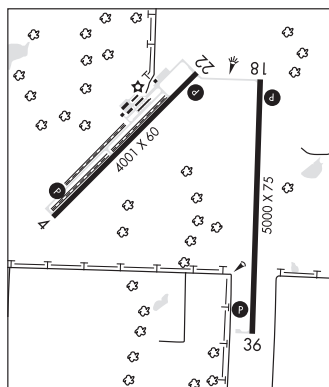
**BUTLER (VH) (H) VORTAC** 115.9 BUM Chan 106 N38°16.32' W94°29.30' 075° 38.5 NM to fld. 890/7E.

VOR unusable:

083°-093° byd 40 NM blo 13,500'

249°-259° byd 40 NM blo 18,000'

295°-305° byd 49 NM



**COLUMBIA RGNL** (COU)(KCOU) 10 SE UTC-6(-5DT) N38°49.06' W92°13.07'

**KANSAS CITY**  
H-5D, L-27B  
IAP, AD

889 B ARFF Index—See Remarks NOTAM FILE COU

**RWY 02-20:** H7401X150 (CONC-GRVD) S-102, D-126, 2D-198

PCR 403 R/D/W/T HIRL

**RWY 02:** MALS. RVR-T

**RWY 20:** REIL. PAPI(P4L)—GA 3.0° TCH 45'.

**RWY 13-31:** H5500X100 (CONC-GRVD) S-101, D-130, 2D-230

PCR 386 R/B/W/T MIRL

**RWY 13:** REIL. PAPI(P4L)—GA 3.0° TCH 45'.

**RWY 31:** REIL. PAPI(P4L)—GA 3.0° TCH 45'.

**LAND AND HOLD—SHORT OPERATIONS**

| LDG RWY | HOLD—SHORT POINT | AVBL LDG DIST |
|---------|------------------|---------------|
| RWY 02  | 13-31            | 6050          |
| RWY 13  | 02-20            | 2714          |

 RWY 13 | 02-20 | 2714 |

**RUNWAY DECLARED DISTANCE INFORMATION**

**RWY 13:** TORA-5500 TODA-5500 ASDA-5500 LDA-5500

**RWY 31:** TORA-5500 TODA-5500 ASDA-5500 LDA-5500

**SERVICE:** S4 FUEL 100LL, JET A OX2 LGT When ATCT clsd actvt

MALS. Rwy 02; REIL Rwy 20; HIRL Rwy 02-20, MIRL Rwy

13-31—CTAF. PAPI Rwy 13 and 31, 20 opr consly.

**AIRPORT REMARKS:** Attended continuously. Class I, ARFF Index B. 48 hrs

PPR for unscheduled air carrier ops with more than 30 passenger

seats, call safety office (573) 817-5063 or (573) 817-5064. ARFF Index C avbl upon request.

**AIRPORT MANAGER:** (573) 817-5064

**WEATHER DATA SOURCES:** ASOS 128.45 (573) 499-1400.

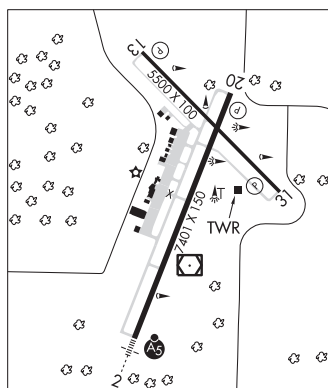
**COMMUNICATIONS:** CTAF 119.3 ATIS 128.45 UNICOM 122.95

RCO 122.6 (COLUMBIA RADIO)

Ⓡ **MIZZO APP/DEP CON** 124.375

**TOWER** 119.3 (1300-0300Z†) **GND CON** 121.6

**CLEARANCE DELIVERY PHONE:** For CD ctc Mizzou Apch at 417-868-5620/5619.



CONTINUED ON NEXT PAGE

## CONTINUED FROM PRECEDING PAGE

AIRSPACE: CLASS D svc 1300-0300Z†; other times CLASS E.

RADIO AIDS TO NAVIGATION: NOTAM FILE COU.

(L) VORW/DME 110.2 COU Chan 39 N38°48.65' W92°13.10' at fld. 883/0E.

VOR unusable:

088°-101°

240°-250° byd 10NM blo 14,900'

251°-280° byd 10NM blo 11,900'

HALLSVILLE (VL) (L) VORTAC 114.2 HLV Chan 89 N39°06.81' W92°07.69' 187° 18.2 NM to fld. 920/6E.

ILS/DME 110.7 I-COU Chan 44 Rwy 02. Class IT.

**COUNTY MEML** (See NEW MADRID on page 260)

**CPT BEN SMITH AIRFIELD/MONROE CITY** (See MONROE CITY on page 256)

**CREVE COEUR** (See ST LOUIS on page 269)

**CUBA MUNI** (UBX)(KUBX) 1 NW UTC-6(-5DT) N38°04.13' W91°25.73'

KANSAS CITY

1023 B NOTAM FILE STL

L-16G

RWY 01-19: H3420X61 (ASPH) S-12.5 MIRL

IAP

RWY 01: REIL. PAPI(P2L)—GA 3.25° TCH 44'.

RWY 19: REIL. PAPI(P2L)—GA 3.0° TCH 44'.

SERVICE: S4 FUEL 100LL LGT ACTVT REIL Rwy 01 and 19; PAPI Rwy 01 and 19; MIRL Rwy 01-19—CTAF.

AIRPORT REMARKS: Attended Sun 1830-2230Z†, Mon-Wed 1430-2230Z†, Fri-Sat 1430-2230Z†. After hrs phone: 573-578-5188. Fuel: self service fuel avbl 24 hrs a day.

AIRPORT MANAGER: 573-885-2479

COMMUNICATIONS: CTAF/UNICOM 122.8 UNICOM unmonitored.

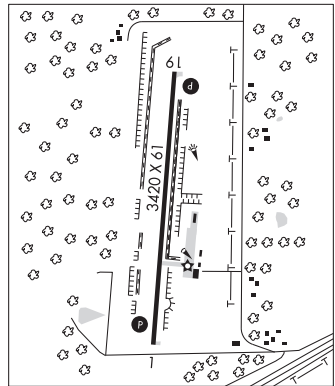
KANSAS CITY CENTER APP/DEP CON 128.35

CLEARANCE DELIVERY PHONE: For CD ctc Kansas City ARTCC at 913-254-8508.

RADIO AIDS TO NAVIGATION: NOTAM FILE VIH.

VICHY (L) (L) VORW/DME 117.7 VIH Chan 124 N38°09.24'

W91°42.41' 105° 14.1 NM to fld. 1105/6E.



## DEARBORN

**TRIPLE R** (ØC1) 2 S UTC-6(-5DT) N39°29.27' W94°46.87'

KANSAS CITY

1007 NOTAM FILE COU

RWY 02-20: H2375X35 (ASPH-TRTD)

SERVICE: S4 FUEL 100LL

AIRPORT REMARKS: Attended irregularly. Call arpt manager to verify attendance. 100LL self svc avbl 24-7. Rwy 02-20 pavement bkn with loose rocks. Rwy 20 thld pavement broken and loose. NSTD rwy safety areas byd each rwy end, terrain grades and insufficient length and width. Rwy 02-20 mkg's faded.

AIRPORT MANAGER: 816-935-9156

COMMUNICATIONS: CTAF/UNICOM 122.7

CLEARANCE DELIVERY PHONE: For CD ctc Kansas City Apmh at 816-329-2710.