

## KAISER/LAKE OZARK

LEE C FINE MEML (AIZ)(KAIZ) 3 SE UTC-6(-5DT) N38°05.76' W92°32.97'

KANSAS CITY  
H-5D, L-16G  
IAP, AD

869 B NOTAM FILE AIZ

RWY 04-22: H6497X100 (ASPH-AFSC) S-89, D-70, 2D-215 MIRL

RWY 04: VASI(V4L)—GA 3.0° TCH 55'.

RWY 22: VASI(V4L)—GA 3.0° TCH 42'.

SERVICE: FUEL 100LL, JET A LGT ACTIVATE VASI Rwy 04 and Rwy 22—CTAF. MIRLs are on photocell.

AIRPORT REMARKS: Attended Oct-Apr 1400-0000Z $\ddagger$ , Attended May-Sep Mon-Wed 1400-0000Z $\ddagger$ , Thu-Sun 1400-0200Z $\ddagger$ . Birds on and invof arpt. Arpt in state park. Rwy 22 turnaround limited to acft weighing only 12,500 lbs or less. Distance remaining markers on southeast side of Rwy 04-22.

AIRPORT MANAGER: 573-348-5251

WEATHER DATA SOURCES: AWOS-3PT 135.325 (573) 348-0847.

COMMUNICATIONS: CTAF/UNICOM 122.8

Ⓜ MIZZOU APP/DEP CON 124.1

CLEARANCE DELIVERY PHONE: For CD ctc Mizzou Apch at 417-868-5620/5619.

RADIO AIDS TO NAVIGATION: NOTAM FILE COU.

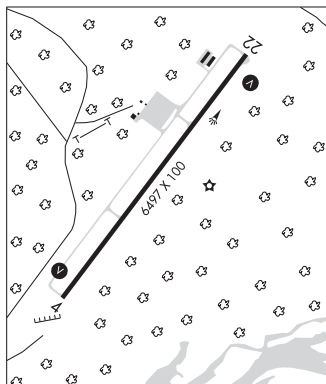
SUNSHINE (VL) (L) VORW/DME 108.4 SHY Chan 21 N38°02.44' W92°36.14' 037° 4.2 NM to fld. 932/OE.

VOR unusable:

110°-230° byd 40 NM

355°-007° byd 40 NM

LOC 111.5 I-AIZ Rwy 22. LOC unmonitored 0100-1300Z $\ddagger$ .



## KANSAS CITY

CHARLES B WHEELER DOWNTOWN (MKC)(KMKC) 0 NW UTC-6(-5DT) N39°07.38' W94°35.57'

KANSAS CITY  
H-5C, L-10J, A  
IAP, AD

757 B LRA Class IV, ARFF Index A NOTAM FILE MKC

RWY 01-19: H6827X150 (CONC-GRVD) S-86, D-171, 2S-175, 2D-342 PCN 67 R/B/W/T HIRL

RWY 01: RLLS. REIL. VASI(V4L)—GA 3.7° TCH 66'. RVR-R Thld dsplcd 299'. Tree.

RWY 19: MALSF. PAPI(P4L)—GA 3.0° TCH 46'. RVR-T Thld dsplcd 302'. Road.

RWY 04-22: H5050X100 (ASPH) S-120, D-204, 2D-303, 2D/2D2-805 PCN 74 F/C/W/T HIRL

RWY 04: VASI(V4L)—GA 3.0° TCH 35'. RVR-T Thld dsplcd 500'. Berm.

RWY 22: REIL. VASI(V4L)—GA 3.3° TCH 35'. RVR-R Thld dsplcd 699'. Railroad.

**RUNWAY DECLARED DISTANCE INFORMATION**

RWY 01: TORA-6827 TODA-6827 ASDA-6827 LDA-6527

RWY 04: TORA-5050 TODA-5050 ASDA-4770 LDA-4270

RWY 19: TORA-6827 TODA-6827 ASDA-6827 LDA-6525

RWY 22: TORA-5050 TODA-5050 ASDA-5050 LDA-4351

**ARRESTING GEAR/SYSTEM**

RWY 01: EMAS

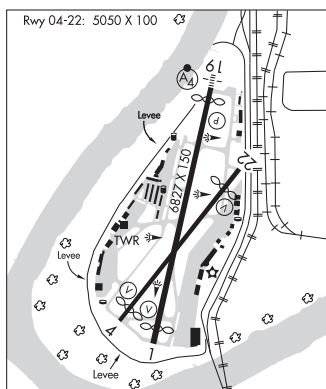
RWY 19: EMAS

SERVICE: S4 FUEL 100LL, JET A OX1, 2, 3, 4 LGT Rwy 22 VGSi unusbl byd 8 degs left of crs. Rwy 19 MALSf augmented with RAIL.

AIRPORT REMARKS: Attended continuously. 100LL self svc avbl 24 hrs with credit card only on west side near general aviation terminal. Wildlife on and invof arpt. Flocks of pigeons invof dep EOR 04. Due to obstns, prior to any turns to the E, acft must be at or abv tfc ptn alt. Arpt CLOSED to air carrier ops with more than 30 passenger seats except 24 hr PPR call arpt manager 816-289-2718. Air carrier ops not authorized in excess of 15 minutes before or after scheduled arrival or departure times without prior coordination with arpt manager confirming ARFF avbl prior to landing or takeoff. Rwy 04-22 VFR E tfc pat: departing Rwy 04 right tfc attain tfc pat alt prior to turning crosswind. Ldg Rwy 22 mnnt tfc pat alt until passing N of Missouri River. Twr has ltd visibility of T-hangar aprons N of Twy D and W of Twy L. CAUTION: Mult obstructions 0.5 mi-1.0 mi ESE fm Rwy 19 DER up to 290 ft AGL/1100 ft MSL. FAA safety video can be accessed on website. Flight Notification Service (ADCUS) avbl.

AIRPORT MANAGER: 816-859-7610

WEATHER DATA SOURCES: ASOS 120.75 (816) 329-2843. LAWRS.



CONTINUED ON NEXT PAGE

CONTINUED FROM PRECEDING PAGE

COMMUNICATIONS: ATIS 120.75 816-329-2850 UNICOM 122.95

Ⓡ KANSAS CITY APP/DEP CON 118.4

TOWER 133.3 GND CON 121.9 CLNC DEL 121.9 PRE-TAXI CLNC 121.9

AIRSPACE: CLASS D.

VOR TEST FACILITY (VOT) 108.6

RADIO AIDS TO NAVIGATION: NOTAM FILE MCI.

KANSAS CITY (H) (H) VORTACW 113.25 MCI Chan 79(Y) N39°17.12' W94°44.22' 140° 11.8 NM to fld, 1017/5E.

NAPOLEON (L) (L) VORTACW 115.15 ANX Chan 98(Y) N39°05.73' W94°07.73' 267° 21.7 NM to fld.

878/7E. NOTAM FILE COU.

TACAN AZIMUTH & DME unusable:

220°-230° byd 35 NM blo 2,000'

VOR unusable:

129°-139°

KENZY NDB (LOM) 344 MK N39°13.25' W94°33.86' 192° 6.0 NM to fld.

ILS/DME 111.75 I-GQR Chan 54(Y) Rwy 04. Glideslope unusable for cpd apchs blw 1,013' MSL.

ILS/DME 109.9 I-MKC Chan 36 Rwy 19. Class IE. LOM KENZY NDB.

COMM/NAV/WEATHER REMARKS: Interference from FM radio station may affect communication in the immediate vicinity of arpt. Freq 121.5 not avbl at twr or FSS.

**KANSAS CITY INTL** (MCI)(KMCI) 15 NW UTC-6(-5DT) N39°17.86' W94°42.83'

**KANSAS CITY**

1027 B LRA Class I, ARFF Index C NOTAM FILE MCI

H-5C, L-10J, A

RWY 01L-19R: H10801X150 (CONC-GRVD) S-120, D-250, 2D-524,

IAP, AD

2D/2D2-450 PCR 1106 R/D/W/T HIRL CL

RWY 01L: MALSR. TDZL. PAPI(P4L)—GA 3.0° TCH 78'. RVR-TMR 0.4% down.

RWY 19R: ALSF2. TDZL. PAPI(P4R)—GA 3.0° TCH 80'. RVR-TMR Rgt tfc. 0.3% up.

RWY 09-27: H9501X150 (ASPH-GRVD) S-120, D-250, 2D-465, 2D/2D2-260 PCR 646 F/B/X/T HIRL

RWY 09: MALSR. RVR-TR

RWY 27: MALSR. PAPI(P4L)—GA 3.0° TCH 72'. RVR-TR Rgt tfc. 0.3% down.

RWY 01R-19L: H9500X150 (CONC-GRVD) S-120, D-250, 2S-175, 2D-550, 2D/2D2-450 PCR 1107 R/B/W/T HIRL CL

RWY 01R: ALSF2. TDZL. PAPI(P4R)—GA 3.0° TCH 74'. RVR-TMR 0.6% up.

**RUNWAY DECLARED DISTANCE INFORMATION**

RWY 01L:TORA-10801 TODA-10801 ASDA-10801 LDA-10801

RWY 01R:TORA-9500 TODA-9500 ASDA-9500 LDA-9500

RWY 09: TORA-9501 TODA-9501 ASDA-9501 LDA-9501

RWY 19L:TORA-9500 TODA-9500 ASDA-9500 LDA-9500

RWY 19R:TORA-10801 TODA-10801 ASDA-10801 LDA-10801

RWY 27: TORA-9501 TODA-9501 ASDA-9501 LDA-9501

SERVICE: FUEL 100LL, JET A

NOISE: Noise abatement procedures in effect 0400-1200Z† with landing on Rwy 01L and 19L; takeoffs on Rwy 01R and 19R.

AIRPORT REMARKS: Attended continuously. Waterfowl on and invof arpt. ASSC in use. Operate transponders with altitude reporting mode and ADS-B (if equipped) enabled on all airport surfaces. Ctl twr has limited visibility on numerous gates at all 3 terminals. Windshear alert system on arpt. When using high-speed exits C4 and C6 cont til first parl twy, then use extreme care when turning in excess of 90 degrees. Design group V and VI acft rqr an arpt escort on Twy D btwn Twys J and Twy C9. Twy B1 btn Twy B and FEDEX apron; cockpit over cntrn steering required. PPR to park at trml gates ctc arpt opn 816-835-4315. No acft parking on postal apron. Military acft may be charged ramp/parking fees. Twy C2 btn Twy C3 and Twy C1 wingspan restriction of 118 ft. Twy B2 clsd to acft wingspan more than 135 ft. Txl W, N1, N3, M1, M3, S1, S3, D1, and D3 wingspan restrictions of 118 ft.

AIRPORT MANAGER: 816-243-5248

WEATHER DATA SOURCES: ASOS (816) 329-2808 LLWAS. TDWR.

COMMUNICATIONS: D-ATIS 128.375 816-329-2725 UNICOM 122.95

RCO 122.5 (COLUMBIA RADIO)

Ⓡ APP CON 120.95

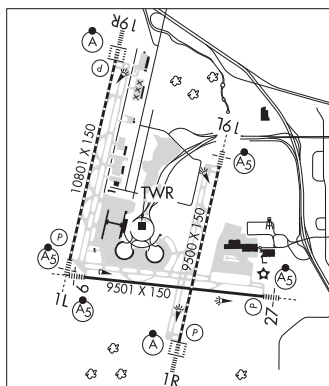
INTERNATIONAL TOWER 128.2 GND CON 121.8 CLNC DEL 135.7

Ⓡ DEP CON 124.7 (191°-009°) 123.95 (010°-190°)

N RAMP CTRL 128.975 S RAMP CTRL 130.825

CPDLC (LOGON KUSA)

PDC



CONTINUED ON NEXT PAGE