

CONTINUED FROM PRECEDING PAGE

COMMUNICATIONS: ATIS 120.75 816-329-2850 UNICOM 122.95

Ⓡ KANSAS CITY APP/DEP CON 118.4

TOWER 133.3 GND CON 121.9 CLNC DEL 121.9 PRE-TAXI CLNC 121.9

AIRSPACE: CLASS D.

VOR TEST FACILITY (VOT) 108.6

RADIO AIDS TO NAVIGATION: NOTAM FILE MCI.

KANSAS CITY (H) (H) VORTACW 113.25 MCI Chan 79(Y) N39°17.12' W94°44.22' 140° 11.8 NM to fld, 1017/5E.

NAPOLEON (L) (L) VORTACW 115.15 ANX Chan 98(Y) N39°05.73' W94°07.73' 267° 21.7 NM to fld.

878/7E. NOTAM FILE COU.

TACAN AZIMUTH & DME unusable:

220°-230° byd 35 NM blo 2,000'

VOR unusable:

129°-139°

KENZY NDB (LOM) 344 MK N39°13.25' W94°33.86' 192° 6.0 NM to fld.

ILS/DME 111.75 I-GQR Chan 54(Y) Rwy 04. Glideslope unusable for cpd apchs blw 1,013' MSL.

ILS/DME 109.9 I-MKC Chan 36 Rwy 19. Class IE. LOM KENZY NDB.

COMM/NAV/WEATHER REMARKS: Interference from FM radio station may affect communication in the immediate vicinity of arpt. Freq 121.5 not avbl at twr or FSS.

KANSAS CITY INTL (MCI)(KMCI) 15 NW UTC-6(-5DT) N39°17.86' W94°42.83'

KANSAS CITY

1027 B LRA Class I, ARFF Index C NOTAM FILE MCI

H-5C, L-10J, A

RWY 01L-19R: H10801X150 (CONC-GRVD) S-120, D-250, 2D-524,

IAP, AD

2D/2D2-450 PCR 1106 R/D/W/T HIRL CL

RWY 01L: MALSR. TDZL. PAPI(P4L)—GA 3.0° TCH 78'. RVR-TMR 0.4% down.

RWY 19R: ALSF2. TDZL. PAPI(P4R)—GA 3.0° TCH 80'. RVR-TMR Rgt tfc. 0.3% up.

RWY 09-27: H9501X150 (ASPH-GRVD) S-120, D-250, 2D-465,

2D/2D2-260 PCR 646 F/B/X/T HIRL

RWY 09: MALSR. RVR-TR

RWY 27: MALSR. PAPI(P4L)—GA 3.0° TCH 72'. RVR-TR Rgt tfc. 0.3% down.

RWY 01R-19L: H9500X150 (CONC-GRVD) S-120, D-250, 2S-175,

2D-550, 2D/2D2-450 PCR 1107 R/B/W/T HIRL CL

RWY 01R: ALSF2. TDZL. PAPI(P4R)—GA 3.0° TCH 74'. RVR-TMR 0.6% up.

RUNWAY DECLARED DISTANCE INFORMATION

RWY 01L:TORA-10801 TODA-10801 ASDA-10801 LDA-10801

RWY 01R:TORA-9500 TODA-9500 ASDA-9500 LDA-9500

RWY 09: TORA-9501 TODA-9501 ASDA-9501 LDA-9501

RWY 19L:TORA-9500 TODA-9500 ASDA-9500 LDA-9500

RWY 19R:TORA-10801 TODA-10801 ASDA-10801 LDA-10801

RWY 27: TORA-9501 TODA-9501 ASDA-9501 LDA-9501

SERVICE: FUEL 100LL, JET A

NOISE: Noise abatement procedures in effect 0400-1200Z† with landing on Rwy 01L and 19L; takeoffs on Rwy 01R and 19R.

AIRPORT REMARKS: Attended continuously. Waterfowl on and invof arpt. ASSC in use. Operate transponders with altitude reporting mode and ADS-B (if equipped) enabled on all airport surfaces. Ctl twr has limited visibility on numerous gates at all 3 terminals. Windshear alert system on arpt. When using high-speed exits C4 and C6 cont til first parl twy, then use extreme care when turning in excess of 90 degrees. Design group V and VI acft rqr an arpt escort on Twy D btwn Twys J and Twy C9. Twy B1 btn Twy B and FEDEX apron; cockpit over cntrn steering required. PPR to park at trml gates ctc arpt opn 816-835-4315. No acft parking on postal apron. Military acft may be charged ramp/parking fees. Twy C2 btn Twy C3 and Twy C1 wingspan restriction of 118 ft. Twy B2 clsd to acft wingspan more than 135 ft. Txl W, N1, N3, M1, M3, S1, S3, D1, and D3 wingspan restrictions of 118 ft.

AIRPORT MANAGER: 816-243-5248

WEATHER DATA SOURCES: ASOS (816) 329-2808 LLWAS. TDWR.

COMMUNICATIONS: D-ATIS 128.375 816-329-2725 UNICOM 122.95

RCO 122.5 (COLUMBIA RADIO)

Ⓡ APP CON 120.95

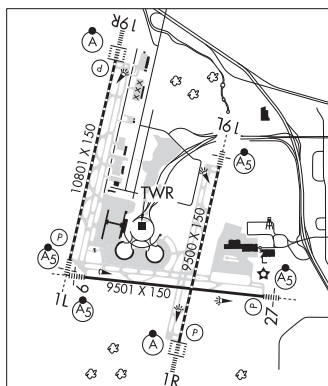
INTERNATIONAL TOWER 128.2 GND CON 121.8 CLNC DEL 135.7

Ⓡ DEP CON 124.7 (191°-009°) 123.95 (010°-190°)

N RAMP CTRL 128.975 S RAMP CTRL 130.825

CPDLC (LOGON KUSA)

PDC



CONTINUED ON NEXT PAGE

CONTINUED FROM PRECEDING PAGE

AIRSPACE: CLASS B See VFR Terminal Area Chart.

RADIO AIDS TO NAVIGATION: NOTAM FILE MCI.

(H) (H) VORTACW 113.25 MCI Chan 79(Y) N39°17.12' W94°44.22' 051° 1.3 NM to fld. 1017/5E.

ILS/DME 110.5 I-DOT Chan 42 Rwy 01L. Class IT.

ILS/DME 110.75 I-PVL Chan 44(Y) Rwy 01R. Class IIIE.

ILS/DME 109.7 I-RNI Chan 34 Rwy 09. Class IB.

ILS/DME 109.55 I-DYH Chan 32(Y) Rwy 19L. Class IE.

ILS/DME 109.1 I-PAJ Chan 28 Rwy 19R. Class IIIE.

ILS/DME 109.7 I-UQY Chan 34 Rwy 27. Class IE.

KENNETT MEML (TKX)(KTKX) 1 SE UTC-6(-5DT) N36°13.55' W90°02.20'

ST LOUIS

262 B NOTAM FILE STL

H-J6, L-16H

RWY 02-20: H5000X75 (CONC) S-30, D-42 MIRL

IAP

RWY 02: REIL. PAPI(P4L)—GA 3.0° TCH 42'. Tree. Rgt tfc.

RWY 20: REIL. PAPI(P4L)—GA 3.0° TCH 42'. Tree.

RWY 18-36: H3012X75 (ASPH) S-10 MIRL

RWY 36: Trees. Rgt tfc.

SERVICE: S4 FUEL 100LL, JET A LGT MIRL Rwy 18-36 and Rwy 02-20 on low ints dusk-0900Z†, to incr ints and ACTIVATE MIRL Rwy 18-36 and Rwy 02-20 and REIL Rwy 02, Rwy 20 from 0500Z†-dawn—CTAF. PAPI Rwy 02 and Rwy 20 on 24 hrs.

AIRPORT REMARKS: Attended Mon-Sat 1400-2300Z†, Sun 1900-2300Z†.

AIRPORT MANAGER: 573-888-5846

WEATHER DATA SOURCES: AWOS-3PT 119.05 (573) 888-9640.

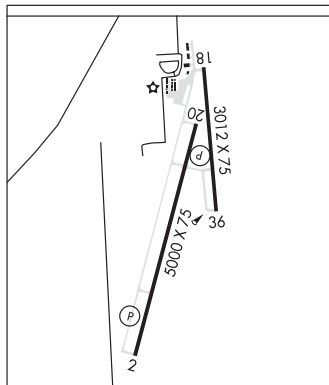
COMMUNICATIONS: CTAF/UNICOM 122.8

Ⓜ MEMPHIS CENTER APP/DEP CON 120.075

CLEARANCE DELIVERY PHONE: For CD ctc Memphis ARTCC at 901-368-8453/8449.

RADIO AIDS TO NAVIGATION: NOTAM FILE STL.

MALDEN (L) TACAN Chan 49 MAW (111.2) N36°33.31' W89°54.69' 194° 20.6 NM to fld. 280/3E.

**KENZY** N39°13.25' W94°33.86' NOTAM FILE MKC.

KANSAS CITY

NDB (LOM) 344 MK 192° 6.0 NM to Charles B Wheeler Downtown.

A

KINGSLEY AIRFIELD (See MILLER on page 255)**KIRKSVILLE RGNL** (IRK)(KIRK) 6 SE UTC-6(-5DT) N40°05.61' W92°32.70'

CHICAGO

966 B Class IV, ARFF Index A NOTAM FILE IRK

H-5B, L-27A

RWY 18-36: H6005X100 (CONC) S-30, D-48, 2D-85

IAP, AD

PCN 10 R/D/W/T HIRL

RWY 18: REIL. VASI(V4L)—GA 3.0° TCH 33'.

RWY 36: MALSR. VASI(V4L)—GA 3.0° TCH 55'.

RWY 09-27: 1370X100 (TURF) 0.4% up E

RWY 09: Trees.

RWY 27: Trees.

RUNWAY DECLARED DISTANCE INFORMATION

RWY 18: TORA-6005 TODA-6005 ASDA-6005 LDA-6005

RWY 36: TORA-6005 TODA-6005 ASDA-6005 LDA-6005

SERVICE: S4 FUEL 100LL, JET A LGT ACTIVATE HIRL Rwy 18-36, VASI Rwy 18 and Rwy 36, REIL Rwy 18, MALSR Rwy 36—CTAF.

AIRPORT REMARKS: Attended 1130-0200Z†. Rwy 09-27 marked with yellow cones. Rwy 09-27 not avbl for scheduled acr opns with more than 9 psgr seats or unscheduled acr at least 31 psgr seats.

AIRPORT MANAGER: 660-665-5020

WEATHER DATA SOURCES: ASOS 121.125 (660) 627-6059.

COMMUNICATIONS: CTAF/UNICOM 122.8

RCO 122.2 (COLUMBIA RADIO)

Ⓜ KANSAS CITY CENTER APP/DEP CON 132.6

CLEARANCE DELIVERY PHONE: For CD if una to ctc on FSS freq, ctc Kansas City ARTCC at 913-254-8508.

AIRSPACE: CLASS E svc 1300-0300Z†; other times CLASS G.

RADIO AIDS TO NAVIGATION: NOTAM FILE IRK.

(H) (H) VORTACW 114.6 IRK Chan 93 N40°08.10' W92°35.50' 133° 3.3 NM to fld. 986/6E.

ILS/DME 111.5 I-IRK Chan 52 Rwy 36. Class IE.

