

**WINTERSET MUNI** (3Y3) 2 N UTC-6(-5DT) N41°21.77' W94°01.27'  
 1116 B TPA—1916(800) NOTAM FILE FOD  
**RWY 14-32:** H3002X50 (ASPH) PCN 6 F/A/X/U MIRL(NSTD)

OMAHA  
 L-121, 27A  
 IAP

0.7% up NW

**RWY 14:** PAPI(P2L)—GA 3.0° TCH 32'. Thld dsplcd 175'. Road.

**RWY 32:** PAPI(P2L)—GA 3.0° TCH 40'. Tree.

**SERVICE:** S4 **FUEL** 100LL, JET A **LGT** ACTIVATE MIRL Rwy 14-32;  
 PAPI Rwy 14 and Rwy 32—CTAF. Rwy 14-32 NSTD MIRL; ends  
 have six thld lgts and all white lenses along rwy length.

**AIRPORT REMARKS:** Attended Mon-Fri 1400-2300Z±, Sat-Sun on call.  
 Ultralight act on and invof arpt. Rwy 32 is calm wind rwy. Inadqtc clnc  
 for hldg on the tarmd at the thld of Rwy 32. Rwy 32 end safety area  
 extds 240', sharp drop at that point.

**AIRPORT MANAGER:** 515-205-9919

**COMMUNICATIONS:** CTAF/UNICOM 122.7

® **DES MOINES APP/DEP CON** 123.9

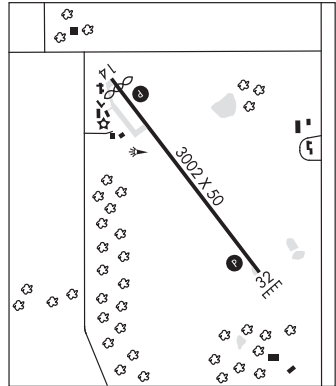
**CLEARANCE DELIVERY PHONE:** For CD ctc Des Moines ATCT at  
 515-974-8016.

**RADIO AIDS TO NAVIGATION:** NOTAM FILE DSM.

**DES MOINES (VH) (H) VORTACW** 117.5 DSM Chan 122

N41°26.26' W93°38.91' 248° 17.4 NM to fld. 951/7E.

VOR unusable:  
 095°-150°



**WOODBINE MUNI** (3Y4) 1 E UTC-6(-5DT) N41°44.17' W95°41.02'  
 1068 NOTAM FILE FOD  
**RWY 17-35:** 2045X95 (TURF) LIRL

OMAHA

**RWY 17:** Thld dsplcd 455'. Road.

**RWY 35:** Thld dsplcd 545'. Road.

**AIRPORT REMARKS:** Unattended. Rwy 17-35 edges marked with yellow cones; dsplcd thlds marked with 3 yellow each side.  
 P-line 165' east of centerline..

**AIRPORT MANAGER:** 402-250-7135

**COMMUNICATIONS:** CTAF 122.9

**CLEARANCE DELIVERY PHONE:** For CD ctc Minneapolis ARTCC at 651-463-5588.

**ZANGGER VINTAGE AIRPARK** (See LARCHWOOD on page 60)