

**ARTHURDALE****TITUS FLD** (7ØD) 2 W UTC-5(-4DT) N39°29.93' W79°51.19'

CINCINNATI

1863 NOTAM FILE EKN

**RWY 09-27:** 2400X50 (TURF) 1.0% up W**RWY 09:** Trees.**RWY 27:** Tree.**AIRPORT REMARKS:** Unattended. Deer on and invof rwy. Ultralights prohibited. 25' trees along edge of rwy. Rwy 27 has 8' dropoff 25' from thld. Rwy 09-27 potentially hazardous sfc variation in rwy safety area. Rwy 09-27 sfc rough, soft when wet.**AIRPORT MANAGER:** 304-864-6996**COMMUNICATIONS:** CTAF 122.9**CLEARANCE DELIVERY PHONE:** For CD ctc Clarksburg Apch at 304-842-2011, when Apch clsd ctc Cleveland ARTCC at 440-774-0226.**BECKLEY****RALEIGH CO MEML** (BKW)(KBKW) 3 E UTC-5(-4DT) N37°47.24' W81°07.45'

CINCINNATI

2504 B ARFF Index—See Remarks NOTAM FILE BKW

H-10G, 12H, L-26I

**RWY 01-19:** H6750X150 (ASPH-GRVD) S-75, D-150, 2S-140,

IAF

2D-200 PCN 38 F/B/W/U HIRL 0.7% up S

**RWY 01:** REIL. PAPI(P4L)—GA 3.0° TCH 40'.**RWY 19:** MALSR. PAPI(P4L)—GA 3.0° TCH 55'.**RWY 10-28:** H5001X100 (ASPH) S-45, D-60 PCN 38 F/B/W/U MIRL

0.3% up E

**RWY 10:** REIL. VASI(V4R)—GA 3.0° TCH 61'.**RWY 28:** REIL. VASI(V4L)—GA 3.75° TCH 66'.**RUNWAY DECLARED DISTANCE INFORMATION****RWY 01:** TORA-6750 TODA-6750 ASDA-6750 LDA-6750**RWY 10:** TORA-5001 TODA-5001 ASDA-5001 LDA-5001**RWY 19:** TORA-6750 TODA-6750 ASDA-6750 LDA-6750**RWY 28:** TORA-5001 TODA-5001 ASDA-5001 LDA-5001**SERVICE:** S4 **FUEL** 100LL, JET A **LGT** Actvt MALSR Rwy 19; REIL Rwy 01, 10, and 28; VASI Rwy 10 and 28; MIRL Rwy 10-28; HIRL Rwy 01-19; twy lgts—CTAF. PAPI Rwy 01 and 19 set at medium, ctc UNICOM to change instst. Rwy 28 VGSJ and descent angles not coincident.**AIRPORT REMARKS:** Attended continuously. Deer, birds and wild turkeys on and invof arpt. All sfc work in prog, grass cutting Apr thru Oct. Class I, ARFF Index B. PPR 24 hrs for unsked acr opns with more than 30 psgr seats; call amgr 304-255-0476. Index B coverage is prvdd.**AIRPORT MANAGER:** 304-255-0476**WEATHER DATA SOURCES:** ASOS 121.55 (304) 253-5214.**COMMUNICATIONS:** CTAF/UNICOM 123.0

Ⓡ CHARLESTON APP/DEP CON 125.4

**AIRSPACE:** CLASS E.**RADIO AIDS TO NAVIGATION:** NOTAM FILE BKW.**BECKLEY (H) (DH) VORW/DME** 117.7 BKW Chan 124 N37°46.82' W81°07.41' at fld. 2517/6W.

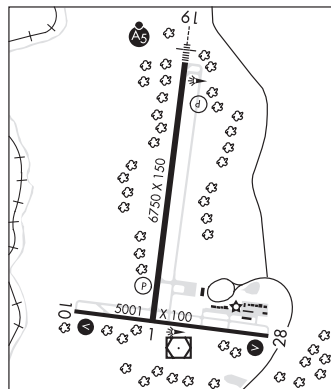
DME unusable:

080°-215° byd 15 NM

VOR unusable:

070°-200°

ILS 111.7 I-MQU Rwy 19. Class IB.

**BECKLEY** N37°46.82' W81°07.41' NOTAM FILE BKW.

CINCINNATI

**(H) (DH) VORW/DME** 117.7 BKW Chan 124 at Raleigh Co Meml. 2517/6W.

H-10G, 12H, L-26I

DME unusable:

080°-215° byd 15 NM

VOR unusable:

070°-200°