

ASTORIA RGNL (AST)(KAST) P (CG) 3 SW UTC-8(-7DT) N46°09.48' W123°52.72'

SEATTLE
H-1B, L-1C
IAP

15 B NOTAM FILE AST

RWY 08-26: H5794X100 (ASPH) S-60, D-76, 2S-97, 2D-119 MIRL

RWY 08: REIL. VASI(V4L)—GA 3.0° TCH 38'. Thld dspcd 300'. Tree.

RWY 26: MALSR. Thld dspcd 713'. Fence.

RWY 14-32: H4467X100 (ASPH) S-60, D-76, 2D-119 MIRL

RWY 14: REIL. VASI(V4L)—GA 3.0° TCH 55'. Berm.

RWY 32: PAPI(P4L)—GA 4.0° TCH 61'.

RUNWAY DECLARED DISTANCE INFORMATION

RWY 08: TORA-5794 TODA-5794 ASDA-5194 LDA-4894

RWY 14: TORA-4467 TODA-4467 ASDA-4467 LDA-4467

RWY 26: TORA-5794 TODA-5794 ASDA-5494 LDA-4780

RWY 32: TORA-4467 TODA-4467 ASDA-4467 LDA-4467

SERVICE: S3 **FUEL** 100LL, JET A **LGT** ACTVT MIRL Rwy 08-26 and

Rwy 14-32, MALSR Rwy 26 and REIL Rwy 08—CTAF. **MILITARY**— JASU

1(MD-3) **FUEL** A+ (avbl 1600-0100Z±, C503-861-1222. OT

C503-298-7531, \$50 fee.NC-100LL, A) **FLUID** SP

AIRPORT REMARKS: Attended 1600-0100Z±. Migratory flocks of waterfowl

on and invof arpt. High concentration helicopter opr in area. For fuel

outside nml working hrs ctc 503-298-7531. Fuel: 100LL: min 24 hr

PPR exc CG msn. Ltd fuel avbl for CG msns and mil emerg. Mil fuel avbl

on gen AVN/FBO ramp, US govt aircard acptd. Ctc Astoria Maint Ctl

171.35 15 min prior to entering CG ramp. C503-861-6288. Rwy 14-32 has basic markings with side stripes.

AIRPORT MANAGER: 503-298-0909

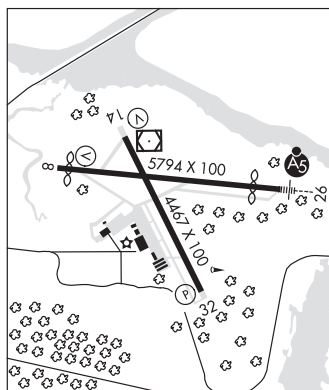
WEATHER DATA SOURCES: ASOS 135.375 (503) 861-1371.

COMMUNICATIONS: CTAF/UNICOM 122.8

RCO 122.3 (MC MINNVILLE RADIO)

® SEATTLE CENTER APP/DEP CON 124.2

CLEARANCE DELIVERY PHONE: For CD if una to ctc on FSS freq, ctc Seattle ARTCC at 253-351-3694.



CONTINUED ON NEXT PAGE

CONTINUED FROM PRECEDING PAGE

AIRSPACE: CLASS E.

RADIO AIDS TO NAVIGATION: NOTAM FILE AST.

(VL) (L) VOR/DME 114.0 AST Chan 87 N46°09.70' W123°52.82' at fld. 11/15E.

VOR unusable:

000°-018° byd 40 NM
 019°-029° byd 40 NM blo 5,500'
 019°-029° byd 57 NM
 023°-034° byd 35 NM blo 5,500'
 030°-050° byd 40 NM
 034°-049° byd 30 NM blo 5,500'
 049°-059° byd 30 NM blo 7,500'
 051°-061° byd 40 NM blo 9,500'
 051°-061° byd 55 NM
 062°-077° byd 40 NM
 078°-088° byd 40 NM blo 8,500'
 078°-088° byd 62 NM
 084°-104° byd 34 NM blo 6,000'
 089°-104° byd 40 NM blo 8,500'
 089°-104° byd 64 NM
 105°-121° byd 40 NM
 122°-132° byd 40 NM
 122°-132° byd 67 NM
 124°-154° byd 33 NM blo 7,000'
 133°-164° byd 40 NM
 154°-174° byd 36 NM blo 7,000'
 165°-175° byd 40 NM blo 10,000'
 165°-175° byd 56 NM

DME unusable:

079°-092° byd 35 NM blo 7,000'
 334°-004° byd 28 NM blo 6,300'

VOR unusable:

174°-204° byd 15 NM blo 8,000'
 176°-305° byd 40 NM
 184°-214° byd 10 NM blo 3,300'
 184°-244° byd 5 NM blo 2,000'
 204°-214° byd 20 NM blo 8,000'
 214°-244° byd 30 NM blo 6,000'
 244°-324° byd 12 NM blo 2,000'
 244°-324° byd 25 NM blo 5,000'
 324°-334° byd 30 NM blo 5,500'
 327°-337° byd 40 NM blo 7,100'
 327°-337° byd 53 NM
 334°-004° byd 20 NM blo 5,500'
 338°-359° byd 40 NM

ILS 109.5 I-AST Rwy 26. Class IE. ILS monitored by zse consly.