

NEW ROADS

FALSE RIVER RGNL (HZR)(KHZR) 2 NW UTC-6(-5DT) N30°43.10' W91°28.72'

HOUSTON

H-7D, L-21B, 22F

IAP

39 B TPA—See Remarks NOTAM FILE DRI

RWY 18-36: H5003X75 (ASPH) S-30 MIRL

RWY 18: REIL. PAPI(P2L)—GA 3.0° TCH 50'.

RWY 36: ODALS. PAPI(P2L)—GA 3.0° TCH 50'.

SERVICE: **FUEL** 100LL **LGT** ACTIVATE REIL Rwy 18—122.8. MIRL Rwy 18-36; ODALS Rwy 36 preset low ints, to incr ints—122.8 Dual lighting system ops in effect due to testing of LED MIRL and twy lgts indef.

AIRPORT REMARKS: Attended Mon-Fri 1400-2200Z†. For attendant after hrs call 225-978-8367. Fuel avbl 24 hrs self svc with credit card. TPA—299 (260) ultralight, 499 (460) helicopter, 999 (960) fixed wing within 3 NM of arpt. Rwy 18-36 surface condition not reported 0300-1900Z† Mon-Fri and 1100-1059Z† on weekends and holidays.

AIRPORT MANAGER: 225-638-3192

WEATHER DATA SOURCES: AWOS-3PT 121.250 (225) 638-3107.

COMMUNICATIONS: CTAF/UNICOM 122.8

Ⓡ **BATON ROUGE APP/DEP CON** 120.3 (1100-0600Z†)

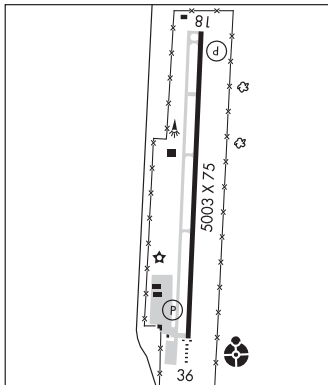
Ⓡ **HOUSTON CENTER APP/DEP CON** 126.35 (0600-1100Z†)

CLEARANCE DELIVERY PHONE: For CD ctc Houston ARTCC at 281-230-5622.

RADIO AIDS TO NAVIGATION: NOTAM FILE BTR.

FIGHTING TIGER (VL) (L) VORTACW 116.5 LSU Chan 112 N30°29.11' W91°17.64' 320° 16.9 NM to fld. 20/6E.

LOC/DME 111.9 I-HZR Chan 56 Rwy 36.



OAK GROVE

KELLY-DUMAS (9M6) 1 SW UTC-6(-5DT) N32°50.86' W91°24.24'

MEMPHIS

L-18F

112 B NOTAM FILE DRI

RWY 18-36: H3799X75 (ASPH) S-10 MIRL

RWY 18: REIL. PAPI(P2L)—GA 3.5° TCH 52'. Thld dspclcd 250'.

Trees.

RWY 36: REIL. PAPI(P2L)—GA 3.0° TCH 53'. Trees.

SERVICE: S4 **FUEL** 100LL, JET A **LGT** MIRL Rwy 18-36, REIL Rwy 18 and Rwy 36 preset low instst dusk-dawn; to incr instst ACTVT—CTAF. PAPI Rwy 18 and Rwy 36 dusk-dawn—CTAF.

AIRPORT REMARKS: Attended Mon-Fri 1330-2300Z†. Fuel avbl 24 hrs with credit card.

AIRPORT MANAGER: 318-428-3129

COMMUNICATIONS: CTAF 122.9

CLEARANCE DELIVERY PHONE: For CD ctc Memphis ARTCC at 901-368-8453/8449.

RADIO AIDS TO NAVIGATION: NOTAM FILE MLU.

MONROE (VL) (L) VORTACW 117.2 MLU Chan 119 N32°31.01' W92°02.16' 055° 37.6 NM to fld. 77/3E.

VOR unusable:

010°-040° byd 40 NM

125°-135° byd 40 NM

215°-231° byd 40 NM

232°-242° byd 40 NM blo 8,000'

232°-242° byd 83 NM

243°-255° byd 40 NM blo 7,000'

243°-255° byd 56 NM

256°-267° byd 40 NM blo 18,000'

256°-267° byd 45 NM

268°-271° byd 40 NM

272°-282° byd 40 NM blo 2,000'

272°-282° byd 51 NM

283°-315° byd 40 NM

345°-355° byd 40 NM

DME unusable:

097°-131° blo 3,000'

097°-131° byd 20 NM

TACAN AZIMUTH unusable:

097°-131° blo 3,000'

097°-131° byd 20 NM

