

**JACKSON—MEDGAR WILEY EVERS INTL** (JAN)(KJAN) P (ANG) 5 E UTC-6(-5DT) N32°18.67' W90°04.55'

**MEMPHIS**  
H-6J, L-18G  
IAP, DIAP, AD

346 B LRA Class I, ARFF Index C NOTAM FILE JAN MON Airport

**RWY 16L-34R:** H8500X150 (ASPH-GRVD) S-75, D-200, 2S-175, 2T-585, 2D-390, 2D/2D2-850 PCN 88 F/C/W/T HIRL CL  
**RWY 16L:** ALSF2. TDZL. PAPI(P4L)—GA 3.0° TCH 71'. RVR-TMR Trees. 0.3% up.

**RWY 34R:** REIL. PAPI(P4R)—GA 3.0° TCH 66'. RVR-TMR Trees. 0.7% down.

**RWY 16R-34L:** H8500X150 (ASPH-GRVD) S-130, D-140, 2S-175, 2T-585, 2D-250, 2D/2D2-720 PCN 59 F/B/X/U HIRL CL

**RWY 16R:** REIL. PAPI(P4L)—GA 3.0° TCH 80'. RVR-R 0.4% up.

**RWY 34L:** MALSR. TDZL. RVR-T Trees.

**SERVICE:** S4 FUEL 100LL, JET A, A+ OX 1, 2, 3, 4 LGT When twr clsd actvt MALSR Rwy 34L; REIL Rwy 16R and 34R; HIRL Rwy 16L-34R and 16R-34L—CTAF. Rwy 16L ALSF-2 preset on med instst exc SFL not avbl. **MILITARY—JASU** 8(A/M32A-86D) 3(MC-1A) FUEL A+, A (C601-939-9366) (NC-100LL)

**AIRPORT REMARKS:** Attended continuously. Wt brg cpty for Rwsy 16L-34R and Rwy 16R-34L are TRT-585 to accommodate C-17 acft. Be alert when xng AER 16R. Hold area 1 and 2 crmsnd on term apron btn Twy B3 and Twy B5. Ldg fee for non-coml acft over 25500 lbs, fee waived for lrg non-sked acft with suf fuel purchase.

**MILITARY REMARKS:** See FLIP AP/1 supplementary arpt remark. Mil acft use Twy C7 to acce the FBO apron unless otrw drctd by ATC. **CAUTION** Bash Phase II period Jul-Oct. Ctc afld mgmt or Comd Post for current bird watch con. **ANG** Offl bus. All tran acft 48 hr PPR. Ltd prk use. Ctc afld mgmt. Tran acft use FBO for svc. Afld mgmt opr 1300-0230Z† wk, DSN 828-8372, C601-405-8372. Comd Post opr 1200-0630Z† wk, DSN 828-8350, C601-405-8350. Afld mgmt and comd post have ltd consec stor. Top secret stor unavbl. BASH Phase II in efct 1 Jul-31 Oct. Ctc twr, command post or AFM for bird haz. Wildlife most actvt +/- 1 hr of SS and SR. ARFF sts rcded level of svc (RLS). MDT risk for mil acft Cat 4, 5, 6, 7, 8, and 9. Sev risk for mil acft Cat 10.

**AIRPORT MANAGER:** 601-939-5631

**WEATHER DATA SOURCES:** ASOS 121.05 (601) 932-2822. LLWAS.

**COMMUNICATIONS:** CTAF 120.9 ATIS 121.05 UNICOM 122.95

RCO 122.2 (GREENWOOD RADIO)

Ⓡ APP/DEP CON 123.9 317.7 (333°-152°) 125.25 319.2 (153°-332°)(1200-0500Z†)

Ⓡ MEMPHIS CENTER APP/DEP CON 132.5 259.1 (0500-1200Z†)

TOWER 120.9 352.0 (1200-0500Z†) GND CON 121.7 348.6

ANG COMD POST 264.6 (172nd AW CP)

**CLEARANCE DELIVERY PHONE:** For CD ctc Memphis ARTCC at 901-368-8453/8449.

**AIRSPACE:** CLASS C svc ctc APP CON svc 1200-0500Z†; other times CLASS E.

**VOR TEST FACILITY (VOT)** 111.0

**RADIO AIDS TO NAVIGATION:** NOTAM FILE GWO.

**MAGNOLIA (VH) (H) VORTACW** 113.2 MHZ Chan 79 N32°26.04' W90°05.99' 172° 7.5 NM to fld. 407/1W.

TACAN AZIMUTH unusable:

240°-275° byd 30 NM blo 2,000'

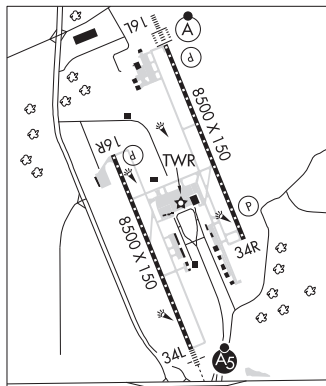
DME unsbl 240-275 byd 30 NM blo 2000'

**ALLEN NDB (LOMW)** 365 JA N32°24.75' W90°07.17' 161° 6.5 NM to fld. 330/1W. NOTAM FILE JAN.

**ILS** 110.5 I-JAN Rwy 16L. Class IIIE. LOM ALLEN NDB. Unmonitored 0500-1200Z†. Radar - See Terminal Flip for Radar Minima.

**ILS** 109.3 I-FRL Rwy 34L. Class IB. Unmonitored. Localizer restricted byd 25° left and right of course.

ASR (1200-0500Z†)



**JAMES H EASOM FLD** (See NEWTON on page 166)

**JOE WILLIAMS NOLF** (NJW)(KNJW) N UTC-6(-5DT) N32°47.94' W88°50.07'

**AIRSPACE:** CLASS D svc 1400Z†-2200Z† Mon-Fri; other times CLASS G..

ASR (1200-0500Z†)

**MEMPHIS**  
H-6J, L-18G