

DELL CITY MUNI (2E5) 2 N UTC-7(-6DT) N31°56.86' W105°11.51'
 3703 B NOTAM FILE ABQ
RWY 08-26: H4685X55 (ASPH) S-12.5 RWY LGTS(NSTD)

EL PASO
 L-6F

RWY 08: Road.
RWY 26: Thld dsplcd 400'. Road.

SERVICE: LGT Solar lights-nstd colors. Rwy width 35 ft at night.

AIRPORT REMARKS: Unattended. Rwy 26 dsplcd thld bar not painted, dsplcd thld not lighted. Rwy 08-26 potholes, loose asph and stones.

AIRPORT MANAGER: 915-964-2344

COMMUNICATIONS: CTAF 122.9

CLEARANCE DELIVERY PHONE: For CD ctc Albuquerque ARTCC at 505-856-4861.

RADIO AIDS TO NAVIGATION: NOTAM FILE ABQ.

SALT FLAT (VL) (H) VORTACW 113.5 SFL Chan 82 N31°44.89' W105°05.21' 324° 13.1 NM to fld. 3730/12E.
 VOR unusable:

- 020°-044° byd 27 NM blo 15,000'
- 045°-067° byd 40 NM
- 068°-078° byd 47 NM blo 10,000'
- 079°-095° byd 40 NM
- 096°-106° byd 57 NM blo 9,000'
- 129°-139° byd 58 NM blo 11,000'
- 140°-150° byd 40 NM
- 151°-160° byd 61 NM blo 15,000'
- 260°-300° byd 40 NM
- 345°-019° byd 40 NM

TACAN AZIMUTH unusable:

- 020°-080° byd 25 NM blo 16,000'
- 065°-075° byd 25 NM
- 180°-190° byd 31 NM blo 9,500'
- 285°-290° byd 39 NM

DME unusable:

- 020°-080° byd 25 NM blo 16,000'
- 065°-075° byd 25 NM
- 180°-190° byd 31 NM blo 9,500'
- 285°-290° byd 39 NM

DENISON N33°49.59' W96°40.13' NOTAM FILE GYI.
NDB (MHW) 341 DNI 179° 6.7 NM to North Texas Rgnl/Perrin Fld. 642/3E.

DALLAS-FT. WORTH
 L-17C

DENTON ENTERPRISE (DTO)(KDTO) 3 W UTC-6(-5DT) N33°12.12' W97°11.95'
 643 B TPA-1443(800) NOTAM FILE DTO
RWY 18L-36R: H7002X150 (ASPH) S-70, D-100 MIRL

DALLAS-FT WORTH
 COPTER
 H-6H, L-17C, A
 IAP, AD

RWY 18L: MALSR. PAPI(P4L)-GA 3.0° TCH 54'.
RWY 36R: PAPI(P4L)-GA 3.0° TCH 50'. Thld dsplcd 100'. Trees.
RWY 18R-36L: H5003X75 (ASPH) S-30 MIRL 0.3% up N
RWY 18R: PAPI(P4L)-GA 3.0° TCH 42'.
RWY 36L: PAPI(P4L)-GA 3.0° TCH 42'.

RUNWAY DECLARED DISTANCE INFORMATION

RWY 18L:TORA-7002 TODA-7002 ASDA-6502 LDA-6502
RWY 36R:TORA-7002 TODA-7002 ASDA-6602 LDA-6502

SERVICE: S4 FUEL 100LL, JET A LGT Dusk-dawn when ATCT clsd,
 MIRL Rwy 18L-36R and 18R-38L preset to low instst; to incr instst
 and ACTVT MALSR Rwy 18-CTAF.

AIRPORT REMARKS: Attended 1200-0400Z±. Arpt closed to ultralights and
 gliders. Mowing opns on arpt May-Sept. Rwy 18L designated as a
 calm wind rwy.

AIRPORT MANAGER: 940-349-7736

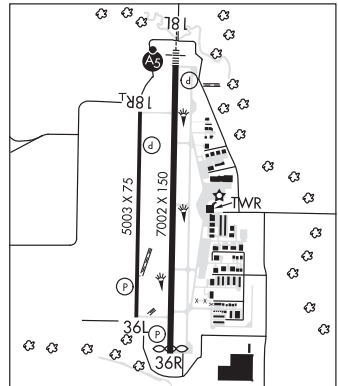
WEATHER DATA SOURCES: ASOS 119.325 (940) 383-8457.

COMMUNICATIONS: CTAF 119.95 ATIS 119.325 UNICOM 122.95

Ⓡ LONE STAR APP/DEP CON 118.1

TOWER 119.95 (1200-0400Z±) GND CON 123.95 CLNC DEL 123.95
CLEARANCE DELIVERY PHONE: For CD when ATCT is clsd ctc Regional Apch
 at 972-615-2799.

AIRSPACE: CLASS D svc 1200-0400Z±; other times CLASS G.



CONTINUED ON NEXT PAGE

RADIO AIDS TO NAVIGATION: NOTAM FILE FTW.

RANGER (VH) (H) VORTACW 115.7 FUZ Chan 104 N32°53.37' W97°10.77' 351° 18.7 NM to fld. 639/6E.

VOR unusable:

275°-290° byd 40 NM

317°-327° byd 40 NM

PINCK NDB (LOMW) 257 DT N33°16.99' W97°11.78' 178° 4.9 NM to fld. 739/4E. NOTAM FILE DTO.

ILS 109.1 I-DTO Rwy 18L. Class IT. LOM PINCK NDB. LOC unusable byd 10° left of course.

DENVER CITY (E57) 1 NW UTC-6(-5DT) N32°58.48' W102°50.71'

ALBUQUERQUE

3575 B NOTAM FILE FTW

H-6G, L-6H

RWY 04-22: H5780X50 (ASPH) S-13 MIRL

RWY 04: PAPI(P2L)—GA 4.5° TCH 64'. Thld dspcd 350'. Road.

RWY 22: PAPI(P2L)—GA 4.0° TCH 43'. Thld dspcd 155'. Fence. Rgt tfc.

RWY 08-26: H3960X45 (ASPH) S-13

RWY 08: Thld dspcd 179'. P-line.

RWY 26: Thld dspcd 526'. P-line. Rgt tfc.

SERVICE: FUEL 100LL, JET A

AIRPORT REMARKS: Attended irregularly. Fuel 100LL self-serve. Lgtd drilling rigs on and invof arpt. Rwy 26, entrance road and 20' hangars inside prim sfc.

AIRPORT MANAGER: 806-592-5426

WEATHER DATA SOURCES: AWOS-3PT 118.275 (806) 592-3681.

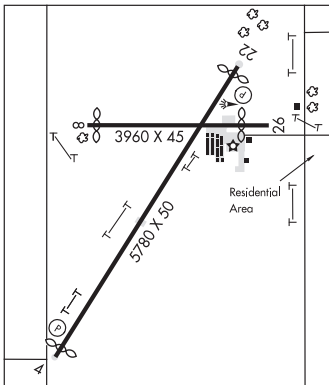
COMMUNICATIONS: CTAF/UNICOM 122.8

CLEARANCE DELIVERY PHONE: For CD ctc Fort Worth ARTCC at 817-858-7584.

RADIO AIDS TO NAVIGATION: NOTAM FILE HOB.

HOBBS (L) (L) VORTACW 111.0 HOB Chan 47 N32°38.29'

W103°16.16' 036° 29.4 NM to fld. 3664/11E.



DEPOO N25°59.02' W97°30.55' NOTAM FILE BRO.

BROWNSVILLE

NDB (LOMW) 393 BR 133° 6.5 NM to Brownsville/South Padre Island Intl. 29/3E.

DESOTO

COLONEL BOBBY WADDLE/DESOTO HELIPORT (73T) 3 N UTC-6(-5DT) N32°37.90'

DALLAS-FT WORTH

W96°51.31'

COPTER

649 B NOTAM FILE FTW

HELIPAD H1: H54X54 (CONC) RWY LGTS(NSTD)

SERVICE: S4 FUEL 100LL, JET A LGT Photo cell SS-SR. Lgts with recessed lgts srndg Indg pads.

HELIPORT REMARKS: Attended Mon-Fri 1500-0000Z. Self-serve fuel. Helipad H1 ingress/egress north and south. 1024 ft

MSL (310 ft AGL) twr, 310 deg .73 mile from helipad. Inside KRBD Class D sfc area, ctc Dallas Exec twr 127.25.

AIRPORT MANAGER: 214-379-6790

COMMUNICATIONS: CTAF 122.9

CLEARANCE DELIVERY PHONE: For CD ctc Regional Apch at 972-615-2799.