

## EDNA

**JACKSON CO** (26R) 3 NE UTC-6(-5DT) N29°00.06' W96°34.92'

62 B NOTAM FILE CXO

**RWY 15-33:** H3393X70 (ASPH) S-12.5 MIRL

**RWY 15:** P-line.

**SERVICE:** S4 **FUEL** 100LL **LGT** MIRL Rwy 15-33 preset to low. To incr instnt and ACTVT—CTAF.

**AIRPORT REMARKS:** Unattended. 100LL avbl 24 hrs, self-serve. Twy has reflectors on pavement. To mnt aerobatic box—123.3. Hvy intrnt ftc on wkends. NOTE: See Special Notices—Aerobatic Practice Area.

**AIRPORT MANAGER:** 361-652-4163

**COMMUNICATIONS:** CTAF/UNICOM 122.8

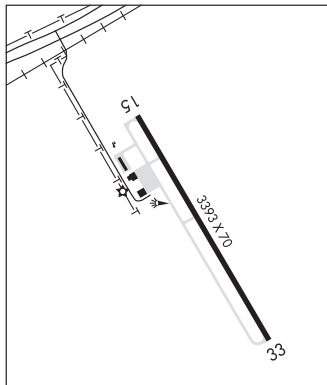
Ⓡ **HOUSTON CENTER APP/DEP CON** 135.05

**CLEARANCE DELIVERY PHONE:** For CD ctc Houston ARTCC at 281-230-5622.

**RADIO AIDS TO NAVIGATION:** NOTAM FILE PSX.

**PALACIOS (VH) (H) VORTACW** 117.3 PSX Chan 120 N28°45.87' W96°18.37' 306° 20.3 NM to fld. 16/8E.

**HOUSTON**  
L-19D, 21A  
IAP



**EDWARDS CO** (See ROCKSPRINGS on page 414)

**EL PASO INTL** (ELP)(KELP) 4 NE UTC-7(-6DT) N31°48.44' W106°22.58'

3962 B TPA—See Remarks AOE Class I, ARFF Index C NOTAM FILE ELP

**RWY 04-22:** H12020X150 (ASPH-CONC-GRVD) S-100, D-180,

2D-350 PCN 70 R/B/X/T HIRL

**RWY 04:** REIL. PAPI(P4L)—GA 3.0° TCH 55'. RVR-TR

**RWY 22:** MALSR. PAPI(P4R)—GA 3.0° TCH 70'. RVR-TR Rgt ftc. 0.3% down.

**RWY 08R-26L:** H9025X150 (ASPH-CONC-GRVD) S-100, D-180,

2S-175, 2D-350 PCN 75 F/B/W/T HIRL

**RWY 08R:** REIL. PAPI(P4L)—GA 3.0° TCH 75'. Rgt ftc. 0.5% up.

**RWY 26L:** MALSR. PAPI(P4R)—GA 3.0° TCH 75'. 0.3% down.

**RWY 08L-26R:** H5499X75 (CONC-GRVD) S-60, D-180, 2S-175

PCN 10 R/C/W/T MIRL

**RWY 26R:** Rgt ftc.

**RUNWAY DECLARED DISTANCE INFORMATION**

**RWY 04:** TORA-12020 TODA-12020 ASDA-12020 LDA-12020

**RWY 08L:** TORA-5499 TODA-5499 ASDA-5499 LDA-5499

**RWY 08R:** TORA-9025 TODA-9025 ASDA-9025 LDA-9025

**RWY 22:** TORA-12020 TODA-12020 ASDA-12020 LDA-12020

**RWY 26L:** TORA-9025 TODA-9025 ASDA-9025 LDA-9025

**RWY 26R:** TORA-5499 TODA-5499 ASDA-5499 LDA-5499

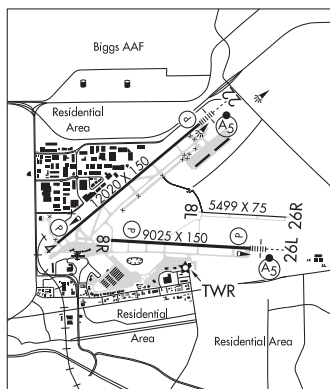
**SERVICE:** S4 **FUEL** 100LL, JET A1+ **OX** 2, 4

**NOISE:** Military users should review noise abatement procedures listed for Biggs AAF. Noise abatement procedures in effect, ctc tower for details.

**AIRPORT REMARKS:** Attended continuously. TPA small acft 5000 (1038); turbojet 5504 (1542); overhead apch 6004 (2042).

Rwy 08L-26R not avbl for air carrier ops with more than 9 passenger seats. 24 hour PPR class A explosives ctc 915-212-0333. Biggs AAF 2 NM northwest Rwy 22 can be mistaken for ELP Rwy 22. Engine power is rstd to idle power on one engine at a time for maximum 5 min on any terminal or parking aprons. Holding position markings for Rwy 08R apch and Rwy 04-22 are in close proximity to the terminal apron, review arpt diagram prior to pushback from the gate. Rwy 04-22, 206' conc, 10,814' asph, 1,000' conc. Rwy 08R-26L, 7,780' asph, 1,247' conc. Twy A south of apch end of Rwy 4; Twy J NE of Twy K1; Twy K NE of Twy K1 btn Twy J and north cargo ramp; Twys U and Twy V south of Twy L; and Twy K2 not visible from ATCT. North bound ftc prohibited on Twy F south of AER 08R. Compass rose clsd permly. Cross-bleed starts or other pre-dep activity on movement areas only. Maintenance or other requirements needing longer or higher power ctc tower for directions to designated runup areas. NOTE: See Special Notices—Arrival Alert.

**EL PASO**  
H-4L, L-6F  
IAP, AD



CONTINUED ON NEXT PAGE

## CONTINUED FROM PRECEDING PAGE

AIRPORT MANAGER: 915-212-0333

WEATHER DATA SOURCES: ASOS (915) 774-9497 LLWAS, WSP.

COMMUNICATIONS: D-ATIS 120.0 (915) 774-9415 UNICOM 122.95

RCO 122.6 (ALBUQUERQUE RADIO)

Ⓡ APP CON 124.25 (North-V16) 119.15 (South-V16)

TOWER 118.3 GND CON 121.9 CLNC DEL 125.0

Ⓡ DEP CON 119.15

PDC

AIRSPACE: CLASS C svc ctc APP CON.

VOR TEST FACILITY (VOT) 111.0

RADIO AIDS TO NAVIGATION: NOTAM FILE ELP.

(VH) (H) VORTACW 115.2 ELP Chan 99 N31°48.95' W106°16.91' 252° 4.9 NM to fld. 4023/12E.

DME unusable:

260°-270° byd 30 NM blo 11,000'

270°-310° byd 30 NM blo 10,000'

VOR unusable:

031°-075° byd 40 NM

076°-099° byd 40 NM blo 18,000'

100°-103° byd 40 NM

258°-268° byd 40 NM blo 18,000'

269°-294° byd 40 NM

295°-305° byd 40 NM blo 18,000'

295°-305° byd 48 NM blo 20,000'

306°-309° byd 40 NM

310°-070° byd 25 NM blo 12,000'

314°-329° byd 40 NM

LOC/DME 111.5 I-ETF Chan 52 Rwy 04. DME also serves Rwy 22. LOC unusable byd 24° left of course. LOC unusable byd 30° right of course.

ILS/DME 111.5 I-ELP Chan 52 Rwy 22. Class IE. DME also serves Rwy 4. DME unusable byd 16 NM restricted area R-5103A. LOC unusable byd 16 NM restricted area R-5103A.

ASR

ELDORADO (27R) 1 W UTC-6(-5DT) N30°51.73' W100°36.65'

SAN ANTONIO

2448 B NOTAM FILE SJT

L-19B

RWY 17-35: H4300X60 (ASPH) S-12.5 MIRL

RWY 17: PAPI(P2L)—GA 3.0° TCH 40'. Pole. Rgt t/c.

RWY 35: PAPI(P2L)—GA 3.0° TCH 40'. Road.

SERVICE: FUEL 100LL LGT MIRL Rwy 17-35 preset to low instst, to increase instst and ACTIVATE PAPI Rwy 17-35—CTAF.

AIRPORT REMARKS: Unattended. 100LL: for fuel call 325-853-2036/2737 or 325-650-9553.

AIRPORT MANAGER: (325) 853-2593

COMMUNICATIONS: CTAF/UNICOM 123.0

CLEARANCE DELIVERY PHONE: For CD ctc San Angelo Apch at 432-563-2123. When Apch clsd ctc Fort Worth ARTCC at 817-858-7584.

RADIO AIDS TO NAVIGATION: NOTAM FILE SJT.

SAN ANGELO (VH) (H) VORTACW 115.1 SJT Chan 98 N31°22.50' W100°27.29' 185° 31.7 NM to fld. 1886/10E.

VOR unusable:

111°-190° byd 40 NM

120°-178° byd 24 NM blo 4,500'

191°-201° byd 49 NM

202°-267° byd 40 NM

268°-289° byd 7 NM

290°-314° byd 46 NM

315°-352° byd 40 NM

TACAN AZIMUTH unusable:

120°-178° byd 18 NM

ELLINGTON (See HOUSTON on page 342)