

## PANAMA CITY

**NORTHWEST FLORIDA BEACHES INTL** (ECP)(KECP) 16 NW UTC-6(-5DT) N30°21.49'

**NEW ORLEANS**  
H-8G, L-21C, 22I  
IAP, AD

W85°47.74'

69 B Class I, ARFF Index C NOTAM FILE ECP

**RWY 16-34:** H1000X150 (CONC-GRVD) S-100, D-155, 2D-400,  
2D/2D2-750 PCN 56 R/B/W/T HIRL CL

**RWY 16:** MALSR. TDZL. PAPI(P4L)—GA 3.0° TCH 72'. RVR-TR Trees.

**RWY 34:** REIL. PAPI(P4L)—GA 3.0° TCH 86'. RVR-TR Trees.

**SERVICE:** FUEL 100LL, JET A LGT When ATCT clsd, ACTVT MALSR  
Rwy 16; REIL Rwy 34; TDZ Rwy 16; cntn Rwy 16-34; PAPI Rwy 16  
and 34; HIRL Rwy 16-34—CTAF.

**AIRPORT REMARKS:** Attended continuously. Birds on and invof arpt. Twy J  
btn Twy D and Taxilane F clsd to acft with wingspan gtr than 80 ft exc  
1 hr PPR—850-769-6033. Twy K, M, E2, E3 btn Twy D and  
Taxilane F rstrd to acft with wingspan gtr than 80 ft. Mil VIP arr/dep  
shall be at arpt term with prior apvl fm arpt auth—850-763-6751  
ext 306.

**AIRPORT MANAGER:** 850-763-6751

**WEATHER DATA SOURCES:** ASOS 119.975 (850) 235-7857. LAWRS.

**COMMUNICATIONS:** CTAF 118.95 ATIS 119.975

Ⓡ **TYNDALL APP/DEP CON** 125.2 (Abv 5000') (1200-2200Z± Mon-Fri,  
clsd weekends, hol, and ACC down days), other times ctc

Ⓡ **JACKSONVILLE CENTER APP/DEP CON** 120.825

**TOWER** 118.95 (1200-0400Z±) **GND CON** 121.65 **CLNC DEL** 123.75

**AIRSPACE:** CLASS D svc 1200-0400Z±; other times CLASS G.

**RADIO AIDS TO NAVIGATION:** NOTAM FILE MAI.

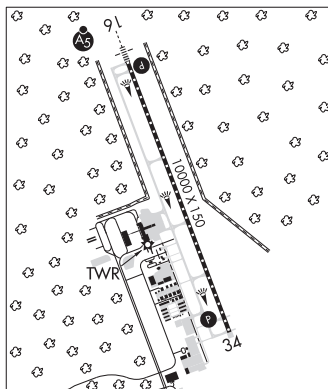
**MARIANNA (L) (L) VORTACW** 114.0 MAI Chan 87 N30°47.17' W85°07.47' 234° 43.2 NM to fld. 128/OE.

VORTAC unusable:

261°-276° byd 25 NM blo 3,000'

346°-061° byd 30 NM blo 2,000'

**ILS/DME** 111.15 I-PUK Chan 48(Y) Rwy 16. Class IIE.



**PATRICK SPACE FORCE BASE** (COF)(KCOF) AF 3 S UTC-5(-4DT) N28°14.10' W80°36.60'

**JACKSONVILLE**  
H-8I, L-24F  
DIAP, AD

8 B TPA—See Remarks NOTAM FILE PIE Not insp.

**RWY 03-21:** H9008X200 (ASPH-CONC-GRVD) PCN 51 R/C/W/T HIRL

**RWY 03:** ALSF1. PAPI(P4L)—GA 3.0° TCH 52'.

**RWY 21:** PAPI(P4L)—GA 3.0° TCH 52'.

**RWY 11-29:** H3993X200 (ASPH) PCN 49 F/B/W/T MIRL

**RWY 11:** PAPI(P4L)—GA 3.0° TCH 49'.

**RWY 29:** PAPI(P4L)—GA 3.0° TCH 51'. Thld dspcld 301'.

**SERVICE:** FUEL JET A++ OX 1, 2 **MILITARY—LGT** Twy A edge lgt btn Twy B and L aprx 17'-78' fm usbl twy sfc. Comd

Post does not have ability to ACVT afld lgt aft afld hr. Rwy 21 non-std thr lgt. Airfield lgts-out ops may be in prog on  
non-intfc basis with non-ptcpg acft. **FUEL** A++, B+, A+. Opr Mon-Fri 1130-0330Z±, On call (1 hr response) Sat-Sun  
and hol. Ltd fuel cpblty avbl for tran acft due to const of fuels storage area—C321-494-5535/DSN 854-5535/1365.

**FLUID SP PRESAIR LHOX LOX OIL** O-128-133-148 **TRAN ALERT** Ops 1300-0500Z± Mon-Fri; clsd hol. All tran arr or dep  
rqr Tran Alert Asst; no arr after 0430Z±. Req for svcs outside nml hr must be forwarded thru afld mgmt NLT 10 work days  
in adv. Chip detection inspection rqr by F-16 not avbl. Hvy acft must provide their own tow bar. Fleet svc unavbl; lav cart  
avbl upon req for aircrew use.

**NOISE:** Noise abatement info—airfield ops DSN 854-2222/C321-494-2222.

**CONTINUED ON NEXT PAGE**

## CONTINUED FROM PRECEDING PAGE

**MILITARY REMARKS:** Attended 1300-0500Z† Mon-Fri, CLOSED hol. Afid clsd third Fri of month. **RSTD** Acft lgr than C-130, NA on 800 Ramp, and 180° turns on Rwy 03-21 ltd to conc ends. Acft turns on Rwy 03-21 rstd to conc ends exc for C-130 and smaller. Min 48 hr ntc rrd and no more than 7 days prior. E side of Twy C clsd to jet acft and acft with wingspan abv 133 ft. Gun berm ltd to A-10 acft or smlr. Twy J west of gun berm clsd. Acft with 188' wingspan and smaller only on Twy A btn 800 Ramp and Rwy 29. Rwy 29 ovrn unusbl. Skid ldg conducted by base asgn R/W acft equipped with skids rstd to Twy B S of Twy C and Rwy 11-29 W of Rwy 03. C-130 and smaller acft only at 800 ramp and int of Twy M and Rwy 11. Twy A between Twy L and Rwy 21 underun rstd to C-130 acft. Offl bus-72 hrs ntc rrd for PPR—ctc AMOPS at DSN 854-2222/2223. PPR valid +/- 30 min fr ETA. 301 RQS cargo sling load area lctd 630' S of COF TACAN and 1140' W of Rwy 21 cntrln. Apv on non-interference basis bt ATC. Over flt of Manatee Cove Campground NA. 301 RQS cargo sling load area lctd at grassy area NW of apch end Rwy 11 along Banana River shoreline N28 14 38, W 80 36 57 is auth for use by 920 RQW HH-60 acft. Coord with afid mgmt rqr prior to use. When conducting cargo sling load ops, ovft of pers, veh, nd prk acft not auth. **CAUTION** First 240' Rwy 29 not vis fm twr. Dur VFR wx cond exer caution due to extv lcl gen avn acft ovr Melbourne Intl 7 NM S. Bird haz potential exists. Migratory Season Phase II 1 Oct-31 Mar. Dur bird watch cond moderate tkof and ldg prmtd; dur bird watch cond severe tkof and ldg na. Ctc Twr/Gnd/ATIS for current bird watch cond code. Rwy 11-29 nonstandard LZ touchdown box markings. Rwy 11-29 both std and assault ldg zone markings. ARFF avbl 6800 gals of agent with 7 ARFF veh. **TFC PAT** TPA—1500' MSL rectangular, 2000' MSL overhead. Tran acft pat work not auth fm 0300-1300Z† (2200-0800 lcl). **CSTMS/AG/IMG** Cstms ltd to tran msn in drct support of SLD 45 and 920 RQW only. All acft rqrq customs support ctc AMOPS 72 hrs prior with PPR. req. If no ntc, exp 2-3 hr delay. All acft rqr support ctc PTD with 30 min out call via direct A/G com or fone patch. **MISC** AMOPS DSN 854-2222; C321-494-2222; fax C321-494-6442. Base tran only avbl Mon-Fri 1200-2100Z†, clsd weekend. Pax terminal avbl Mon 1100-1900Z†, Wed 1230-2130Z† and Tue, Thurs, and Fri 1430-2300Z†. Obsn automated; FMQ-19 obsn wx eqpmt in use H24. Wx obsn/fcst avbl H24—DSN 467-8484; C321-853-8484. Backup support ctc 26 OWS at C318-529-2651. COMSEC stor not avbl at AMOPS; ctc Comd Post (bldg 423, extn 7001) for COMSEC stor. Nstd ovrn len Rwy 03; ovrn 1100'. Nstd chevron mrk exist. Missing chevron at int of Twys A and G. Rwy 03-21 first 1000 ft grooved conc; mid 7000 ft asphalt.

**AIRPORT MANAGER:** 321-494-4028

**COMMUNICATIONS:** ATIS 119.175 273.5 PTD 139.3 372.2 (UHF unreliable)

Ⓡ **ORLANDO APP/DEP CON** 132.65 281.425

**TOWER** 133.75 269.375 (Class D svc 1300-0500Z† Mon-Fri, clsd hol. Airfield clsd third Fri of month)

**GND CON** 124.35 335.8

**CLNC DEL** 118.4 289.4 **PATRICK COMD POST** (Call BARRIER) 139.3 349.4 383.0 (Global HF thru CAPE ROD)

**PMSV METRO** 123.25 225.05 **KING OPS** 150.35 321.0 **RESCUE OPS** 138.475 255.5

**AIRSPACE:** CLASS D svc 1300-0500Z† mon-Fri, clsd hol, airfield clsd third Fri of month; other times CLASS G.

**RADIO AIDS TO NAVIGATION:** NOTAM FILE PIE.

(L) **TACAN** Chan 97 COF (115.0) N28°14.26' W80°36.71' at fld. 5/7W. TACAN unmonitored 0500-1300Z†.

No NOTAM MP: 0900-1500Z† Wed.

TACAN AZIMUTH unusable:

250°-260° byd 15 NM

DME unusable:

250°-260° byd 15 NM

**MELBOURNE (VL) (DH) VOR/DME** 115.85 MLB Chan 105(Y) N28°06.32' W80°38.12' 017° 7.9 NM to fld.

30/7W. NOTAM FILE MLB.

VOR unusable:

010°-020°

021°-065° byd 40 NM

235°-240° byd 40 NM

**ILS** 109.1 I-COF Rwy 03. Class IT. Ry 03 coupled/autoland ILS apch use caution, localizer signal not protected, possible interference. OM not instl, DME or radar rqr. Unmonitored 0500-1300Z† No NOTAM MP: Rwy 03

0900-1500Z† Tue

**ILS** 110.9 I-PKC Rwy 21. Class IT. Unmonitored 0500-1300Z†. No NOTAM MP: Rwy 21 0900-1500Z† Thu.

**COMM/NAV/WEATHER REMARKS:** Wx DSN 467-8484, C321-853-8484.