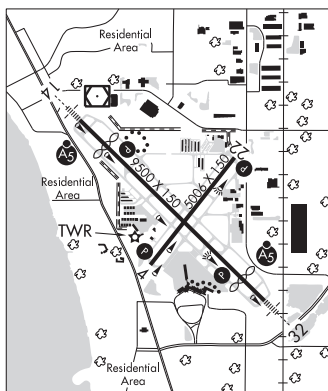


**SARASOTA/BRADENTON INTL** (SRQ)(KSRQ) 3 N UTC-5(-4DT) N27°23.73' W82°33.26'

**MIAMI**  
H-8H, L-21D, 23B  
IAP, AD

- 30 B Class I, ARFF Index C NOTAM FILE SRQ
- RWY 14-32:** H9500X150 (ASPH-GRVD) S-99, D-172, 2S-175, 2D-316 PCN 370F/A/X/T HIRL
- RWY 14:** MALS. PAPI(P4L)—GA 3.0° TCH 52'. Thld dsplcd 1350'. Berm.
- RWY 32:** MALS. PAPI(P4L)—GA 3.0° TCH 51'. Thld dsplcd 1150'.
- RWY 04-22:** H5006X150 (ASPH-GRVD) S-120, D-250, 2S-140, 2D-493, 2D/2D2-999 PCN 580F/A/X/T HIRL
- RWY 04:** PAPI(P4L)—GA 3.0° TCH 46'.
- RWY 22:** REIL. PAPI(P4L)—GA 3.0° TCH 43'. Road.



**LAND AND HOLD-SHORT OPERATIONS**

LDG RWY	HOLD-SHORT POINT	AVBL LDG DIST
RWY 14	04-22	3800

**RUNWAY DECLARED DISTANCE INFORMATION**

<b>RWY 04:</b> TORA-5006 TODA-5006 ASDA-5006 LDA-5006
<b>RWY 14:</b> TORA-8350 TODA-9500 ASDA-8890 LDA-7540
<b>RWY 22:</b> TORA-5006 TODA-5006 ASDA-5006 LDA-5006
<b>RWY 32:</b> TORA-8150 TODA-9500 ASDA-8660 LDA-7510

**SERVICE:** S4 FUEL 100LL, JET A, A+ OX 1, 2, 3, 4 LGT When ATCT clsd ACTVT MALS. Rwy 14 and 32; REIL Rwy 22; PAPI Rwy 04, 22, 14 and 32; HIRL Rwy 04-22 and 14-32—CTAF.

**NOISE:** Strict noise abatement proc in effect for dep jet acct.

**AIRPORT REMARKS:** Attended continuously. Birds on and in/ov arpt. Fld conds unmon 0600-1030Z†. For fuel avbl ctc FBO. Acr fuel svc unavbl aft last sked dep. 24 hr 100LL self svc avbl at north FBO. Twy F ltd to 70,000 lbs GWT. Trml ramp is unctld. Do not call for push/power back. Adz gc when ready to taxi. Acft run-ups prohibited at trml gates. Divd acr acct adzd to use trml ramp. Follow current published dep procs and do not turn prior to departure end of rwy. PPR for high speed taxi test—Arpt ops 941-359-2770 ext 4300. When twr clsd, hold at ILS hold psn signs abeam Rwy 14 and Rwy 32 thr durg all wx conds. Apch to Rwy 14 and Rwy 32 csdrd clear when acft are byd Rwy 14 and Rwy 32 thr base upon ldg drctn. US Cust GA acct at SE end of trml ramp. Trml gate B1 unavbl to acct wingspan more than 118'. Twy R5 clsd to acct wingspan more than 118'. User fee arpt: PPR US Customs user fee arpt; svc Mon-Fri, 1330-2130Z†—813-634-1369. Fee payable on site. No intl diversions accepted unless emerg.

**AIRPORT MANAGER:** 941-359-5200

**WEATHER DATA SOURCES:** ASOS 124.375 (941) 355-8482. LAWRS LLWAS. WSP.

**COMMUNICATIONS:** CTAF 120.1 ATIS 124.375 UNICOM 122.95

RCO 122.1R 117.0T (SAINT PETERSBURG RADIO)

Ⓡ TAMPA APP/DEP CON 119.65 124.95 (4000' and blo)

TOWER 120.1 (1100-0500Z†) GND CON 121.9 CLNC DEL 118.25

**CLEARANCE DELIVERY PHONE:** For CD if una to ctc on FSS freq, ctc Tampa Apch at 813-878-2528.

**AIRSPACE:** CLASS C svc ctc APP CON svc (per TWR/NOTAM 1100-0500Z†) other times CLASS G.

**RADIO AIDS TO NAVIGATION:** NOTAM FILE SRQ.

(VH) (DH) VOR/DME 117.0 SRQ Chan 117 N27°24.42' W82°33.82' at fld, 19/5W.

ILS 111.3 I-FFV Rwy 14. Class ID. LOC unusable byd 25° left and right of course. Unmonitored when ATCT clsd.

ILS 109.7 I-SRQ Rwy 32. Class IT. Unmonitored when ATCT clsd.

**SAUFLEY** N30°28.33' W87°20.15' NOTAM FILE NPA.

**NEW ORLEANS**  
L-21C, 22H

(L) VOR 112.25 NUN 088° 7.7 NM to Pensacola Intl. 77/1E.

RCO 122.1R 112.25T (GAINESVILLE RADIO)