

COLUMBUS (CSG)(KCSG) 3 NE UTC-5(-4DT) N32°30.98' W84°56.33'ATLANTA
H-9A, 12F, L-181
IAP, AD

398 B ARFF Index—See Remarks NOTAM FILE CSG

RWY 06-24: H6997X150 (ASPH-GRVD) D-160, 2D-250

PCR 458 F/C/X/T HIRL

RWY 06: MALSR. PAPI(P4L)—GA 2.61° TCH 48'. RVR-T Trees.**RWY 24:** REIL. PAPI(P4L)—GA 3.0° TCH 43'. Bldg.**RWY 13-31:** H3997X75 (ASPH-PFC) S-12 PCN 12 F/B/W/T MIRL
0.7% up NW**RWY 13:** REIL. PAPI(P4L)—GA 3.0° TCH 36'. Tree.**RWY 31:** REIL. PAPI(P4L)—GA 3.0° TCH 42'. Thld dsplcd 150'. Pole.**RUNWAY DECLARED DISTANCE INFORMATION****RWY 06:** TORA-6997 TODA-6997 ASDA-6997 LDA-6997**RWY 13:** TORA-3997 TODA-3997 ASDA-3907 LDA-3907**RWY 24:** TORA-6997 TODA-6997 ASDA-6997 LDA-6997**RWY 31:** TORA-3997 TODA-3997 ASDA-3997 LDA-3847**SERVICE:** S4 **FUEL** 100LL, JET A **LGT** All lgts oper 1400-0200Z†.
After 0200Z†, ACTVT MALSR Rwy 06; REIL Rwy 24; PAPI Rwy 06
and 24; HIRL Rwy 06-24; MIRL Rwy 13-31; twy lgts; windcone
lgts—CTAF. REIL Rwy 13 and Rwy 31; PAPI Rwy 13 and 31 oper
consly.**AIRPORT REMARKS:** Attended continuously. Rwy 13-31 clsd to acr. Rwy
13-31 not avbl for sked acr opns with more than psgr seats or unsked
acr at least 31 psgr seats. Fuel: self serve 100LL avbl 24 hrs. Birds on and invof arpt. Class I, ARFF Index A. Index B
aircraft rescue and firefighting equipment avbl. Be alert for Rwy 06 at Twy D int dep instructions with rwy rmng 5085 ft
TORA/TODA/ASDA. Be alert for Rwy 06 at Twy F int dep instructions with rwy rmng 5623 ft TORA/TODA/ASDA.**AIRPORT MANAGER:** 706-324-2449**WEATHER DATA SOURCES:** ASOS (706) 576-4715 LLWAS.**COMMUNICATIONS:** CTAF 120.1 ATIS 127.75 UNICOM 122.95

RCO 122.2 (MACON RADIO)

Ⓡ ATLANTA APP/DEP CON 125.5 (1115-0300Z†) 126.55 (7000' and abv)

ATLANTA CENTER APP/DEP CON 120.45 (0300-1115Z†)

TOWER 120.1 (1400-0200Z†) GND CON 121.9

CLEARANCE DELIVERY PHONE: For CD if una to ctc on FSS freq, ctc Atlanta Apch at 678-364-6132, when ATCT clsd ctc Atlanta
ARTCC at 770-210-7692.**AIRSPACE:** CLASS D svc 1400-0200Z†; other times CLASS E.**RADIO AIDS TO NAVIGATION:** NOTAM FILE CSG.

(L) TACAN Chan 118 CSG (117.1) N32°36.92' W85°01.06' 145° 7.1 NM to fld. 635/1E.

TACAN AZIMUTH unusable:

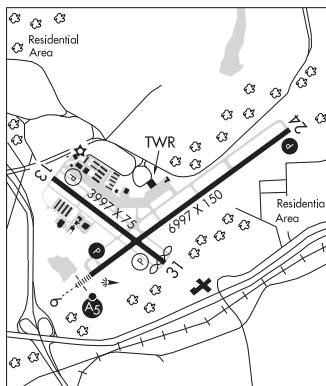
015°-030°

TACAN DME unusable:

015°-030°

FENIX NDB (LOMW) 355 CS N32°27.12' W85°02.52' 056° 6.5 NM to fld. 355/2W.

ILS 110.3 I-CSG Rwy 06. Class IB. LOM FENIX NDB. Autopilot cpd apch NA blw 900' MSL.

**CONEY** N31°59.87' W83°51.71' NOTAM FILE MCN.JACKSONVILLE
L-18J

NDB (MHW) 400 OHY 103° 4.5 NM to Crisp Co-Cordele. 313/6W. NDB unmonitored 2200-1200Z†.

COOK CO (See ADEL on page 190)