

WILLIAMSTON

MARTIN CO (MCZ)(KMCZ) 6 W UTC-5(-4DT) N35°51.73' W77°10.69'

CHARLOTTE  
H-9C, 12H, L-35C  
IAP

75 B NOTAM FILE RDU  
RWY 03-21: H5000X75 (ASPH) S-21 MIRL  
RWY 03: PAPI(P2L)—GA 3.0° TCH 35'. Road.  
RWY 21: PAPI(P2L)—GA 3.0° TCH 24'. Road.  
SERVICE: FUEL 100LL, JET A1 LGT PAPI Rwy 03 and 21 opr  
consly. MIRL Rwy 03-21 dusk to dawn; to chg inst—CTAF. Rwy  
03 OTS indef.

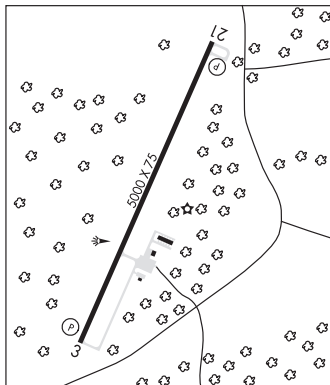
AIRPORT REMARKS: Attended 1300-2200Z±. For svc after hrs call  
252-799-8718 or 252-217-4023. Deer on and invof arpt.  
100LL and Jet A has 24 hr self svc with credit card. Rwy 03 has  
a mkd dsplcd thr of 45' (unpubld).

AIRPORT MANAGER: 252-792-1971  
WEATHER DATA SOURCES: AWOS-3P 118.65 (252) 802-4261.  
COMMUNICATIONS: CTAF/UNICOM 122.8

WASHINGTON CENTER APP/DEP CON 123.85  
CLEARANCE DELIVERY PHONE: For CD ctc Washington ARTCC at  
703-771-3587.

RADIO AIDS TO NAVIGATION: NOTAM FILE RDU.  
TAR RIVER (VL) (H) VORTAC 117.8 TYI Chan 125 N35°58.60'  
W77°42.22' 110° 26.5 NM to fld. 73/5W.

VOR unusable:  
048°-052° byd 40NM blo 6,000'  
186°-189° byd 40 NM blo 6,000'  
298°-318° byd 40 NM blo 6,000'



WILMINGTON INTL (ILM)(KILM) P (AF) 3 NE UTC-5(-4DT) N34°16.27' W77°54.17'

CHARLOTTE  
H-9C, L-35B  
IAP, DIAP, AD

32 B LRA Class I, ARFF Index C NOTAM FILE ILM  
RWY 06-24: H8016X150 (ASPH-GRVD) S-75, D-160, 2S-175,  
2D-275 PCN 78 F/B/W/T HIRL

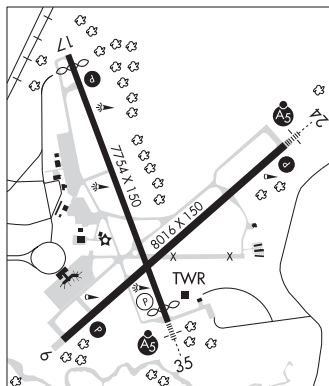
RWY 06: REIL. PAPI(P4R)—GA 3.0° TCH 57'. RVR-TR  
RWY 24: MALSR. PAPI(P4L)—GA 3.0° TCH 48'. RVR-TR  
RWY 17-35: H7754X150 (ASPH-GRVD) S-60, D-185, 2S-175,  
2D-300 PCN 61 F/B/W/T HIRL  
RWY 17: REIL. PAPI(P4L)—GA 3.0° TCH 50'. RVR-R Thld dsplcd  
350'.  
RWY 35: MALSR. PAPI(P4L)—GA 3.0° TCH 36'. RVR-T Thld dsplcd  
400'.

RUNWAY DECLARED DISTANCE INFORMATION  
RWY 06: TORA-8016 TODA-8016 ASDA-8016 LDA-8016  
RWY 17: TORA-7754 TODA-7754 ASDA-6954 LDA-6604  
RWY 24: TORA-8016 TODA-8016 ASDA-8016 LDA-8016  
RWY 35: TORA-7754 TODA-7754 ASDA-7604 LDA-7204  
SERVICE: S4 FUEL 100LL, JET A, A+ OX 1, 2, 3, 4 LGT Actvt  
MALSR Rwy 24 and 35; REIL Rwy 06 and 17; PAPI Rwy 06, 17, 24;  
HIRL Rwy 06-24 and 17-35; and all twy lgts—CTAF. MILITARY—FUEL  
A, A+ (C910-763-4691.) (NC-100LL)

AIRPORT REMARKS: Attended continuously. Acft taxiing from south ramp  
obtain ATC clnc prior to crossing Rwy 17-35 1100-0400Z±. Traffic pattern alt 1000' AGL reciprocating engine, 1500'  
AGL tbtj/jet. OHD: 5 mile initial 2500 ft AGL, break 2000 ft AGL. Tower calls drctn of break. Carrier break NA. Flight  
Notification Service (ADCUS) avbl.

AIRPORT MANAGER: 910-341-4333  
WEATHER DATA SOURCES: ASOS (910) 254-5254  
COMMUNICATIONS: CTAF 119.9 ATIS 124.975 UNICOM 122.95  
RCO 122.6 (RALEIGH RADIO)  
RCO 122.1R 117.0T (RALEIGH RADIO)  
CLNC DEL 120.875

APP/DEP CON 135.75 317.425 (344°-163°) 118.25 284.65 (164°-343°) (1100-0400Z±)  
WASHINGTON CENTER APP/DEP CON 135.75 317.425 (0400-1100Z±)  
TOWER 119.9 120.875 239.3 (1100-0400Z±) GND CON 121.9 348.6  
CLEARANCE DELIVERY PHONE: For CD if una to ctc on FSS freq, ctc Washington ARTCC at 703-771-3587.



CONTINUED ON NEXT PAGE

CONTINUED FROM PRECEDING PAGE

AIRSPACE: CLASS D svc 1100-0400Z±; other times CLASS E.

TRSA svc ctc APP CON within 20 NM

RADIO AIDS TO NAVIGATION: NOTAM FILE ILM.

(H) (H) VORTAC 117.0 ILM Chan 117 N34°21.10' W77°52.46' 203° 5.0 NM to fld. 29/7W.

VOR portion unusable:

051°-185°

164°-051° blo 17,500'

186°-229° blo 3,000'

230°-315° byd 5 NM blo 17,500'

316°-050° blo 8,000'

TACAN DME unusable:

015°-305° byd 30 NM blo 2,500'

TACAN AZIMUTH unusable:

129°-160° byd 30 NM blo 2,500'

WILZE NDB (LOMW) 205 GM N34°20.24' W77°48.71' 239° 6.0 NM to fld. 28/10W.

AIRLI NDB (LOMW) 281 IL N34°11.48' W77°51.98' 349° 5.1 NM to fld. 12/10W.

ILS/DME 109.95 I-GNM Chan 36(Y) Rwy 06. Class IE.

ILS 111.55 I-GMX Rwy 24. Class IIE. LOM WILZE NDB.

ILS 110.3 I-ILM Rwy 35. Class IT. LOM AIRLI NDB. Glideslope unusable byd 9 NM. Autopilot-cpd apchs NA blo 238' MSL.

**WILSON INDUSTRIAL AIR CENTER** (W03) 3 N UTC-5(-4DT) N35°46.22' W77°58.19'

CHARLOTTE

160 B NOTAM FILE RDU

L-35B, 36G

RWY 03-21: H4500X150 (ASPH) S-20 MIRL

RWY 03: REIL. Trees.

RWY 21: REIL. Trees.

RWY 15-33: H4499X150 (ASPH) S-20

RWY 15: Trees.

RWY 33: Trees.

RWY 09-27: H4498X150 (ASPH) S-20

RWY 09: Trees.

RWY 27: Trees.

SERVICE: FUEL 100LL, JET A1+ LGT Actvt REIL Rwsy 03-21; MIRL

Rwy 03-21—CTAF. REIL Rwy 03-21 OTS indef.

AIRPORT REMARKS: Attended 1300-2300Z±. For svc after hrs call 252-292-8443. Unatndd Thanksgiving and Christmas Day. For svc aft hrs call 252-361-0663. Rwy 09-27 rough sfc due to excessive crack sealant. Deer on and invof arpt. No line of sight btn rwy ends. Rwy 09 and 15 marking type condition due to line under rwy nr and lctn fm end. Rwy 15-33 lateral, transverse, block cracking, fod, failed sealant.

AIRPORT MANAGER: 252-399-2489

COMMUNICATIONS: CTAF/UNICOM 123.0

ROCKY MOUNT RCO 122.2 (RALEIGH RADIO)

Ⓡ WASHINGTON CENTER APP/DEP CON 123.85

CLEARANCE DELIVERY PHONE: For CD ctc Washington ARTCC at 703-771-3587.

RADIO AIDS TO NAVIGATION: NOTAM FILE RDU.

TAR RIVER (VL) (H) VORTAC 117.8 TYI Chan 125 N35°58.60' W77°42.22' 231° 17.9 NM to fld. 73/5W.

VOR unusable:

048°-052° byd 40NM blo 6,000'

186°-189° byd 40 NM blo 6,000'

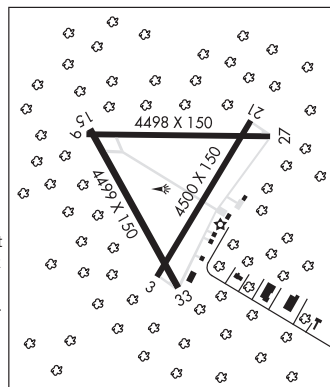
298°-318° byd 40 NM blo 6,000'

KINSTON (L) (L) VORTAC 117.5 ISO Chan 122 N35°22.26' W77°33.50' 325° 31.3 NM to fld. 70/5W. NOTAM FILE ISO.

VOR unusable:

Blw 5,000'

Byd 10NM



**WILSON'S** (See HICKORY on page 315)

**WILZE** N34°20.24' W77°48.71' NOTAM FILE ILM.

CHARLOTTE

NDB (LOMW) 205 GM 239° 6.0 NM to Wilmington Intl. 28/10W.