

WINDOW ROCK (RQE)(KRQE) 1 S UTC-7 N35°39.12' W109°04.04'

6742 B NOTAM FILE RQE

RWY 03-21: H7000X75 (ASPH) S-30, D-45, 2D-75 MIRL**RWY 03:** REIL. PAPI(P2L)—GA 3.0° TCH 42'. Fence.**RWY 21:** REIL. Rgt tfc.**SERVICE:** LGT ACTVT REIL Rwy 03 and 21; MIRL Rwy 03-21—CTAF.**AIRPORT REMARKS:** Attended Mon-Fri 1500-0000Z. Gate access code 2476. Twy turn-a-round at Rwy 03 thr unusable due to large cracks, ruts, holes and loose aggregate. Hills and cliffs all quadrants. Turbulence may be experienced in/ov arpt.**AIRPORT MANAGER:** 928-871-6466**WEATHER DATA SOURCES:** ASOS 118.325 (928) 810-7235.**COMMUNICATIONS:** CTAF/UNICOM 122.8

Ⓡ ALBUQUERQUE CENTER APP/DEP CON 124.325

CLEARANCE DELIVERY PHONE: For CD ctc Albuquerque ARTCC at 505-856-4861.**RADIO AIDS TO NAVIGATION:** NOTAM FILE GUP.**GALLUP (VH) (H) VORTAC** 115.1 GUP Chan 98 N35°28.56'

W108°52.36' 304° 14.2 NM to fld. 7051/14E.

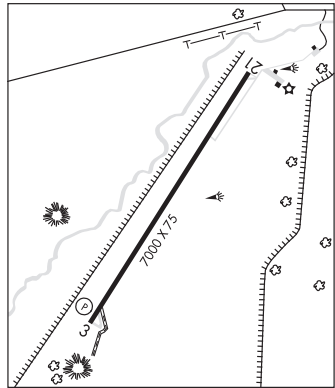
VOR unusable:

298°-306° byd 40 NM

DENVER

H-4K, L-8H

IAP

**WINSLOW-LINDBERGH RGNL** (INW)(KINW) 1 W UTC-7 N35°01.31' W110°43.35'

4941 B NOTAM FILE INW MON Airport

RWY 04-22: H7499X150 (ASPH) S-50, D-80, 2S-102, 2D-125

MIRL 0.8% up SW

RWY 22: REIL. VASI(V4L)—GA 3.0° TCH 40'. Thld dsplcd 1262'. Tree.**RWY 11-29:** H7100X150 (ASPH) S-60, D-70, 2S-89, 2D-110 MIRL

0.4% up NW

RWY 11: REIL. VASI(V4L)—GA 3.0° TCH 36'. Rgt tfc.**RWY 29:** VASI(V4L)—GA 3.0° TCH 28'. Thld dsplcd 344'. Fence.**RUNWAY DECLARED DISTANCE INFORMATION****RWY 04:** LDA-7499**RWY 11:** LDA-7100**RWY 22:** LDA-6236**RWY 29:** LDA-6756**SERVICE:** FUEL 100LL, JET A LGT ACTIVATE REIL Rwy 11 and Rwy 22; MIRL Rwy 04-22 and Rwy 11-29—CTAF. VASI Rwy 11 and Rwy 29 opr consly.**AIRPORT REMARKS:** Attended Mon-Fri 1400-0100Z, Sat-Sun

1500-0000Z. After hr svc - 928-587-2630. Rwy 11-29 edges both sides rough with cracks & vegetation; center ptn has lrg cracks & 4 in holes. Rwy 11 markings faded. Rwy 29 markings faded. SW corner of Forest Svc ramp clsd. Landing fee for commercial aircraft. Overnight tiedown fee.

AIRPORT MANAGER: 928-289-2422**WEATHER DATA SOURCES:** ASOS 118.875 (928) 289-0134.**COMMUNICATIONS:** CTAF/UNICOM 122.8

RCO 122.6 (PRESCOTT RADIO)

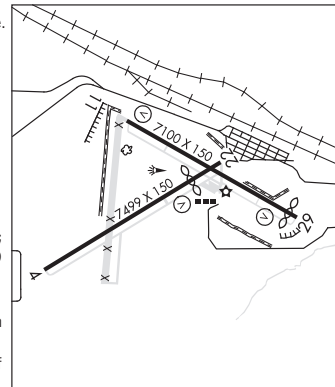
Ⓡ ALBUQUERQUE CENTER APP/DEP CON 127.675

CLEARANCE DELIVERY PHONE: For CD if una to ctc on FSS freq, ctc Albuquerque ARTCC at 505-856-4561.**AIRSPACE:** CLASS E svc 1100-0600Z; other times CLASS G.

PHOENIX

H-4K, L-8G

IAP



CONTINUED ON NEXT PAGE

CONTINUED FROM PRECEDING PAGE

RADIO AIDS TO NAVIGATION: NOTAM FILE INW.

(VH) (H) VORTACW 112.6 INW Chan 73 N35°03.70' W110°47.70' 110° 4.3 NM to fld. 4913/14E.

VOR unusable:

- 015°-021° byd 40 NM
- 022°-032° byd 40 NM blo 31,000'
- 033°-043° byd 40 NM blo 13,000'
- 033°-043° byd 96 NM
- 044°-050° byd 40 NM
- 073°-077° byd 40 NM
- 120°-160° byd 40 NM
- 161°-171° byd 40 NM blo 16,000'
- 161°-171° byd 48 NM
- 172°-185° byd 40 NM blo 12,000'
- 172°-185° byd 63 NM
- 186°-191° byd 40 NM
- 192°-202° byd 40 NM blo 10,000'
- 192°-202° byd 62 NM
- 203°-215° byd 40 NM blo 14,000'
- 203°-215° byd 77 NM
- 216°-281° byd 40 NM
- 282°-292° byd 40 NM blo 18,000'
- 302°-307° byd 40 NM

YUMA MCAS/YUMA INTL (NYL)(KNYL) MIL/CIV N 3 S UTC-7 N32°39.39' W114°36.36'

213 B TPA—See Remarks AOE Class I, ARFF Index A NOTAM FILE NYL

PHOENIX
H-4J, L-5A
IAP, DIAP, AD

RWY 03L-21R: H13300X200 (CONC) S-103, D-200, 2D-400

PCN 80 R/C/W/T HIRL

RWY 03L: REIL. PAPI(P4L)—GA 3.0° TCH 53'. Rgt tfc.

RWY 21R: MALSR. PAPI(P4L)—GA 3.0° TCH 50'.

RWY 03R-21L: H9240X150 (ASPH-CONC) S-162, D-200, 2D-400

PCN 61 F/B/W/T HIRL 0.4% down SW

RWY 03R: REIL. PAPI(P4L)—GA 3.0° TCH 50'. Antenna. Rgt tfc.

RWY 21L: REIL. PAPI(P4L)—GA 3.0° TCH 51'. Road.

RWY 08-26: H6146X150 (ASPH) S-63, D-137, 2D-206

PCN 74 F/B/W/T HIRL 0.3% up E

RWY 08: Road. Rgt tfc.

RWY 26: Road.

RWY 17-35: H5710X150 (ASPH-CONC) S-72, D-171, 2D-255

PCN 81 F/B/W/T HIRL

RWY 17: PAPI(P4L)—GA 3.0° TCH 40'. Tree. Rgt tfc.

RWY 35: REIL. Brush.

RUNWAY DECLARED DISTANCE INFORMATION

RWY 03L:TORA-13300 TODA-13300 ASDA-13300 LDA-13300

RWY 03R:TORA-9240 TODA-9240 ASDA-9240 LDA-9240

RWY 08: TORA-6146 TODA-6146 ASDA-6146 LDA-6146

RWY 17: TORA-5710 TODA-5710 ASDA-5710 LDA-5710

RWY 21L:TORA-9240 TODA-9240 ASDA-9240 LDA-9240

RWY 21R:TORA-13300 TODA-13300 ASDA-13300 LDA-13300

RWY 26: TORA-6146 TODA-6146 ASDA-6146 LDA-6146

RWY 35: TORA-5710 TODA-5710 ASDA-5710 LDA-5710

ARRESTING GEAR/SYSTEM

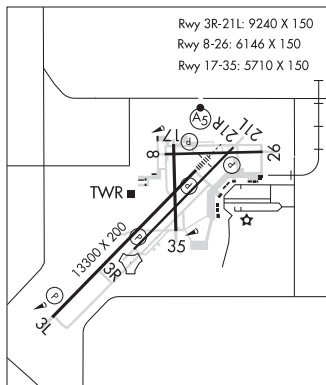
RWY 03L HOOK E28(B) (3495 FT)

RWY 03R HOOK E28(B) (2725 FT)

HOOK E28(B) (1699 FT) **RWY 21R**

HOOK E28(B) (1675 FT) **RWY 21L**

SERVICE: S2 **FUEL** 100, JET A, A+ **OX** 1, 2, 3, 4



CONTINUED ON NEXT PAGE