

TUBA CITY (TØ3) 5 W UTC-7 N36°05.56' W111°22.99'LAS VEGAS
H-4J, L-8G

4513 B NOTAM FILE PRC

RWY 15-33: H6230X75 (ASPH) S-12.5 MIRL

RWY 15: PAPI(P2L)—GA 3.0° TCH 40'.

RWY 33: PAPI(P2L)—GA 3.0° TCH 40'.

SERVICE: LGT ACTVT PAPI Rwy 15 and 33; MIRL Rwy 15-33—CTAF.

AIRPORT REMARKS: Unattended. Livestock on arpt. Arpt

aces—928-283-2501; gate code: 4513. Rwy 15-33 N 1500 ft sfc undulations up to 8 in.

AIRPORT MANAGER: (505) 728-2804

COMMUNICATIONS: CTAF 122.9

RCO 122.05R 113.5T (PRESCOTT RADIO)

RADIO AIDS TO NAVIGATION: NOTAM FILE PRC.

(VH) (H) VORTAC 113.5 TBC Chan 82 N36°07.28'

W111°16.18' 238° 5.8 NM to fld. 5045/15E.

VOR unusable:

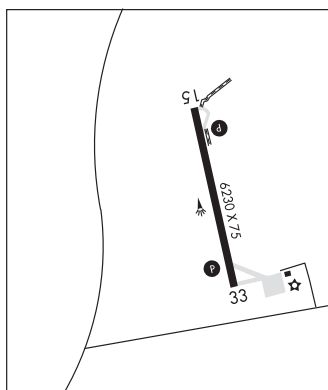
089°-160° byd 40 NM

183°-202° byd 40 NM

207°-231° byd 40 NM

235°-245° byd 40 NM

275°-053° byd 40 NM

**TUCSON****RYAN FLD** (RYN)(KRYN) 10 SW UTC-7 N32°08.53' W111°10.47'PHOENIX
H-4J, L-5C
IAP, AD

2419 B TPA-3219(800) NOTAM FILE PRC

RWY 06R-24L: H5500X75 (ASPH) S-12.5, D-30 MIRL

RWY 06R: REIL. PAPI(P4L)—GA 3.0° TCH 53'. Rgt tfc.

RWY 24L: VASI(V4L)—GA 3.0° TCH 26'.

RWY 06L-24R: H4900X75 (ASPH) S-12.5, D-30 MIRL

RWY 06L: REIL. PAPI(P4L)—GA 3.0° TCH 42'.

RWY 24R: PAPI(P4L)—GA 3.0° TCH 42'. Rgt tfc.

RWY 15-33: H4010X75 (ASPH) MIRL 0.8% up S

RWY 15: Rgt tfc.

SERVICE: S4 FUEL 100LL, JET A LGT When ATCT clsd ACTVT PAPI Rwy 06R, 06L, and 24R; VASI Rwy 24L; MIRL Rwy 06R-24L and 15-33—CTAF. Rwy 24R PAPI unusbl byd 4.9 NM.

AIRPORT REMARKS: Attended Mon-Fri 1500-0000Z, Sat 1500-0000Z.

Fuel A 1500-0000Z; aft hr svc fee-520-744-7474; 100LL self serve H24 with credit card. Rwy 06L-24R CLSD when ATCT clsd. Rwy 06L and 06R calm wind rwy; aftn wind may favor Rwy 24L and Rwy 24R. Use Indg lgts in pat. Rwy 06R fgt ILS practice apchs. Note: See Special Notices—Glider Operations Northwest of Tucson, Arizona.

AIRPORT MANAGER: 520-573-8100

WEATHER DATA SOURCES: AWOS-3 133.35 (520) 578-0269.

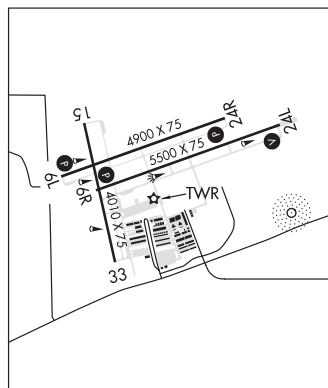
COMMUNICATIONS: CTAF 125.8 ATIS 133.35 (520-578-0269)

® TUCSON APP/DEP CON 128.5

TOWER 125.8 120.35 (1300-0300Z) GND CON 118.2

CLEARANCE DELIVERY PHONE: For CD when ATCT is clsd ctc Tucson Apch at 520-829-6121.

AIRSPACE: CLASS D svc 1300-0300Z; other times CLASS E.



CONTINUED ON NEXT PAGE

CONTINUED FROM PRECEDING PAGE

RADIO AIDS TO NAVIGATION: NOTAM FILE TUS.

TUCSON (VH) (H) VORTAC 116.0 TUS Chan 107 N32°05.71' W110°54.89' 270° 13.5 NM to fld. 2671/12E.

VOR unusable:

050°-080° byd 30 NM blo 11,500'

066°-076° byd 40 NM blo 11,500'

066°-076° byd 48 NM

077°-131° byd 40 NM

141°-164° byd 40 NM

191°-231° byd 40 NM

245°-249° byd 40 NM

290°-300° byd 40 NM blo 8,000'

290°-300° byd 52 NM

330°-341° byd 40 NM blo 9,000'

330°-341° byd 52 NM

342°-065° byd 40 NM

350°-020° byd 30 NM blo 13,000'

TACAN AZIMUTH unusable:

050°-080° byd 30 NM blo 11,500'

155°-165° byd 35 NM blo 13,000'

350°-020° byd 30 NM blo 13,000'

DME unusable:

050°-080° byd 30 NM blo 11,500'

155°-165° byd 35 NM blo 13,000'

350°-020° byd 30 NM blo 13,000'

NDB (HW) 338 RYN N32°08.33' W111°09.69' at fld. 2420/12E. NOTAM FILE PRC. NDB unmonitored.

NDB unusable:

025°-050° byd 25 NM blo 14,500'

ILS/DME 111.1 I-IVL Chan 48 Rwy 06R. Class IT.

COMM/NAV/WEATHER REMARKS: (All rys, except Ry 06L-24R when stated on the ATIS) twr frequency will be 120.35.