

HOMER

BOOTLEGGERS COVE (2AK4) PVT 11 NW UTC-9(-8DT) N59°28.20' W151°30.75'

45 NOTAM FILE Not insp.

RWY 12-30: 1200X70 (GRVL)

RWY 30: Hill. Rgt tfc.

AIRPORT REMARKS: Unattended. Rwy 12, light on shore breeze creates 4 to 5 knot tailwind most summer days.

AIRPORT MANAGER: 907-235-7771

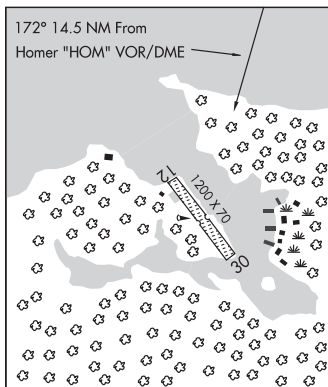
RADIO AIDS TO NAVIGATION: NOTAM FILE HOM.

HOMER (H) (H) VORW/DME 114.6 HOM Chan 93 N59°42.57'

W151°27.40' 172° 14.5 NM to fld. 1626/15E.

COMM/NAV/WEATHER REMARKS: Local call to Homer FSS dial 235-8588. For a toll free call to Kenai FSS dial 1-866-864-1737

SEWARD
L-1A, 2J, 3D, 4F



HOMER (HOM)(PAHO) 2 E UTC-9(-8DT) N59°38.73' W151°28.60'

84 B TPA—See Remarks ARFF Index—See Remarks NOTAM FILE HOM

RWY 04-22: H6701X150 (ASPH-GRVD) S-62, D-70, 2D-189

PCR 511 F/A/X/T HIRL

RWY 04: MALSF. PAPI(P4L)—GA 3.0° TCH 56'. Antenna. Rgt tfc.

RWY 22: MALS. PAPI(P4L)—GA 3.0° TCH 56'. Tree.

SERVICE: S2 FUEL 100LL, JET A LGT ACTVT MALSF Rwy 04; MALS Rwy 22; PAPI Rwy 04 and 22; HIRL Rwy 04-22—CTAF.

NOISE: Noise abatement in efct H24; turns bfr dep end Rwy 04-22 NA at Homer and SPB; rpt obs dev to FAA safety hotline.

AIRPORT REMARKS: Attended Nov-Mar 1300-0600Z, April-Oct 1500-0600Z. Class I, ARFF Index A. PPR for acf ops more than 30 pax seats in writing—AMGR: 2320 Kachemak Dr., Homer, AK 99603. Durg acf ops only. Sea birds and water fowl on infov arpt durg spring and summer. PAEW may be on the rwy H24. Lgtd helipad ctc 123.05. Rwy cond, snow/ice rpt and removal, wildlife ctl or otr svc avbl durg sked maint hr; aft hr svc—AMGR. Line of site btn rwy ends NA. Twy A, B South, D and E clsd to acft over 12,500 lb. Grvl road S side of rwy clsd to acft; tax NA. Transient general aviation parking on south side of rwy. GA tsnt prkg S side of rwy. 365 ft unlgt twr 9 NM W. TPA 800' AGL for fixed wing acft, 600' AGL and below for rotary acft. Sand gradation lgr than FAA rcmd; see AC150/5200-30.

AIRPORT MANAGER: 907-235-5217

WEATHER DATA SOURCES: ASOS 135.65 (907) 235-3603. (WX CAM)

COMMUNICATIONS: CTAF 123.6 AFIS 135.65 (1500-0630Z) OT ctc Kenai FSS)

UNICOM 123.0

FSS HOM (HOMER) 1500-0630Z OT ctc Kenai FSS.

HOMER RADIO 121.5 122.2 123.6 243.0 (LAA 123.6)

RCO 121.5 122.2 123.6 243.0 (KENAI RADIO)

® **ANCHORAGE CENTER APP/DEP CON** 125.9 270.3

AIRSPACE: CLASS E svc 1500-0630Z; other times CLASS G.

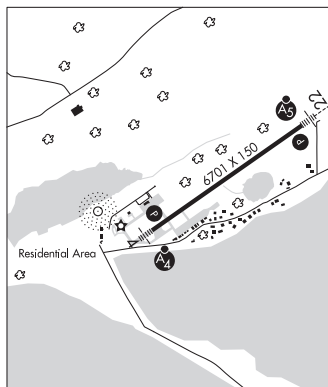
RADIO AIDS TO NAVIGATION: NOTAM FILE HOM.

(H) (H) VORW/DME 114.6 HOM Chan 93 N59°42.57' W151°27.40' 174° 3.9 NM to fld. 1626/15E.

KACHEMAK NDB (HW) 277 ACE N59°38.48' W151°30.02' at fld. 17E.

LOC/DME 109.3 I-HOM Chan 30 Rwy 04. DME back course unusable byd 15° right of course. LOC back course unusable byd 15° right of course; byd 10 NM blo 2,700'; byd 12.8 NM blo 3,600'.

COMM/NAV/WEATHER REMARKS: For a toll free call to Kenai FSS dial 1-866-864-1737. Local call to Homer FSS dial 235-8588. Addn UNICOM freqs: 122.700 or 123.050. AFIS operds by HOM FSS when open, OT Kenai FSS.



SEWARD
H-1B, 2K, L-1A, 2J, 3D, 4F
IAP