

JENSENS

FORT JENSEN (AK60) PVT 0 NE UTC-9(-8DT) N57°53.11' W157°05.81'

240 NOTAM FILE

RWY 06-24: 4700X125 (GRVL)

RWY 24: Brush.

AIRPORT REMARKS: Unattended. Rwy not maintained. Soft during spring thaw.

AIRPORT MANAGER: 907-243-6667

COMM/NAV/WEATHER REMARKS: For a toll free call to Kenai FSS dial 1-866-864-1737.

KODIAK
H-2J, L-2J, 3C

JOHNSONS LANDING (See BEAR LAKE on page 57)

JOHNSTONE POINT N60°28.86' W146°35.96' NOTAM FILE JNU.

(H) (H) **VOR/DME** 116.7 JOH Chan 114 335° 23.7 NM to Tatitlek. 48/18E.

wx cam

VOR unusable:

090°-124° byd 23 NM blo 8,000'

125°-188° byd 10 NM

DME unusable:

090°-124° byd 23 NM blo 12,000'

125°-191° byd 10 NM

RCO 122.1 (JUNEAU RADIO)

ANCHORAGE
H-1B, L-1A, 3E, 4H

JONES LANDING SPB (See BIG LAKE on page 62)

JUNEAU INTL (JNU)(PAJN) 7 NW UTC-9(-8DT) N58°21.28' W134°34.71'

25 B TPA—See Remarks AOE Class I, ARFF Index C NOTAM FILE JNU

RWY 08-26: H8857X150 (ASPH-GRVD) S-120, D-250, 2D-550

PCR 892 F/A/X/T HIRL CL

RWY 08: MALSF. REIL. VASI(V2L)—GA 3.5° TCH 38'. RVR-TR Tower. Rgt tfc.

RWY 26: MALSF. REIL. PAPI(P4L)—GA 3.5° TCH 46'. RVR-TR

RUNWAY DECLARED DISTANCE INFORMATION

RWY 08: TORA-8857 TODA-8857 ASDA-8457 LDA-8457

RWY 26: TORA-8857 TODA-8857 ASDA-8457 LDA-8457

SERVICE: S4 **FUEL** 100LL, JET A1 + **LGT** ACTVT MALSF Rwy 08; REIL Rwy 26; HIRL Rwy 08-26 - JNU ATCT or when ATCT clsd FSS - 118.7. VASI Rwy 08; PAPI Rwy 26 opr constly. Rwy 26 PAPI unusbl byd 2 NM due to terrain. Rwy 08 VASI unusbl byd 06 degs left of cntrl. Rwy 08 VASI aligned 13 deg R of cntrl; not vis on cntrl. Rwy 08 RLLS lgts. Rwy 26 rwy end NSTD; length 800 ft.

AIRPORT REMARKS: Attended continuously. Fuel svc - UNICOM or

907-789-0055/5622. Wildlife and birds on and infov arpt. Hvy hel and acft act Apr 15-Oct 1; full len Gastineau Channel and within 5 miles. Paragliding activity 3 miles North; infov Thunder Mtn and over Gastineau Channel nears downtown Apr 15-Oct 1; 6000' and blw. Airframe repairs: single/twin propeller engine; turbine and avionics. Mil contract fuel avbl. National Guard 24 hr PPR - C907-789-3366. Weekday 1630-0100Z ctc National Guard Ops

10 minutes bfr Indg - 124.65. Mountainous background restricts controllers visibility of apch Rwy 26. Rwy visibility value Rwy 08 and Rwy 26 avbl. Cold temperature airport. Altitude correction required at or below OC. Apron terminal ramp clsd to rotorcraft. CUSTOMS ramp clsd to wingspan grtr than 79'. Intl rotorcraft use E-1 National Guard ramp. TPA 1500' AGL for large turbine acft, 1000' AGL for fixed wing acft and 500' AGL for helicopters. Rwy 08-26 sand used for friction may not meet FAA specs. Ldg fee. See Special Notices and General Notices for additional information on ops in Juneau area.

AIRPORT MANAGER: 907-789-7821

WEATHER DATA SOURCES: ASOS (907) 789-1243 LLWAS. (WX CAM)

COMMUNICATIONS: CTAF 118.7 UNICOM 122.95 ATIS 135.2

FSS JNU (JUNEAU)

JUNEAU RADIO 118.7 121.5 122.2 243.0

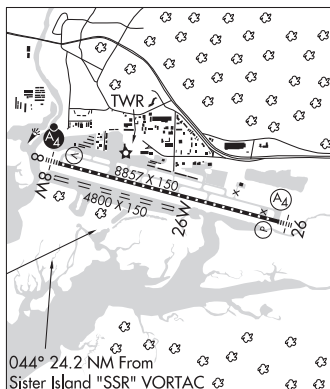
JUNEAU DOWNTOWN RCO 122.15 (JUNEAU FSS)

Ⓡ ANCHORAGE CENTER APP/DEP CON 133.9

TOWER 278.3 118.7 120.7 (Apr 1-Sep 30 1500-0800Z, Oct 1-Mar 31 1600-0500Z) GND CON 121.9

NG OPS 124.65 64.70

AIRSPACE: CLASS D svc 1 Apr - Sep 30 1500-0800Z, 1 Oct-Mar 31 1600-0500Z; other times CLASS E.



JUNEAU
H-1C, L-1B
IAP, AD

CONTINUED ON NEXT PAGE

CONTINUED FROM PRECEDING PAGE

VOR TEST FACILITY (VOT) 111.0

RADIO AIDS TO NAVIGATION: NOTAM FILE JNU.

SISTERS ISLAND (H) (H) VORTACW 114.0 SSR Chan 87 N58°10.66' W135°15.53' 043° 24.0 NM to fld. 40/20E.

VOR unusable:

- 050°-070° byd 12 NM blo 10,000'
- 115°-130° byd 32 NM blo 8,000'
- 131°-175° byd 25 NM blo 13,000'
- 176°-189° byd 35 NM blo 14,000'
- 190°-245° byd 30 NM blo 12,000'
- 246°-260° byd 18 NM blo 7,000'
- 306°-360° byd 21 NM

TAC AZM unusable:

- 050°-070° byd 12 NM blo 10,000'
- 115°-130° byd 32 NM blo 8,000'
- 131°-175° byd 25 NM blo 13,000'
- 176°-189° byd 28 NM blo 14,000'
- 190°-245° byd 30 NM blo 12,000'
- 246°-260° byd 18 NM blo 7,000'
- 306°-360° byd 21 NM

DME unusable:

- 050°-070° byd 12 NM blo 10,000'
- 115°-130° byd 32 NM blo 8,000'
- 131°-175° byd 25 NM blo 13,000'
- 176°-189° byd 28 NM blo 14,000'
- 190°-245° byd 30 NM blo 12,000'
- 246°-260° byd 18 NM blo 7,000'
- 306°-360° byd 21 NM

COGHLAN ISLAND NDB (HWZ) 212 CGL N58°21.56' W134°41.97' 074° 3.8 NM to fld. 58/20E.

NDB unusable:

- 325°-050° byd 30 NM
- 270°-324° byd 35 NM
- 220°-270° byd 24 NM blo 13,000'

LDA/DME 109.9 I-JDL Chan 36 Rwy 08. LOC unusable byd 30° left of inbound course.

COMM/NAV/WEATHER REMARKS: When ATCT clsd arpt adzy svc – FSS 118.7. For a toll free call to Juneau FSS dial 1–866–297–2236. Juneau FSS – lcl 907–789–7380. Between May and Sep an additional twr freq of 120.7 will be in use. Its use will be announced via the ATIS. All other times use 118.7. Juneau Intl Seaplane Basin contact Juneau Tower on freq 118.7 for taxi, take-off and landing instructions. Waterlane controlled by Juneau Tower. Taxiing acct should taxi clockwise around the outer edge of float pond.



WATERWAY 08W–26W: 4800X150 (WATER)

SEAPLANE REMARKS: Attended continuously. Wildlife and birds on and in vicinity of seaplane base. Transient public dock SW corner.

KAARUK N67°40.04' W149°49.50'
RCO 122.4 (FAIRBANKS RADIO)

FAIRBANKS
L–4J

KACHEMAK N59°38.48' W151°30.02' NOTAM FILE HOM.
NDB (HW) 277 ACE at Homer. 17E.

SEWARD
H–1B, 2K, L–1A, 2I, 3D, 4F