

**KENAI MUNI** (ENA)(PAEN) 0 N UTC-9(-8DT) N60°34.40' W151°14.69'  
100 B Class I, ARFF Index A NOTAM FILE ENA

**ANCHORAGE**  
H-1B, 2K, L-1A, 3D, 4F  
IAP, DIAP, AD

**RWY 02L-20R:** H7855X150 (ASPH-GRVD) S-75, D-150, 2D-250  
PCR 461 F/B/X/U HIRL  
**RWY 02L:** REIL. VASI(V4L)—GA 3.0° TCH 53'. RVR-R Thld dsplcd 280'. Rgt tfc.  
**RWY 20R:** MALSR. VASI(V4L)—GA 3.0° TCH 51'. RVR-T

**RWY 02R-20L:** 1980X75 (GRVL)

**RUNWAY DECLARED DISTANCE INFORMATION**

**RWY 02L:**TORA-7855 TODA-7855 ASDA-7855 LDA-7575  
**RWY 20R:**TORA-7855 TODA-7855 ASDA-7575 LDA-7575

**SERVICE:** S2 **FUEL** 100LL, JET A **LGT** ACTVT REIL Rwy 02L; VASI Rwy 02L & 20R—CTAF. When twr clsd ACTVT and incr instst HIRL Rwy 02L-20R—Kenai FSS. When twr clsd ACTVT MALSR Rwy 20R—CTAF.

**NOISE:** Rwy 02W arr and Rwy 20W make dep fnl apch and cross wind turns S of beachline unless auth by ATC. Water ldg area and twy chnl not vsb fm twr.

**AIRPORT REMARKS:** Attended Mon-Fri 1700-0200Z†. Fuel avbl H24 with credit card—907-283-4542. Birds 10 NM radius spring-fall. Exc wx dvrsn unskd actv on 12,500 lbs 48 hr PPR. Ptns of trml ramp, Twy G and H not vsb fm ATCT. Rwy 02R outlined with cones. Rwy 20L outlined with cones. Tsnt and coml tie down slips avbl end of water canal. Tsnt prkg S trml ramp; hel prkg N trml ramp. Rwy 02R-20L not avbl for sked or unskd acr ops more than 30 pax seats. Lndg fee ovr 4000 lb. Twy A, B & E PCN 48; Twy C PCN 59; Twy F PCN 43; Twy D, J, K & L PCN 34. Arpt sand gradation lgr than FAA rcmdd see AC150/5200-30.

**AIRPORT MANAGER:** 907-283-7951

**WEATHER DATA SOURCES:** ASOS 133.35 (907) 283-6513. LAWRS. (WX CAM)

**COMMUNICATIONS:** CTAF 121.3 ATIS 133.35

FSS ENA (KENAI)

**KENAI RADIO** 121.3 121.5 122.65 243.0 (LAA 121.3 when twr clsd)

Ⓡ **ANCHORAGE CENTER APP/DEP CON** 125.7 379.1

**TOWER** 121.3 (1500-0700Z† May 1-Sep 30; 1600-0600Z† Oct 1-Apr 30) **GND CON** 118.75

**AIRSPACE:** CLASS D svc 1500-0700Z† May 1-Sep 30, 1600-0600Z† Oct 1-Apr 30; other times CLASS E.

**RADIO AIDS TO NAVIGATION:** NOTAM FILE ENA.

(H) (H) **VOR/DME** 117.6 ENA Chan 123 N60°36.88' W151°11.71' 192° 2.9 NM to fld. 115/19E.

VOR unusable:  
348°-015° byd 20 NM

DME unusable:  
355°-041° byd 35 NM blo 2,000'

**ILS/DME** 108.9 I-ENA Chan 26 Rwy 20R. Class IE.

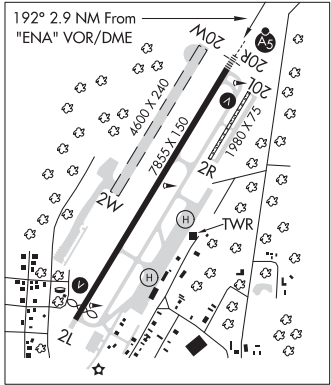
**COMM/NAV/WEATHER REMARKS:** Kenai FSS lcl 283-7211. For a toll free call to Kenai FSS dial 1-866-864-1737. Wx avbl from Kenai twr ATIS or from FSS when Kenai twr clsd.

**WATERWAY 02W-20W:** 4600X240 (WATER)

**WATERWAY 20W:** Rgt tfc.

**SEAPLANE REMARKS:** Waterway 02W-20W clsd to ops Nov-Apr. SPB ctld by Kenai ATCT durg ops hrs. When Kenai ATCT clsd wx avbl fm Kenai ATIS or Kenai FSS. Noise abatement proc in efct—amgr. TPA: Rwy 02W/20W 500' AGL. Rwy 20W rgt tfc. Water ldg area and twy chnl not vsb fm ATCT.

**HELIPAD H1:** H55X55 (ASPH)  
**HELIPAD H2:** H55X55 (ASPH)



**TREASURE CHEST** (AA16) PVT 5 NNW UTC-9(-8DT) N60°37.49' W151°17.67'  
125 TPA-825(700) NOTAM FILE Not insp.

**SEWARD**

**RWY 16-34:** 2700X100 (GRVL)

**RWY 34:** Rgt tfc.

**RWY 02-20:** 1370X100 (GRVL)

**AIRPORT REMARKS:** Unattended. Rwy 16-34 not mntnd. Ski ops at your own risk. Cond rpt—amgr.

**AIRPORT MANAGER:** 907-394-3579

**COMMUNICATIONS:** CTAF 121.3

**COMM/NAV/WEATHER REMARKS:** Ops annnc intrns to Salamatoff/Arness tfc—122.7. Ops in Class D/E asp trsn to Treasure Chest—Kenai ATCT CTAF.

**KENAI RIVER AIRPARK** (See SOLDOTNA on page 226)