

LAZY BAY

ALITAK SPB (ALZ) 0 S UTC-9(-8DT) N56°53.77' W154°14.81'

KODIAK

00 NOTAM FILE ENA

WATERWAY 12W-30W: 6000X150 (WATER)

WATERWAY 17W-35W: 4000X150 (WATER)

SEAPLANE REMARKS: Unattended. Bird act invof arpt. E-W pvlg winds, E winds subject to swells. Grvl beaching area E of cannery. Beaching area dock, hazus. Ltd summer para gldr act.

AIRPORT MANAGER: 907-771-4800

COMMUNICATIONS: CTAF 122.8

RADIO AIDS TO NAVIGATION: NOTAM FILE ADQ.

KODIAK (H) (H) VORW/DME 117.1 ODK Chan 118 N57°46.50' W152°20.39' 216° 81.5 NM to fld. 133/14E.

VOR unusable:

190°-310° byd 15 NM blo 12,000'

DME unusable:

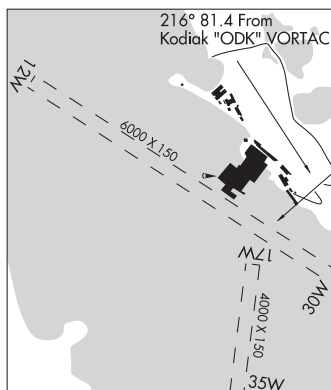
154°-265° byd 15 NM blo 12,000'

266°-305°

306°-341° byd 15 NM blo 12,000'

COMM/NAV/WEATHER REMARKS: For a toll free call to Kenai FSS dial

1-866-864-1737.



LEVEL ISLAND N56°28.06' W133°04.99' NOTAM FILE SIT.

JUNEAU

(H) (H) **VORW/DME** 116.5 LVD Chan 112 229° 19.3 NM to Point Baker. 98/20E.

H-1C, L-1C

VOR unusable:

020°-050° byd 37 NM

270°-300° byd 25 NM blo 10,000'

301°-321° byd 25 NM blo 7,000'

wx cam avbl at <https://weathercams.faa.gov>

DME unusable:

020°-050° byd 25 NM blo 11,000'

020°-050° byd 37 NM

105°-120° byd 29 NM blo 10,000'

121°-135° byd 35 NM blo 7,000'

270°-300° byd 25 NM blo 10,000'

301°-321° byd 25 NM blo 7,000'

345°-350° byd 36 NM blo 8,000'

RCO 122.3 (SITKA RADIO)

LEVELOCK (9Z8) 1 NNW UTC-9(-8DT) N59°07.63' W156°51.59'

KODIAK

56 B NOTAM FILE ENA

L-2I, 3C

RWY 01-19: 3284X60 (GRVL-DIRT) MIRL

RWY 01: Brush.

RWY 19: Brush.

SERVICE: LGT ACTIVATE MIRL Rwy 01-19 and rotating bcn—CTAF.

AIRPORT REMARKS: Unattended. Rwy condition not monitored. Recommend visual inspection prior to ldg. Rwy 01-19 and shoulders soft and muddy when wet. Multiple 2"-4" ruts on rwy edges and circular ruts near rwy thlds. Windsocks in soft soil, may be unreliable. Safety areas byd thlds sinking soft sand use only as emergency overrun.

AIRPORT MANAGER: 907-246-3325

COMMUNICATIONS: CTAF 122.9 **UNICOM** 122.95

RADIO AIDS TO NAVIGATION: NOTAM FILE AKN.

KING SALMON (H) (H) VORTACW 112.8 AKN Chan 75 N58°43.48' W156°45.14' 336° 24.4 NM to fld. 95/16E.

TACAN antenna offset 150' se

TACAN AZIMUTH unusable:

130°-140° byd 13 NM blo 4,000'

130°-140° byd 30 NM

332°-348° byd 19 NM blo 5,000'

DME unusable:

332°-348° byd 19 NM blo 5,000'

COMM/NAV/WEATHER REMARKS: For a toll free call to Kenai FSS dial 1-866-864-1737.

