

## NOORVIK

**ROBERT/BOB/CURTIS MEML** (D76)(PFNO) 1 SE UTC-9(-8DT) N66°49.05' W161°01.34'

**NOME**

55 B NOTAM FILE D76

H-1A, L-4I

**RWY 06-24:** 4000X100 (GRVL-DIRT) MIRL

IAP

**RWY 06:** PAPI(P4R)—GA 3.0° TCH 25'.

**SERVICE:** LGT ACTVT PAPI Rwy 06; MIRL Rwy 06-24—CTAF.

**AIRPORT REMARKS:** Unattended. Rwy cond unmntd; rcmd visual insp bfr Indg. Rwy 06-24 mkd with lgts and plastic mkr. Winter snow removal—mnt CTAF. Cold temperature airport. Altitude correction required at or below -23C.

**AIRPORT MANAGER:** 907-442-3147

**WEATHER DATA SOURCES:** AWOS-3P 120.00 (907) 636-2010.

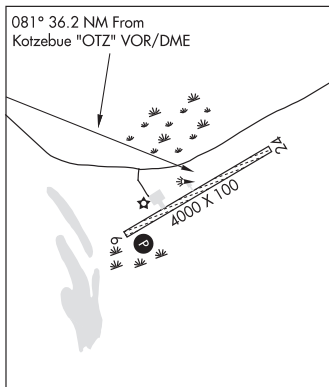
**COMMUNICATIONS:** CTAF 122.7

Ⓡ **ANCHORAGE CENTER APP/DEP CON** 119.2

**RADIO AIDS TO NAVIGATION:** NOTAM FILE OTZ.

**KOTZBUE (H) (H) VOR/DME** 115.7 OTZ Chan 104 N66°53.14' W162°32.40' 081° 36.2 NM to fld. 121/15E.

**COMM/NAV/WEATHER REMARKS:** For LC to Kotzebue FSS dial 907-442-3310. For a toll free call to Kotzebue FSS dial 1-866-478-7460. For a toll free call to Fairbanks FSS dial 1-866-248-6516



## NORTH POLE

**AIRWAY** (5AK3) PVT 2 NE UTC-9(-8DT) N64°46.39' W147°20.03'

**FAIRBANKS**

480 NOTAM FILE

**RWY 15-33:** 2550X45 (GRVL)

**RWY 15:** Road.

**RWY 33:** Trees.

**AIRPORT REMARKS:** Unattended. Pvt arpt; ops members only. Lnd at your own risk. Tsnt PPR—Amgr or property owner. Not mntnd; fac na. Rwy cond unmnt; rcmd visual insp bfr use. CTN: Ops fm adj gravel pit, pond and timber trails rwy. Ski eqpt ops durg fall, winter and spring. Rwy 15-33 packed snow winter months. Turnaround N and S end; midfield turnaround NA. Wind indicator: Rwy 33 apch end.

**AIRPORT MANAGER:** 907-347-1460

**COMMUNICATIONS:** CTAF 122.8

**COMM/NAV/WEATHER REMARKS:** For a toll free call to Fairbanks FSS dial 1-866-248-6516, for a local call to Fairbanks FSS dial 907-474-0137.

**BRADLEY SKY-RANCH** (95Z) 1 NW UTC-9(-8DT) N64°45.55' W147°23.26'

**FAIRBANKS**

483 NOTAM FILE FAI

L-3A, 3D, 4J

**RWY 15-33:** 4100X60 (GRVL-DIRT)

**RWY 15:** Road.

**RWY 33:** Road. Rgt tfc.

**NOISE:** Rwy 15 arr mntn max alt.

**AIRPORT REMARKS:** Attended daylight hours. Rcmd visual insp bfr Indg. Rwy 15-33 roads x apchs both ends. Sfc snow mntnd Nov-Apr. Ultralight and glider activity on and invof arpt. Rwy 15-33 edge markings NA.

**AIRPORT MANAGER:** 907-302-0261

**COMMUNICATIONS:** CTAF/UNICOM 122.8

**SUAIS** 125.3 126.3 (1-800-758-8723).

**RADIO AIDS TO NAVIGATION:** NOTAM FILE FAI.

**FAIRBANKS (H) (H) VORTACW** 108.6 FAI Chan 23 N64°48.00' W148°00.72' 077° 16.2 NM to fld. 1526/21E.

**TACAN AZIMUTH** unusable:

065°-100° byd 30 NM

270°-330° byd 10 NM blo 10,000'

270°-330° byd 30 NM

**COMM/NAV/WEATHER REMARKS:** For a toll free call to Fairbanks FSS dial 1-866-248-6516, for a local call to Fairbanks FSS dial 907-474-0137.

