

TATALINA LRRS (TLJ)(PATL) AF 7 S UTC-9(-8DT) N62°53.69' W155°58.68'

MC GRATH

933 NOTAM FILE PATL Not insp.

L-3C

RWY 17-35: 3820X150 (GRVL) 1.1% up N

DIAP

RWY 17: REIL. PAPI(P2R)—GA 5.0° TCH 52'. Hill.

RWY 35: REIL. PAPI(P2L)—GA 3.0° TCH 40'.

SERVICE: **MILITARY**—LGT Opr consly. PAPI Rwy 17 baffled and unusbl byd 5° right of cntrin.

MILITARY REMARKS: Attended Mon-Fri 1700-0200Z, CLOSED wkend and hols. Rwy 17 and 35 2 X 3 ft orange mkr. Rwy 17-35 lateral slope; W edge higher than E edge. Exp turb both ends. Prkg fac restrd to two C123. Aft initial ctc exp 30 min dla cond rpt. USAF fac; civ acft Indg pmt rqrd bfr arr D907-552-5282/C907-552-5282 or mail attn: 11 AF amgr 10471 20th Street Suite 218 Elmendorf AFD, AK, 99506. PPR all ops; mnm 1hr prior to dep for sit and no earlier than day travel D317-552-1106/1040/C907-552-1106/1040. Pax req coord bfr non emerg travel to site -

D317-552-4935/1089/C907-552-4935/1089.

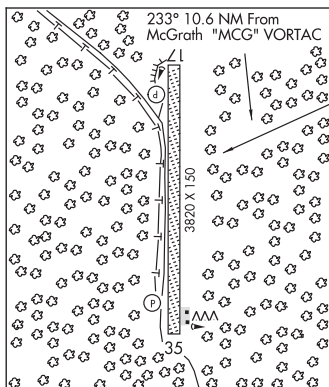
AIRPORT MANAGER: 907-552-7610

WEATHER DATA SOURCES: AWOS-3 (907) 552-1106 (WX CAM)

COMMUNICATIONS: CTAF 126.2

RCO 122.3 (KENAI RADIO)

RADIO AIDS TO NAVIGATION: NOTAM FILE MCG.



MC GRATH (H) (H) VORTACW 115.5 MCG Chan 102 N62°57.06' W155°36.68' 233° 10.6 NM to fld. 344/19E.

TACAN AZIMUTH unusable:

014°-019° byd 19 NM blo 7,000'
 040°-050° byd 21 NM blo 5,000'
 144°-194° byd 6 NM blo 9,000'
 195°-223° byd 28 NM blo 6,000'
 224°-261° byd 12 NM blo 10,000'
 262°-294° byd 25 NM blo 7,000'
 295°-314° byd 21 NM blo 8,000'

DME unusable:

014°-019° byd 19 NM blo 7,000'
 040°-050° byd 21 NM blo 5,000'
 144°-194° byd 6 NM blo 9,000'
 195°-223° byd 28 NM blo 6,000'
 224°-261° byd 12 NM blo 10,000'
 262°-294° byd 25 NM blo 7,000'
 295°-314° byd 21 NM blo 8,000'

VOR unusable:

171°-260° byd 6 NM
 171°-260° within 6 NM blo 4,000'
 261°-170° byd 20 NM

COMM/NAV/WEATHER REMARKS: For a toll free call to Kenai FSS dial 1-866-864-1737.