

**VALDEZ PIONEER FLD** (VDZ)(PAVD) 3 E UTC-9(-8DT) N61°08.05' W146°14.69'

128 B LRA ARFF Index—See Remarks NOTAM FILE VDZ

**RWY 06-24:** H6500X150 (ASPH-GRVD) S-107, D-187, 2D-346

PCR 407 F/AX/T HIRL 1.1% up E

**RWY 06:** MALSR. PAPI(P4L)—GA 3.0° TCH 29'. Trees. Rgt tfc.**RWY 24:** REIL. Trees.**RUNWAY DECLARED DISTANCE INFORMATION****RWY 06:** TORA-6500 TODA-6500 ASDA-6500 LDA-6500**RWY 24:** TORA-6500 TODA-6500 ASDA-6500 LDA-6500**SERVICE:** S2 **FUEL** 100LL, JET A **LGT ACTVT** MALSR Rwy 06; REIL Rwy 24; PAPI Rwy 06; HIRL Rwy 06-24—CTAF.**AIRPORT REMARKS:** Attended Mon-Fri 1500-0330Z‡, Sat-Sun

1700-0330Z‡. Fuel A: PPR - 907-834-6933. Maint hrs Mon-Fri

1500-0330Z‡; Sat-Sun 1700-0330Z‡. Cold temperature airport.

Altitude correction required at or below -11C. Alert: durg strong N wind;

midfld and E end rwy wind may be much hydr than AWOS indcd. Class I, ARFF Index: clsd to acr ops more than 30 pax seats exc 24 hr PPR

in writing—AMGR PO Box 507 Valdez, AK 99686; FAX

907-835-5849. Arpt sand lgr than FAA rcmd/see AC 150/5200-30.

1675 x 200 ft SW ptn of ramp not mntnd Nov 1 to Apr 15. Alert: See

Special Notices—Port Valdez Area.

**AIRPORT MANAGER:** 907-835-5658**WEATHER DATA SOURCES:** AWOS-3P 118.8 (907) 835-5578. (WX CAM)**COMMUNICATIONS:** CTAF 122.9

RCO 122.2 (JUNEAU RADIO)

**ANCHORAGE CENTER APP/DEP CON** 119.3 269.4**RADIO AIDS TO NAVIGATION:** NOTAM FILE VDZ.**MINERAL CREEK NDB (MHW)** 524 MNL N61°07.45' W146°21.13' 060° 3.2 NM to fld. 21/19E.

NDB unusable:

320°-010° byd 15 NM

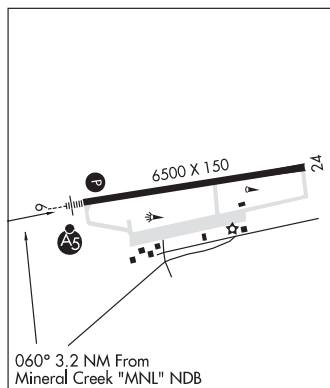
**LDA/DME** 109.5 I-VDZ Chan 32 Rwy 06. LOC unusable byd 10° left of course; unusable byd 25° rgt of course; byd

11.2 NM blw 4,635'. DME unusable byd 10° left of course; unusable byd 25° rgt of course; byd 11.2 NM blw 4,635'.

**COMM/NAV/WEATHER REMARKS:** For a toll free call to Juneau FSS dial 1-866-297-2236.**ANCHORAGE**

H-1B, L-1A, 3E, 4H

IAP

**VALLEY FLYING CROWN** (See WASILLA on page 258)**VENETIE** (VEE)(PAVE) 1 E UTC-9(-8DT) N67°00.52' W146°21.98'

574 B NOTAM FILE FAI

**RWY 04-22:** 4000X75 (GRVL) MIRL**RWY 04:** Road.**RWY 22:** Trees.**SERVICE:** LGT ACTIVATE MIRL Rwy 04-22 and rot bcn—CTAF. Rotating bcn OTS indef. Twy lgts OTS indef.**AIRPORT REMARKS:** Unattended. Maint in winter variable. Rwy 04-22 sfc slippery when wet, sfc uneven and sparsely graveled. Rwy 04 road transits rwy approximately 300' from thld. PPR before landing phone 907-849-8165. Construction equipment and persons operating on and infov rwy.**AIRPORT MANAGER:** 907-849-8165**COMMUNICATIONS:** CTAF 122.9Ⓡ **ANCHORAGE CENTER APP/DEP CON** 135.0**RADIO AIDS TO NAVIGATION:** NOTAM FILE FYU.**FORT YUKON (H) (H) VORTACW** 114.4 FYU Chan 91 N66°34.46'

W145°16.60' 296° 36.8 NM to fld. 449/20E.

VOR unusable:

001°-360° byd 15 NM

249°-259° byd 10 NM blo 4,900'

TACAN AZIMUTH unusable:

280°-300° byd 35 NM blo 2,500'

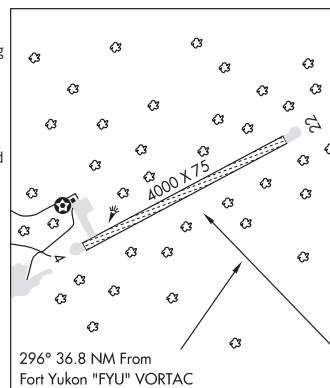
DME unusable:

280°-300° byd 35 NM blo 2,500'

**COMM/NAV/WEATHER REMARKS:** For a toll free call to Fairbanks FSS dial 1-866-248-6516.**FAIRBANKS**

H-1B, L-4J

IAP

**VISNAW LAKE SPB** (See WASILLA on page 258)