

BEAVER (WBQ)(PAWB) 0 N UTC-9(-8DT) N66°21.73' W147°24.39'
 365 B NOTAM FILE FAI
 RWY 05-23: 3934X75 (GRVL-DIRT) MIRL

FAIRBANKS
 L-4J
 IAP

RWY 05: Trees.

RWY 23: Trees.

SERVICE: LGT ACTIVATE MIRL Rwy 05-23 and rotating bcn—CTAF.

AIRPORT REMARKS: Unattended. Rwy cond not monitored, recommend visual inspection prior to landing. Snow removal ops dur winter—monitor CTAF.

Active road transits rwy 1000' from Rwy 05 thld.

AIRPORT MANAGER: (907) 451-5280

COMMUNICATIONS: CTAF 122.9

FORT YUKON RCO 122.05 (FAIRBANKS RADIO)

YUKON RIVER BRIDGE RCO 122.15 (FAIRBANKS RADIO)

RADIO AIDS TO NAVIGATION: NOTAM FILE FYU.

FORT YUKON (H) (H) VORTACW 114.4 FYU Chan 91 N66°34.46'
 W145°16.60' 237° 52.8 NM to fld. 449/20E.

VOR unusable:

001°-360° byd 15 NM

249°-259° byd 10 NM blo 4,900'

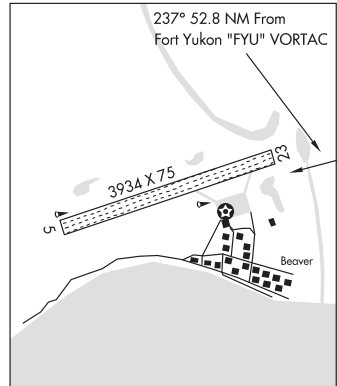
TACAN AZIMUTH unusable:

280°-300° byd 35 NM blo 2,500'

DME unusable:

280°-300° byd 35 NM blo 2,500'

COMM/NAV/WEATHER REMARKS: For a toll free call to Fairbanks FSS dial 1-866-248-6516.



BEAVER LAKE SPB (See BIG LAKE on page 62)

BELL ISLAND HOT SPRINGS SPB (KBE) PVT 0 SW UTC-9(-8DT) N55°55.74' W131°34.30'

KETCHIKAN

00 NOTAM FILE KTN

WATERWAY NE-SW: 10600X2600 (WATER)

SEAPLANE REMARKS: Attended summer daylight. Dock. Private facility no service offered to the public.

COMMUNICATIONS: CTAF 122.9

COMM/NAV/WEATHER REMARKS: For a LC to Ketchikan FSS dial 225-9481. For a LC to Juneau FSS dial 789-7380.