

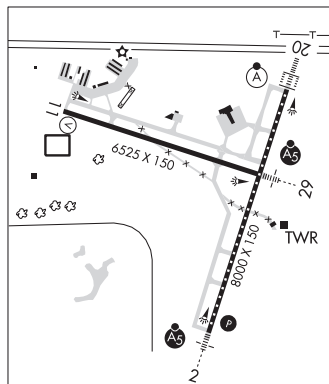
**BLOOMINGTON/NORMAL****CENTRAL IL RGNL/BLOOMINGTON-NORMAL** (BMI)(KBMI) 3 E UTC-6(-5DT) N40°28.63'**CHICAGO**  
H-5E, L-27C  
IAP, AD

W88°54.96'

871 B ARFF Index—See Remarks NOTAM FILE BMI

**RWY 02-20:** H8000X150 (CONC-GRVD) S-120, D-211, 2S-175, 2D-322, 2D/2D2-753 PCR 700 R/D/W/T HIRL CL**RWY 02:** MALSR. PAPI(P4R)—GA 3.0° TCH 75'. RVR-TMR**RWY 20:** ALSF2. TDZL. RVR-TMR P-line.**RWY 11-29:** H6525X150 (ASPH-CONC-GRVD) S-120, D-216, 2S-175, 2D-349, 2D/2D2-814 PCR 700 R/C/W/T HIRL**RWY 11:** VASI(V4R)—GA 3.0° TCH 43'. RVR-R**RWY 29:** MALSR. RVR-T**LAND AND HOLD-SHORT OPERATIONS**

LDG RWY	HOLD-SHORT POINT	AVBL LDG DIST
RWY 02	11-29	4600
RWY 11	02-20	6200

**RUNWAY DECLARED DISTANCE INFORMATION****RWY 02:** TORA-8000 TODA-8000 ASDA-8000 LDA-8000**RWY 11:** TORA-6525 TODA-6525 ASDA-6525 LDA-6525**RWY 20:** TORA-8000 TODA-8000 ASDA-8000 LDA-8000**RWY 29:** TORA-6525 TODA-6525 ASDA-6525 LDA-6525**SERVICE:** S4 **FUEL** 100LL, JET A **OX 4** **LGT** Actvt MALSR Rwy 02 and 29; TDZ Rwy 20; cntIn 02-20; PAPI Rwy 02; HIRL Rwy 02-20 and 11-29—CTAF. ALSF avbl when ATCT open. Rwy end 20: When ATCT clsd ALSF2 opr as SSALR.**AIRPORT REMARKS:** Attended 1000-0600Z $\ddagger$ . Birds on and invof arpt. Arpt ops H24-309-834-7396. Snow removal ops winter months; when ATCT clsd mnt CTAF. When ATCT clsd Indg/tkof announce intentions on CTAF. Rwy 11-29: SE end of 565 ft conc; rmg 5960 ft asph. Class I, ARFF Index B. 48 hr PPR for unskd acr ops more than 30 pax seats-amgr. Rwy 20 ALSF2 operates as SSALR when twr clsd.**AIRPORT MANAGER:** 309-663-7383**WEATHER DATA SOURCES:** AWOS-3PT 135.35 (309) 661-9478. LAWRS.**COMMUNICATIONS:** CTAF 124.6 ATIS 119.575 UNICOM 122.95① **SAINT LOUIS APP/DEP CON** 128.725**TOWER** 124.6 (1200-0400Z $\ddagger$ ) **GND CON** 121.65**AIRSPACE:** CLASS D svc 1200-0400Z $\ddagger$ ; other times CLASS G.**RADIO AIDS TO NAVIGATION:** NOTAM FILE BMI.**EGROW NDB (LOMW)** 334 LH N40°33.62' W88°52.48' 204° 5.3 NM to fld. 772/3W.**ILS/DME** 111.55 I-TXN Chan 52(Y) Rwy 02. Class IE. ILS/DME unmonitored when twr clsd. Glideslope unusable for cpd apchs blw 1,100'. Msl.**ILS/DME** 111.55 I-LHJ Chan 52(Y) Rwy 20. Class IIE. LOM EGROW NDB. Unmonitored when ATCT clsd. Cat II ILS not avbl when twr clsd.**ILS/DME** 110.95 I-BMI Chan 46(Y) Rwy 29. Class IE. Unmonitored when ATCT closed. Localizer backcourse unusable byd 15 NM.**BOLINGBROOK'S CLOW INTL** (1C5) 0 NW UTC-6(-5DT) N41°41.76' W88°07.77'**CHICAGO**  
COPTER  
L-28H, A  
IAP

675 B TPA-1505(830) NOTAM FILE IKK

**RWY 18-36:** H3360X75 (ASPH) S-12.5 MIRL 0.5% up N**RWY 18:** Tree.**RWY 36:** Tree.**SERVICE:** S4 **FUEL** 100LL, JET A **LGT** MIRL Rwy 18-36 preset low intst dusk-dawn, to incr intst—CTAF.**AIRPORT REMARKS:** Attended 1300-0000Z $\ddagger$ . Wildlife on and invof arpt. No TGL; full stop ldg only. Twy 20 ft wide; large acft consider back-taxi. Use Rwy 18 in calm wnd or drct crosswinds. Restaurant on arpt.**AIRPORT MANAGER:** 630-378-0479**COMMUNICATIONS:** CTAF 122.9① **CHICAGO APP/DEP CON** 119.35**CLEARANCE DELIVERY PHONE:** For CD ctc Chicago Apch at 847-289-0926.**RADIO AIDS TO NAVIGATION:** NOTAM FILE JOT.**JOLIET (H) (H) VOR/DME** 112.3 JOT Chan 70 N41°32.79'

W88°19.10' 041° 12.4 NM to fld. 591/2E.

VOR unusable:

072°-090° byd 34 NM blo 3,000'

**COMM/NAV/WEATHER REMARKS:** Flt school ops only - 123.5