

---

**CRAWFORD CO** (See ROBINSON on page 82)
 

---

**CUSHING FLD LTD** (See NEWARK on page 75)
 

---

**DACY** (See HARVARD on page 63)
 

---

**DANVILLE**
**VERMILION RGNL** (DNY)(KDNV) 4 NE UTC-6(-5DT) N40°11.99' W87°35.71'

**CHICAGO**

697 B NOTAM FILE DNV

H-5E, L-27D

**RWY 03-21:** H6006X100 (ASPH-PFC) S-50, D-75, 2S-95 HIRL

IAP

0.8% up NE

**RWY 03:** VASI(V4L)—GA 3.0° TCH 41'. Tree.

**RWY 21:** MALSR. PAPI(P4L)—GA 3.0° TCH 46'.

**RWY 16-34:** H3999X100 (ASPH-GRVD) S-40, D-50 MIRL

0.6% up N

**RWY 16:** REIL. VASI(V2L)—GA 3.0° TCH 23'.

**RWY 34:** REIL. VASI(V2L)—GA 3.0° TCH 14'.

**RWY 12-30:** 2500X150 (TURF) 0.3% up NW

**SERVICE:** S4 FUEL 100LL, JET A LGT HIRL Rwy 03-21 preset low intst

- to incr intst &amp; actvt MALSR Rwy 21; REIL Rwys 16 &amp; 34; VASI Rwys

03, 16 &amp; 34; PAPI Rwy 21; MIRL Rwy 16-34—CTAF.

**AIRPORT REMARKS:** Attended 1300-0400Z†. Extv glider ops weekends. Rwy

12-30 seasonal rwy Nov 1-May 1; Ctc amgr 217-442-4624. Air

cargo Part 135 ft depts ngly 0400Z†, arrs dly 1200Z† Mon-Sat.

**AIRPORT MANAGER:** 217-442-4624

**WEATHER DATA SOURCES:** AWOS-3 119.275 (217) 442-4660.

**COMMUNICATIONS:** CTAF/UNICOM 122.7

Ⓡ CHAMPAIGN APP/DEP CON 121.35 (1200-0500Z† other times ctc)

Ⓡ CHICAGO CENTER APP/DEP CON 121.35

CLNC DEL 121.7

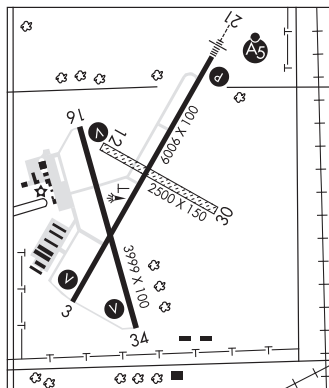
**CLEARANCE DELIVERY PHONE:** For CD if unable via radio ctc Champaign Apch at 217-355-4071, when Apch clsd ctc Chicago

ARTCC at 630-906-8921

**RADIO AIDS TO NAVIGATION:** NOTAM FILE DNV.

**DANVILLE (L) TACAN** Chan 47 DNV (111.0) N40°17.63' W87°33.44' 195° 5.9 NM to fld. 699/2E.

**JULIP NDB (LOMW)** 332 DN N40°17.38' W87°31.80' 209° 6.2 NM to fld. 706/0E.

**ILS 108.5 I-DNV** Rwy 21. Class IE. LOM JULIP NDB. Unmonitored.



---

**DANVILLE** N40°17.63' W87°33.44' NOTAM FILE DNV.

**CHICAGO**

(L) TACAN 111.0 DNV Chan 47 195° 5.9 NM to Vermilion Rgnl. 699/2E.

H-5E, 4H, L-27D