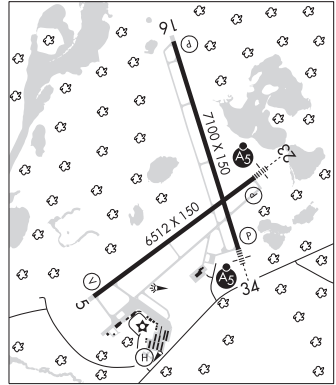


BRainerd Lakes RGNL (BRD)(KBRD) 3 NE UTC-6(-5DT) N46°24.25' W94°08.03'
 1232 B Class I, ARFF Index A NOTAM FILE BRD
RWY 16-34: H7100X150 (CONC-GRVD) S-75, D-125, 2D-220
 PCN 49 R/B/W/U HIRL

TWIN CITIES
 H-21, L-14H
 IAP, AD

RWY 16: REIL. PAPI(P4L)—GA 3.0° TCH 45'.
RWY 34: MALSR. PAPI(P4R)—GA 3.0° TCH 46'. Trees.
RWY 05-23: H6512X150 (CONC-GRVD) S-75, D-125, 2D-220
 PCN 49 R/B/W/U HIRL
RWY 05: REIL. VASI(V4L)—GA 3.0° TCH 45'. Tree.
RWY 23: MALSR. PAPI(P4L)—GA 3.0° TCH 50'. Trees.
SERVICE: S4 FUEL 100LL, JET A OX1, 3 LGT HIRL Rwy 05-23 and Rwy 16-34 preset on low ints, to increase ints and ACTIVATE REIL Rwy 05 and Rwy 16, and MALSR Rwy 23 and Rwy 34—CTAF. Rwy 23 PAPI unusable byd 9° right of course.



AIRPORT REMARKS: Attended Jul-Oct 1100-0500Z†, Nov-Jun 1300-0500Z†. For attendance other hours, see current phone listing in pilots lounge, 218-829-3398. Deer and gulls on and invof arpt. PPR for unscheduled air carrier ops with more than 30 passenger seats call arpt manager 218-825-2166 between 1400-2300Z†. Air carrier ops involving acft with more than 30 passengers are not authorized in excess of 15 minutes before or after scheduled arrival/departure times without prior coordination with arpt manager and confirmation that ARFF is avbl prior to ldg or tkf.

AIRPORT MANAGER: 218-825-2166
WEATHER DATA SOURCES: ASOS 126.775 (218) 828-3314.
COMMUNICATIONS: CTAF/UNICOM 122.7
 RCO 122.2 (PRINCETON RADIO)

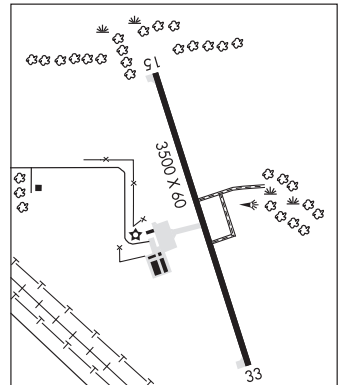
Ⓜ **MINNEAPOLIS CENTER APP/DEP CON 118.05**
CLEARANCE DELIVERY PHONE: For CD if una to ctc on FSS freq, ctc Minneapolis ARTCC at 651-463-5588.
AIRSPACE: CLASS E svc 1100-0500Z† Mon-Sat, 1200-0500Z† Sun; other times CLASS G.

RADIO AIDS TO NAVIGATION: NOTAM FILE PKD.
PARK RAPIDS (L) DME 110.6 PKD Chan 43 N46°53.89' W95°04.26' 127° 48.8 NM to fld. 1472.
LAREW NDB (MHW/LOM) 251 BR N46°27.40' W94°01.35' 233° 5.6 NM to fld. 1260/3E. NOTAM FILE BRD.
 ILS 109.9 I-RBD Rwy 23. Class IE. LOM LAREW NDB. COMLO unmonitored. Unmonitored.
 ILS/DME 109.7 I-LER Chan 34 Rwy 34. Class IB. Unmonitored.

• • • • •
HELIPAD H1: H60X60 (CONC-GRVD) PERIMETER LGTS
HELIPORT REMARKS: Helipad H1 has perimeter lgts. Rwy H1 perimeter lgts operate SS-SR.

BROOTEN MUNI/JOHN O BOHMER FLD (6D1) 1 SE UTC-6(-5DT) N45°29.85' W95°06.16' **TWIN CITIES**
 1304 B NOTAM FILE PNM **L-14H**

RWY 15-33: H3500X60 (ASPH) MIRL
SERVICE: FUEL 100LL LGT ACTIVATE or incr instst MIRL Rwy 15-33—CTAF. MIRL Rwy 15-33 preset low instst.
AIRPORT REMARKS: Unattended. Fuel: 100LL avbl H24 via credit card.
 Agriculture ops durg summer months.
AIRPORT MANAGER: 320-346-2234
COMMUNICATIONS: CTAF 122.9
CLEARANCE DELIVERY PHONE: For CD ctc Minneapolis ARTCC at 651-463-5588.



RADIO AIDS TO NAVIGATION: NOTAM FILE AXN.
ALEXANDRIA (VL) (DH) VORW/DME 115.95 AXN Chan 106(Y)
 N45°57.50' W95°13.96' 162° 28.2 NM to fld. 1367/7E.
 VOR unusable:
 045°-060° byd 30 NM blo 6,400'
 DME unusable:
 045°-060° byd 30 NM blo 6,400'
 146°-153° byd 15 NM