

WILLMAR MUNI/JOHN L RICE FLD (BDH)(KBDH) 2 W UTC-6(-5DT) N45°07.02' W95°07.76'

TWIN CITIES

1126 B TPA—2100(974) NOTAM FILE BDH

H-21, L-121, 14H

RWY 13-31: H5500X100 (ASPH) HIRL

IAF

RWY 13: MALSR. PAPI(P4R)—GA 3.0° TCH 50'.

RWY 31: REIL. PAPI(P4L)—GA 3.0° TCH 49'.

RWY 03-21: 2980X250 (TURF)

SERVICE: S4 FUEL 100LL, JET A OX 1, 2 LGT ACTVT or incr instst
MALSR Rwy 13; REIL Rwy 31; PAPI Rwy 13 and 31; HIRL Rwy
13-31—CTAF. HIRL Rwy 13-31 preset low instst SS-SR.

AIRPORT REMARKS: Attended 1400-2300Z. Fuel: A: For svc aft hrs call FBO
at 320-214-9669. 100LL: avbl H24 self svc via credit card. Rwy
03-21 not plowed winter months. Abndd arpt 1 NM east. NSTD
markings Rwy 03 and Rwy 21 mkd with yellow cones. Rwy 13-31 200
ft unusbl pavement byd rwy, both ends.

AIRPORT MANAGER: 320-894-1872

WEATHER DATA SOURCES: AWOS-3PT 118.75 (320) 235-8287.

COMMUNICATIONS: CTAF/UNICOM 122.8

RCO 122.2 (PRINCETON RADIO)

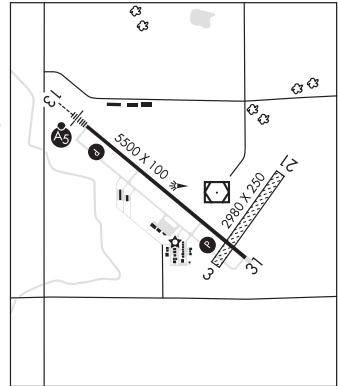
Ⓡ MINNEAPOLIS CENTER APP/DEP CON 125.5

CLEARANCE DELIVERY PHONE: For CD if una to ctc on FSS freq, ctc Minneapolis
ARTCC at 651-463-5588.

RADIO AIDS TO NAVIGATION: NOTAM FILE BDH.

(T) (T) VORW/DME 113.7 BDH Chan 84 N45°07.06' W95°07.62' at fld. 1124/4E.

ILS 109.5 I-BDH Rwy 13. Class IC.



WILLMAR N45°07.06' W95°07.62' NOTAM FILE BDH.

TWIN CITIES

(T) (T) VORW/DME 113.7 BDH Chan 84 at Willmar Muni/John L Rice Fld. 1124/4E.

L-121, 14H

RCO 122.2 (PRINCETON RADIO)

WINDOM MUNI (MWM)(KMWM) 3 N UTC-6(-5DT) N43°54.80' W95°06.56'

OMAHA

1411 B NOTAM FILE MWM

L-121

RWY 17-35: H3598X75 (CONC) S-15, D-20 MIRL(NSTD)

IAF

RWY 17: REIL. PAPI(P4L)—GA 3.0° TCH 25'.

RWY 35: REIL. PAPI(P4L)—GA 3.0° TCH 25'.

SERVICE: FUEL 100LL, JET A LGT Actvt REIL Rwy 17-35; PAPI Rwy
17 and 35; MIRL Rwy 17-35—CTAF. Rwy 17-35 nstd MIRL and
thid lgt confg for rwys served by IAPS.

AIRPORT REMARKS: Unattended. Birds on and invof arpt. Fuel avbl 24 hrs
with credit card.

AIRPORT MANAGER: 507-381-6129

WEATHER DATA SOURCES: AWOS-3PT 119.325 (507) 831-1833.

COMMUNICATIONS: CTAF 122.9

Ⓡ MINNEAPOLIS CENTER APP/DEP CON 127.1

CLEARANCE DELIVERY PHONE: For CD ctc Minneapolis ARTCC at
651-463-5588.

RADIO AIDS TO NAVIGATION: NOTAM FILE RWF.

REDWOOD FALLS (VH) (DH) VORW/DME 113.3 RWF Chan 80

N44°28.04' W95°07.69' 172° 33.2 NM to fld. 1061/7E.

DME unusable:

140°-150° byd 12 NM blo 3,000'

325°-333° byd 12 NM blo 4,500'

VOR unusable:

140°-150° byd 12 NM blo 3,000'

