

**ALLIANCE MUNI** (AIA)(KAIA) 3 SE UTC-7(-6DT) N42°03.19' W102°48.23'

CHEYENNE  
H-5A, L-12G  
IAP, AD

3931 B Class III, ARFF Index A NOTAM FILE AIA  
**RWY 12-30:** H9203X150 (ASPH-AFSC) S-98, D-285, 2D-158,  
 2D/2D2-321 PCR 39 R/B/W/T MIRL  
**RWY 12:** REIL. VASI(V4L)—GA 3.0° TCH 39'.  
**RWY 30:** MALSR. PAPI(P4L)—GA 3.0° TCH 53'.  
**RWY 17-35:** H6311X75 (ASPH) S-24, D-30 PCR 39 R/B/W/T  
**RWY 08-26:** H6190X75 (ASPH-PFC) S-36, D-48, 2D-80  
 PCR 39 R/B/W/T MIRL

**RUNWAY DECLARED DISTANCE INFORMATION**

**RWY 08:** TORA-6190 TODA-6190 ASDA-6190 LDA-6190  
**RWY 12:** TORA-9203 TODA-9203 ASDA-9203 LDA-9203  
**RWY 17:** TORA-6311 TODA-6311 ASDA-6311 LDA-6311  
**RWY 26:** TORA-6190 TODA-6190 ASDA-6190 LDA-6190  
**RWY 30:** TORA-9203 TODA-9203 ASDA-9203 LDA-9203  
**RWY 35:** TORA-6311 TODA-6311 ASDA-6311 LDA-6311

**SERVICE:** S4 FUEL 100LL, JET A LGT Actvt MALSR Rwy 30; REIL Rwy 12; VASI Rwy 12; PAPI Rwy 30; MIRL Rwy 12-30 and Rwy 08-26—CTAF.

**AIRPORT REMARKS:** Attended continuously. Migratory waterfowl on and invof arpt. Ultralight and glider ops on and invof arpt. Haying ops on interior of arpt during summer months. Rwy 08-26 designated calm wind.

Aerial spraying ops on and invof arpt. Occasional use by acft with no radio. Back taxiing. Rwy 17-35 unavbl for use by air carriers. Rwy 17-35 not avbl for sked acr opns with more than 9 psgr seats or unsked acr at least 31 psgr seats.

**AIRPORT MANAGER:** 308-762-4512

**WEATHER DATA SOURCES:** ASOS 135.075 (308) 762-1221.

**COMMUNICATIONS:** CTAF/UNICOM 123.0

RCO 122.3 (COLUMBUS RADIO)

Ⓡ DENVER CENTER APP/DEP CON 127.95

**CLEARANCE DELIVERY PHONE:** For CD if una to ctc on FSS freq, ctc Denver ARTCC at 303-651-4257.

**RADIO AIDS TO NAVIGATION:** NOTAM FILE AIA.

(VL) (DH) VOR/DME 111.8 AIA Chan 55 N42°03.34' W102°48.27' at fld. 3925/11E.

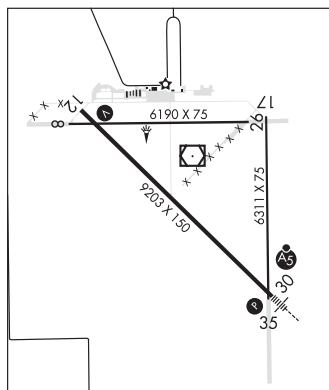
VOR unusable:

001°-058° byd 40 NM

059°-069° byd 40 NM blo 5,600'

070°-360° byd 40 NM

ILS/DME 108.35 I-BYE Chan 20(Y) Rwy 30. Class IE. Unmonitored.



**ALMA**

**ALMA MUNI** (4D9) 1 NE UTC-6(-5DT) N40°06.75' W99°20.79'

OMAHA  
L-10H  
IAP

2073 B NOTAM FILE OLU

**RWY 17-35:** H3200X60 (CONC) MIRL 0.3% up N

**RWY 17:** PAPI(P2L)—GA 3.0° TCH 40'. Road.

**RWY 35:** PAPI(P2L)—GA 3.0° TCH 40'.

**SERVICE:** FUEL 100LL LGT ACTIVATE MIRL Rwy 17-35; PAPI Rwy 17 and Rwy 35—CTAF. Beacon lgt clear and green.

**AIRPORT REMARKS:** Unattended. Self svc fuel avbl 24 hrs via credit card system. Unmarked, unlighted twr 6 NM northwest of arpt at 2458' MSL. Segmented circle concrete in ground.

**AIRPORT MANAGER:** 308-470-0563

**COMMUNICATIONS:** CTAF 122.9

Ⓡ DENVER CENTER APP/DEP CON 132.7

**CLEARANCE DELIVERY PHONE:** For CD ctc Denver ARTCC at 303-651-4257.

