

OGALLALA

SEARLE FLD (OGA)(KOGA) 2 W UTC-7(-6DT) N41°07.17' W101°46.18'

CHEYENNE  
H-5B, L-10G, 12G  
IAP

3279 B NOTAM FILE OGA  
RWY 08-26: H5102X75 (CONC) S-12.5, D-12.5 MIRL 0.3% up W  
RWY 08: PAPI(P2L)—GA 3.0° TCH 39'.  
RWY 26: PAPI(P2L)—GA 3.0° TCH 48'.  
RWY 13-31: H3700X60 (CONC) S-12.5, D-12.5 MIRL 0.9% up NW  
RWY 13: VASI(V4L)—GA 3.5° TCH 40'. Road.  
RWY 31: PAPI(P2L)—GA 3.0° TCH 40'.  
SERVICE: S4 FUEL 100LL, JET A+ OX 3 LGT ACTVT PAPI Rwy 08,  
Rwy 26 and Rwy 31; VASI Rwy 13; MIRL Rwy 13-31 and Rwy  
08-26—CTAF.

AIRPORT REMARKS: Attended Mon-Fri 1430-2330Z. For arpt attendant cell  
308-289-4954. For attendant aft hrs call 308-284-4447. Rwy 08  
calm wind rwy.

AIRPORT MANAGER: 308-284-6001  
WEATHER DATA SOURCES: AWOS-3 121.275 (308) 284-6573.  
COMMUNICATIONS: CTAF/UNICOM 122.8

OGALLALA RCO 122.2 (COLUMBUS RADIO)

Ⓡ DENVER CENTER APP/DEP CON 132.7

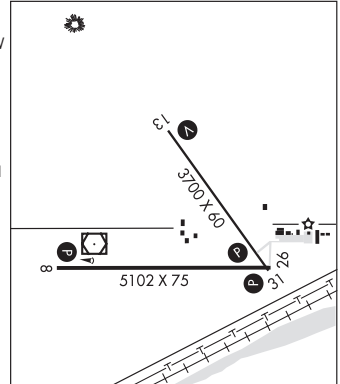
CLEARANCE DELIVERY PHONE: For CD if una to ctc on FSS freq, ctc Denver  
ARTCC at 303-651-4257.

RADIO AIDS TO NAVIGATION: NOTAM FILE OGA.

(T) (T) VORW/DME 110.2 SAE Chan 39 N41°07.15' W101°46.56' at fld. 3256/7E.

DME portion unusable:  
274°-034° byd 15 NM

NORTH PLATTE (L) (L) VORW/DME 117.4 LBF Chan 121 N41°02.92' W100°44.83' 265° 46.6 NM to fld.  
3069/11E. NOTAM FILE LBF.



OMAHA

EPPLEY AIRFIELD (OMA)(KOMA) 3 NE UTC-6(-5DT) N41°18.19' W95°53.64'

OMAHA  
H-5C, L-10I, 12I  
IAP, AD

985 B LRA Class I, ARFF Index C NOTAM FILE OMA MON Airport  
RWY 14R-32L: H9502X150 (CONC-GRVD) S-100, D-184, 2S-175,  
2D-346 PCR 848 R/C/W/T HIRL CL

RWY 14R: ALSF2. TDZL. PAPI(P4L)—GA 3.0° TCH 57'. RVR-TMR

RWY 32L: MALSR. PAPI(P4R)—GA 3.0° TCH 51'. RVR-TMR

RWY 14L-32R: H8500X150 (CONC-GRVD) S-100, D-209, 2S-175,  
2D-345 PCR 848 R/C/W/T HIRL CL

RWY 14L: MALSR. PAPI(P4L)—GA 3.0° TCH 67'. RVR-TMR

RWY 32R: ALSF2. TDZL. PAPI(P4R)—GA 3.0° TCH 55'. RVR-TMR Rgt  
tfc.

RWY 18-36: H8154X150 (CONC-GRVD) S-150, D-175, 2S-175,  
2D-260 PCR 848 R/C/W/T HIRL

RWY 18: MALSR. PAPI(P4L)—GA 3.0° TCH 52'. RVR-TM Thld dsplcd  
141'.

RWY 36: MALSR. PAPI(P4L)—GA 3.0° TCH 57'. Bridge.

RUNWAY DECLARED DISTANCE INFORMATION

RWY 14L:TORA-8500 TODA-8500 ASDA-8500 LDA-8500

RWY 14R:TORA-9502 TODA-9502 ASDA-9502 LDA-9502

RWY 18: TORA-8153 TODA-8153 ASDA-8153 LDA-8013

RWY 32L:TORA-9502 TODA-9502 ASDA-9502 LDA-9502

RWY 32R:TORA-8500 TODA-8500 ASDA-8500 LDA-8500

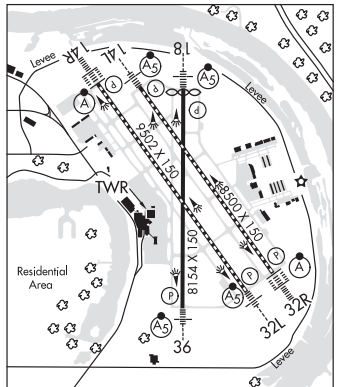
RWY 36: TORA-8153 TODA-8153 ASDA-8153 LDA-8153

SERVICE: S4 FUEL 100LL, JET A, A+ OX 1, 2, 3, 4

NOISE: Noise mitigation procedures prohibit VFR patterns for military turbojet acft between 0500-1200Z.

AIRPORT REMARKS: Attended continuously. Birds on and in/ov of arpt. Aprn trml ramp WIP hvy eqpt btn Twy A1 and Twy F1.

Holding bay at Rwy 32R clsd except acft with wingspan less than 79 ft. Holding bay at Rwy 18 clsd except acft with wingspan less than 79 ft. Holding bay at Rwy 32L clsd except acft with wingspan less than 118 ft. Aprn trml ramp btn Gate A1 & B19 clsd. Aprn trml ramp btl btn Twy F1 and Twy A1 clsd to acft wingspan more than 118 ft. Twy F1, F2 and F3 clsd to acft wingspan more than 118 ft. Flight Notification Service (ADCUS) avbl.



CONTINUED ON NEXT PAGE

## CONTINUED FROM PRECEDING PAGE

**AIRPORT MANAGER:** 402-661-8000

**WEATHER DATA SOURCES:** ASOS (402) 271-7515 LLWAS.

**COMMUNICATIONS:** D-ATIS 120.4 UNICOM 122.95

OMAHA RCO 122.6 (COLUMBUS RADIO)

OMAHA RCO 122.1R 116.3T (FORT DODGE RADIO)

Ⓡ OMAHA APP/DEP CON 135.875 (West) 124.5 (East)

OMAHA TOWER 132.1 GND CON 121.9 CLNC DEL 119.9

PDC

**AIRSPACE:** CLASS C svc ctc APP CON.

**VOR TEST FACILITY (VOT)** 109.0

**RADIO AIDS TO NAVIGATION:** NOTAM FILE FOD.

OMAHA (VH) (H) VORTAC 116.3 OVR Chan 110 N41°10.03' W95°44.21' 311° 10.8 NM to fld. 1300/8E.

ILS/DME 111.75 I-RAY Chan 54(Y) Rwy 14L. Class IE.

ILS/DME 110.3 I-OMA Chan 40 Rwy 14R. Class IIIE.

ILS/DME 110.9 I-PPY Chan 46 Rwy 18. Class IB.

ILS/DME 111.9 I-ENF Chan 56 Rwy 32L. Class IE. LOC unusable byd 025° left and right of centerline.

ILS/DME 111.15 I-EDI Chan 48(Y) Rwy 32R. Class IIIE.

ILS/DME 110.7 I-OGN Chan 44 Rwy 36. Class IE.

**MILLARD** (MLE)(KMLE) 7 SW UTC-6(-5DT) N41°11.76' W96°06.74'

1051 B NOTAM FILE MLE

OMAHA

L-101, 121

IAP

**RWY 12-30:** H3801X75 (ASPH) S-25, D-28 MIRL

**RWY 12:** REIL. PAPI(P2L)—GA 3.08° TCH 42'. Thld dspcd 212'.  
Road.

**RWY 30:** PAPI(P2L)—GA 3.08° TCH 41'.

**RUNWAY DECLARED DISTANCE INFORMATION**

**RWY 12:** TORA-3801 TODA-3801 ASDA-3801 LDA-3588

**RWY 30:** TORA-3801 TODA-3801 ASDA-3588 LDA-3801

**SERVICE:** S4 FUEL 100LL, JET A1+ OX 1, 2, 3, 4 LGT ACTIVATE

MIRL Rwy 12-30 and REIL Rwy 12—CTAF.

**NOISE:** After takeoff on Rwy 30 alter heading 20° to the right to avoid noise sensitive area.

**AIRPORT REMARKS:** Attended 1230-0300Z±. For svc after 0300Z± call 402-953-9905 or 402-690-3099. Deer on and invof arpt. Radio controlled acft occasional operation 1.7 miles SW of arpt. Self-svc fuel avbl 24 hrs with credit card. Military jet overflying at 3000' MSL. Normal calm and cross wind tkfs and lds on Rwy 12. No intersection tkfs. VFR acft requesting flight following and IFR acft should contact Omaha Apch on freq 125.4 prior to taking the rwy for clnc/traffic advisories/general info.

**AIRPORT MANAGER:** 402-661-8000

**WEATHER DATA SOURCES:** AWOS-3 118.25 (402) 895-6778.

**COMMUNICATIONS:** CTAF/UNICOM 123.0

Ⓡ OMAHA APP/DEP CON 135.875

CLNC DEL 125.4

**RADIO AIDS TO NAVIGATION:** NOTAM FILE FOD.

OMAHA (VH) (H) VORTAC 116.3 OVR Chan 110 N41°10.03' W95°44.21' 268° 17.1 NM to fld. 1300/8E.

