

BEULAH (95D) 2 SW UTC-6(-5DT) N47°15.07' W101°48.90'
1791 B NOTAM FILE GFK
RWY 10-28: H4030X60 (ASPH) S-12.5 LIRL(NSTD)

RWY 10: Fence.

RWY 28: SAVASI(S2L)—GA 3.0° TCH 25'. Road.

SERVICE: S4 FUEL 100LL LGT ACTIVATE LIRL Rwy 10-28; SAVASI Rwy 28; rotating bcn—CTAF. Rwy 10-28 NSTD LIRL 20' from edge of asph surface.

AIRPORT REMARKS: Attended Oct-Apr Mon-Sat. Amgr on call constly 710-873-4100. For fuel call 701-873-4100/2259/2311. Birds and deer on and invof arpt. Snow removal irregular, confirm winter conditions with arpt manager 701-873-4100 or 701-870-4100. Stacks 600' AGL 6 mile north unlgtd. Lgtd stack 498' AGL located 1.8 NM south. 250' AGL stack with invisible flame to 250' above stack located 8 NM NNW. Arpt located in river valley with 200' ridges surrounding arpt 1500' from thld.

AIRPORT MANAGER: 701-873-4100

COMMUNICATIONS: CTAF 122.9

CLEARANCE DELIVERY PHONE: For CD ctc Minneapolis ARTCC at 651-463-5588.

RADIO AIDS TO NAVIGATION: NOTAM FILE DIK.

DICKINSON (VH) (H) VORTACW 112.9 DIK Chan 76 N46°51.60'
W102°46.41' 045° 45.8 NM to fld. 2527/14E.

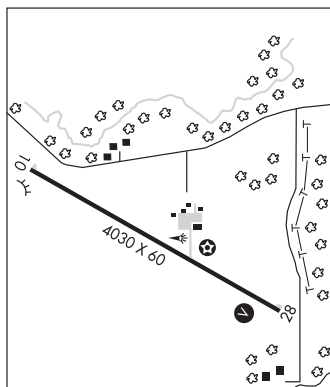
VOR unusable:

010°-020° byd 40 NM blo 18,000'

180°-230° byd 40 NM

260°-270°

BILLINGS
L-14F



BISMARCK MUNI (BIS)(KBIS) P (ARNG) 3 SE UTC-6(-5DT) N46°46.36' W100°44.74'
1661 B Class I, ARFF Index B NOTAM FILE BIS MON Airport

TWIN CITIES
H-2H, L-14F
IAP, AD

RWY 13-31: H8794X150 (ASPH-CONC-GRVD) S-130, D-180,
2D-340 PCN 100R/B/X/T HIRL

RWY 13: MALS. PAPI(P4L)—GA 3.0° TCH 58'. RVR-R Pole.

RWY 31: MALS. PAPI(P4L)—GA 3.0° TCH 48'. RVR-T

RWY 03-21: H6600X100 (ASPH-GRVD) S-130, D-180, 2D-340
PCN 26 F/A/W/T HIRL

RWY 03: REIL. PAPI(P4L)—GA 3.0° TCH 48'.

RWY 21: REIL. PAPI(P4L)—GA 3.0° TCH 48'.

RUNWAY DECLARED DISTANCE INFORMATION

RWY 03: TORA-6600 TODA-6600 ASDA-6600 LDA-6600

RWY 13: TORA-8794 TODA-8794 ASDA-8794 LDA-8794

RWY 21: TORA-6600 TODA-6600 ASDA-6600 LDA-6600

RWY 31: TORA-8794 TODA-8794 ASDA-8794 LDA-8794

SERVICE: S4 FUEL 100LL, JET A OX1, 2 LGT When twr clsd HIRL Rwy 13-31 and Rwy 03-21 preset med ints, PAPI Rwy 13, Rwy 31, Rwy 03, and Rwy 21 on, ACTIVATE MALS Rwy 13 and MALS Rwy 31 —CTAF. **MILITARY—FUEL** J8 (Mil), A+ (C701-258-5024), (NC-100LL - Fone C701-223-4754 or C701-258-5024).

AIRPORT REMARKS: Attended continuously. Deer, coyotes and birds on and invof arpt. For fuel call 701-223-4754 or 701-258-5024. Rwy 03 rwy end safety area nstd. Rwy 21 rwy end safety area nstd.

MILITARY REMARKS: ARNG Opr 1200-2130Z† Mon-Fri exc hol, PPR 24 hr PN rqr DSN 373-4071/70, C701-333-4071/70.

FW PAX trml lctd in SE hgr.

AIRPORT MANAGER: 701-355-1808

WEATHER DATA SOURCES: ASOS (701) 255-7563 LAWRS.

COMMUNICATIONS: CTAF 118.3 ATIS 119.35 UNICOM 122.95

RCO 122.2 (GRAND FORKS RADIO)

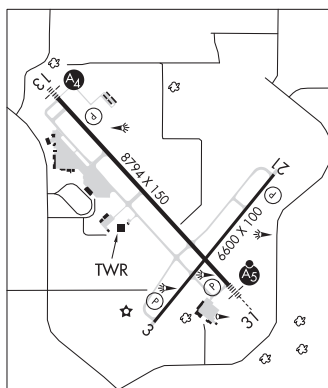
Ⓡ APP/DEP CON 126.3 (1200-0600Z†)

Ⓡ MINNEAPOLIS CENTER APP/DEP CON 135.25 (0600-1200Z†)

TOWER 118.3 (1200-0600Z†) GND CON 121.9

CLEARANCE DELIVERY PHONE: For CD if una to ctc on FSS freq, ctc Minneapolis ARTCC at 651-463-5588.

AIRSPACE: CLASS D svc 1200-0600Z†; other times CLASS E.



CONTINUED ON NEXT PAGE

CONTINUED FROM PRECEDING PAGE

RADIO AIDS TO NAVIGATION: NOTAM FILE BIS.

(VL) (DH) VORW/DME 115.65 BIS Chan 103(Y) N46°45.71' W100°39.92' 269° 3.4 NM to fld. 1854/12E.

ILS 111.5 I-BZX Rwy 13. Class IE. Unmonitored when ATCT clsd.

ILS/DME 110.3 I-BIS Chan 40 Rwy 31. Class IB. Glideslope unusable for auto pilot coupled apchs blo 2,680'.

LOC and glideslope unmonitored when ATCT clsd.

ASR (1200-0600Z†)

BOTTINEAU MUNI (DØ9) 1 E UTC-6(-5DT) N48°49.83' W100°25.04'

TWIN CITIES

1680 B NOTAM FILE GFK

L-14F

RWY 13-31: H3700X60 (ASPH) S-12.5 MIRL 0.5% up NW

RWY 13: PAPI(P2R)—GA 3.0° TCH 30'. Road.

RWY 31: PAPI(P2L)—GA 3.0° TCH 30'.

RWY 03-21: 2115X170 (TURF) 0.6% up NE

RWY 21: Road.

IAF

SERVICE: S4 FUEL 100LL LGT ACTVT MIRL Rwy 13-31 & PAPI Rwys 13 & 31—CTAF.

AIRPORT REMARKS: Attended Sat-Sun on call. For asstnc ctc amgr. Fuel:

100LL: self svc via credit card. Rwy 03-21 CLOSED winter months due to lack of snow removal. Cfm winter cond bfr use & aft major winter storm with amgr. Birds on & invof arpt. Rwys 03 & 21 mkd with black & white cones.

AIRPORT MANAGER: (701) 228-2983

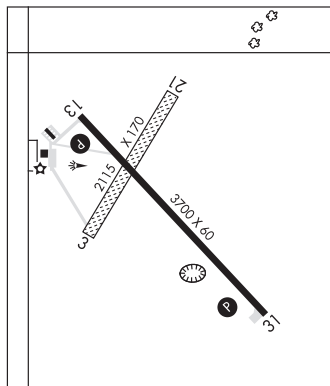
WEATHER DATA SOURCES: AWOS-3PT 118.25 (701) 228-2688.

COMMUNICATIONS: CTAF/UNICOM 122.8

Ⓡ MINOT APP/DEP CON 119.6 Opr 1300-0500Z† Mon thru Sun, other times ctc

MINNEAPOLIS CENTER 127.6

CLEARANCE DELIVERY PHONE: For CD ctc Minneapolis ARTCC at 651-463-5588.



RADIO AIDS TO NAVIGATION: NOTAM FILE MOT.

MINOT (VH) (DH) VORW/DME 117.1 MOT Chan 118 N48°15.62' W101°17.22' 032° 48.7 NM to fld. 1699/13E.

VOR unusable:

010°-020° byd 40 NM blo 8,000'

010°-020° byd 62 NM

021°-075° byd 40 NM

055°-076° byd 7 NM blo 15,000'

076°-086° byd 101 NM

076°-086° byd 40 NM blo 3,600'

076°-086° byd 61 NM blo 9,500'

087°-145° byd 40 NM

100°-125° byd 35 NM blo 3,700'

135°-204° byd 35 NM blo 4,000'

146°-156° byd 40 NM blo 4,100'

146°-156° byd 52 NM

157°-197° byd 40 NM

198°-208° byd 40 NM blo 6,000'

198°-208° byd 57 NM

205°-295° byd 35 NM blo 4,500'

209°-252° byd 40 NM

253°-263° byd 40 NM blo 6,000'

253°-263° byd 55 NM

264°-285° byd 40 NM

321°-331° byd 40 NM blo 7,000'

321°-331° byd 75 NM

329°-339° byd 7 NM blo 15,000'

DME unusable:

302°-324° byd 10 NM blo 7,100'

329°-339° byd 7 NM blo 15,000'

VOR unusable:

332°-009° byd 40 NM

COMM/NAV/WEATHER REMARKS: Minot AFB (MIB) ASR OTS for preventive maintenance Fridays 1200-1400Z†.