

NEW BEDFORD RGNL (EWB)(KEWB) 2 NW UTC-5(-4DT) N41°40.59' W70°57.47'

NEW YORK

79 B LRA Class IV, ARFF Index A NOTAM FILE EWB

H-10J, 11D, 12K, L-33D

RWY 05-23: H5400X150 (ASPH-GRVD) S-30, D-108, 2S-137,

IAP, AD

2D-195 PCR 810 F/A/X/T HIRL 0.3% up NE

RWY 05: MALSR. RVR-T Tree.

RWY 23: MALSR. PAPI(P4L)—GA 3.0° TCH 46'. RVR-R Thld dsplcd 400'. Tree.

RWY 14-32: H5002X75 (ASPH) S-33, D-48, 2D-95 PCR 930 F/A/X/T MIRL

RWY 14: PAPI(P4L)—GA 3.42° TCH 50'. Tree.

RWY 32: REIL. PAPI(P4L)—GA 3.5° TCH 50'. Trees.

SERVICE: S4 FUEL 100LL, JET A OX 3, 4 LGT When twr clsd ACTIVATE MALSR Rwy 05 and Rwy 23, REIL Rwy 32, HIRL Rwy 05-23, MIRL Rwy 14-32—CTAF. PAPI Rwy 14, Rwy 23 and Rwy 32 ops 24 hrs.

AIRPORT REMARKS: Attended 1100-0400Z†. Birds and wildlife on and invof arpt. CLSD to unsked acft ops with more than 31 pax seats exc 90 day PPR, call 508-991-6161. Twys A1 and A2 for air carrier acft only. Ldg fees for acft ovr 3,000 lbs. Flight Notification Service (ADCUS) available.

AIRPORT MANAGER: 508-991-6161

WEATHER DATA SOURCES: ASOS 126.85 (508) 992-0195. LAWRS.

COMMUNICATIONS: CTAF 118.1 ATIS 126.85 (508) 994-6277 UNICOM 122.95

Ⓡ **PROVIDENCE APP/DEP CON** 128.7 (Sun-Fri 1030-0530Z†, Sat 1030-0500Z†) other times ctc

BOSTON CENTER APP/DEP CON 124.85

TOWER 118.1 (1130-0300Z†) **GND CON** 121.9

CLEARANCE DELIVERY PHONE: For CD when Apch clsd ctc Boston ARTCC at 603-879-6859.

AIRSPACE: CLASS D svc 1130-0300Z†; other times CLASS G.

RADIO AIDS TO NAVIGATION: NOTAM FILE PVD.

PROVIDENCE (H) (DH) VORW/DME 115.6 PVD Chan 103 N41°43.46' W71°25.78' 112° 21.4 NM to fld. 49/14W.

VOR unusable:

085°-105° byd 12 NM blo 5,500'

085°-105° byd 8 NM blo 3,000'

106°-294° byd 30 NM blo 3,000'

295°-330° byd 30 NM blo 6,000'

331°-084° byd 30 NM blo 3,000'

DME unusable:

085°-105° byd 12 NM blo 5,500'

085°-105° byd 8 NM blo 3,000'

106°-152° byd 11 NM blo 2,000'

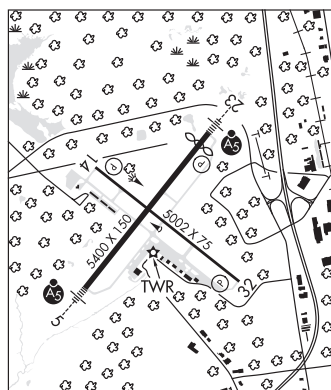
106°-152° byd 20 NM blo 4,000'

153°-294° byd 30 NM blo 3,000'

295°-330° byd 30 NM blo 6,000'

331°-084° byd 30 NM blo 3,000'

ILS/DME 109.7 I-EWB Chan 34 Rwy 05. Unmonitored when ATCT clsd. Autopilot cpd apch blw 470' na. Localizer backcourse unusable 15° left and r of course; byd 12 NM. Backcourse DME unusable 15° left and r of course; byd 12 NM.



NEWBURYPORT

PLUM ISLAND (2B2) 1 SE UTC-5(-4DT) N42°47.72' W70°50.37'

NEW YORK

11 NOTAM FILE BDR

RWY 14-32: 2300X100 (TURF)

RWY 14: Trees.

RWY 32: Trees.

RWY 10-28: H2105X50 (ASPH) S-8

RWY 10: Trees.

RWY 28: Thld dsplcd 300'. Fence.

SERVICE: S4 FUEL 100LL

AIRPORT REMARKS: Attended Apr-Sep 1300-2300Z†. Attended irregularly Oct-Mar. Wildlife invof arpt. No touch and go allowed. Ctc mgr for all arpt use reqs. Owner does not oversee ops.

AIRPORT MANAGER: 978-463-4222

COMMUNICATIONS: CTAF/UNICOM 123.0

Ⓡ **BOSTON APP/DEP CON** 124.4 Cinc Del thru Bridgeport Radio (BDR) 1-866-293-5149.

CLEARANCE DELIVERY PHONE: For CD ctc Boston Apch at 603-594-5552.