

**WORCESTER RGNL** (ORH)(KORH) 3 W UTC-5(-4DT) N42°16.03' W71°52.54'

NEW YORK

1009 B LRA Class I, ARFF Index B NOTAM FILE ORH

H-101, 11D, 12K, L-33C, 34J

**RWY 11-29:** H7001X150 (ASPH-GRVD) S-120, D-250, 2S-138,

IAP, AD

2D-550 PCR 1400 F/D/W/T HIRL CL

**RWY 11:** ALSF2. TDZL. PAPI(P4R)—GA 3.0° TCH 55'. RVR-TMR Hill.

**RWY 29:** REIL. PAPI(P4L)—GA 3.0° TCH 54'. RVR-TMR

**RWY 15-33:** H5000X100 (ASPH-GRVD) S-85, D-120, 2S-138,

2D-210 PCR 470 F/D/W/T MIRL

**RWY 15:** REIL. VASI(V4L)—GA 3.6° TCH 42'. Antenna.

**RWY 33:** REIL. PAPI(P4L)—GA 3.0° TCH 40'.

**RUNWAY DECLARED DISTANCE INFORMATION**

**RWY 11:** TORA-7001 TODA-7001 ASDA-7001 LDA-7001

**RWY 15:** TORA-5000 TODA-5000 ASDA-5000 LDA-5000

**RWY 29:** TORA-7001 TODA-7001 ASDA-7001 LDA-7001

**RWY 33:** TORA-5000 TODA-5000 ASDA-5000 LDA-5000

**ARRESTING GEAR/SYSTEM**

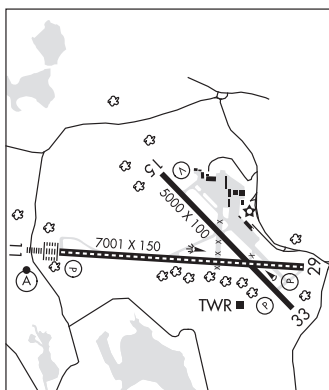
**RWY 11:** EMAS

**RWY 29:** EMAS

**SERVICE:** S4 FUEL 100LL, JET A LGT Actvt REIL Rwy 15, 29 and 33;

HIRL Rwy 11-29; MIRL Rwy 15-33—CTAF. Rwy 11 ALSF-2 becomes

SSALS preset on med instst only when twr clsd. Rwy 15 VASI unubl byd 9° left of crs.



**AIRPORT REMARKS:** Attended continuously. Wildlife and birds on and invof arpt. Use ctn for arpt vehicles mnt CTAF and operg on arpt durg non twr hrs. Rwy guard lgts installed on all twy to rwy intersections, Rwy 11-29 only. EMAS 170' wide, 154' length located at DER 11. EMAS 170' wide, 300' length located at DER 29. Ldg fee for multi-eng acft and lrg. Flight Notification Service (ADCUS) available. 2 hours advance notice for customs.

**AIRPORT MANAGER:** 508-849-5550

**WEATHER DATA SOURCES:** ASOS (508) 795-7546

**COMMUNICATIONS:** CTAF 120.5 ATIS 126.55 (508) 757-0962 UNICOM 122.95

RCO 122.2 (BRIDGEPORT RADIO)

Ⓡ **BRADLEY APP/DEP CON** 119.0 **CLNC DEL** 119.0 (0200-1130Z‡)

**TOWER** 120.5 (1130-0200Z‡) **GND CON** 123.85 **CLNC DEL** 128.65

**AIRSPACE:** CLASS D svc 1130-0200Z‡; other times CLASS E.

**VOR TEST FACILITY (VOT)** 108.2

**RADIO AIDS TO NAVIGATION:** NOTAM FILE BDR.

**GARDNER (L) (L) VOR/DME** 116.95 GDM Chan 116(Y) N42°32.76' W72°03.49' 168° 18.6 NM to fld. 1280/14W.

**ILS/DME** 110.9 I-RSR Chan 46 Rwy 11. Class III/E. Unmonitored when ATCT closed. DME unusable byd 12° left of course; byd 13 NM; byd 25° right of course.

**ILS/DME** 110.9 I-EKW Chan 46 Rwy 29. Class IB. Unmonitored when ATCT clsd. Glideslope unusable for coupled apchs blo 1,266' MSL. LOC unusable byd 25° left and byd 25° right of course.

**COMM/NAV/WEATHER REMARKS:** Durg sn removal ops, 30 min PPR, freq 120.50 durg twr hrs, freq 119.0 durg non twr hrs or call 508-799-1325. Tsnt acft ctc FBO on 122.95 for svcs.