

MILLVILLE MUNI (MIV)(KMIV) 3 SW UTC-5(-4DT) N39°22.07' W75°04.33'

WASHINGTON

85 B NOTAM FILE MIV

H-101, 12J, L-34G, A
IAP

RWY 10-28: H6003X150 (ASPH-GRVD) S-120, D-179, 2S-83,
2D-263 PCN 55 F/D/W/T MIRL

RWY 10: MALSR. PAPI(P4L)—GA 3.0° TCH 53'. Trees.

RWY 28: PAPI(P4L)—GA 3.0° TCH 29'.

RWY 14-32: H5058X150 (CONC) S-45.5, D-68, 2S-83, 2D-229
PCN 19 R/C/W/T MIRL

RWY 14: PAPI(P4L)—GA 3.0° TCH 48'. Trees.

RWY 32: PAPI(P4L)—GA 3.0° TCH 39'. Trees.

SERVICE: S8 FUEL 100LL, JET A LGT ACTIVATE MALSR Rwy 10; MIRL
Rwy 10-28 and Rwy 14-32—CTAF.

AIRPORT REMARKS: Attended 1300-2100Z†. Birds on and invof arpt. PAEW
within all rwy and twy safety areas daily May-Oct. All ultralight acft,
glider ops and formation flts PPR. Call 856-825-1244 Mon-Fri
1300-2100Z†. Self-svc fuel avbl 24 hrs with credit card. Main apron
clsd to tran acft north of Twy K. Twy G not to be used by acft with
wingspan grtr than 48' north of Twy A. Fence line 44' north of Twy G
cntrln, north of Twy A. Rwy 10 calm wind rwy.

AIRPORT MANAGER: 856-825-1244

WEATHER DATA SOURCES: ASOS 119.6 (856) 327-3455.

COMMUNICATIONS: CTAF/UNICOM 123.0

RCO 122.2 (MILLVILLE RADIO)

Ⓡ ATLANTIC CITY APP/DEP CON 124.6

CLEARANCE DELIVERY PHONE: For CD if una to ctc on FSS freq, ctc Atlantic City approach at 609-485-6193.

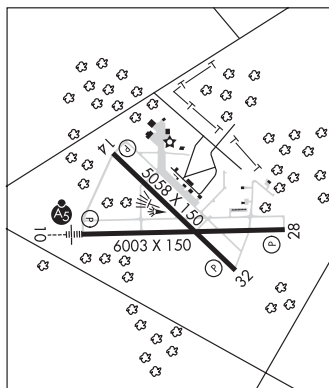
AIRSPACE: CLASS E.

RADIO AIDS TO NAVIGATION: NOTAM FILE MIV.

CEDAR LAKE (L) (L) VORW/DME 115.2 VCN Chan 99 N39°32.26' W74°58.03' 216° 11.3 NM to fld. 120/10W.

RAINBOW NDB (HW) 363 RNB N39°25.09' W75°08.10' 147° 4.2 NM to fld. 92/11W.

ILS 110.9 I-MIV Rwy 10. Class IA. Unmonitored. Autopilot cpd apch NA blw 300 MSL.



MONMOUTH EXEC (See BELMAR/FARMINGDALE on page 160)