

**DANVILLE RGNL** (DAN)(K DAN) 3 E UTC-5(-4DT) N36°34.35' W79°20.18'

571 B TPA—See Remarks NOTAM FILE DAN

**RWY 02-20:** H5900X100 (ASPH-GRVD) S-90, D-130, 2S-165

HIRL 0.5% up N

**RWY 02:** MALSR. PAPI(P4L)—GA 3.0° TCH 55'. Tree.

**RWY 20:** REIL. PAPI(P4L)—GA 3.0° TCH 47'. Thld dsp lcd 300'. Tree.

**RWY 13-31:** H3910X100 (ASPH) S-90, D-130, 2S-165 MIRL 1.1% up NW

**RWY 13:** REIL. VASI(V2L)—GA 3.0° TCH 28'. Tree.

**RWY 31:** REIL. PAPI(P2L)—GA 4.0° TCH 76'. Trees.

**RUNWAY DECLARED DISTANCE INFORMATION**

**RWY 02:** TORA-5600 TODA-5900 ASDA-5600 LDA-5600

**RWY 20:** TORA-5900 TODA-5900 ASDA-5900 LDA-5600

**SERVICE:** S4 FUEL 100LL, JET A+ LGT ACTIVATE HIRL Rwy 02-20, MIRL Rwy 13-31, REIL Rwy 13, Rwy 31, and Rwy 20, MALSR Rwy 02, VASI Rwy 13 and PAPI Rwy 02, Rwy 20 and Rwy 31—CTAF.

**AIRPORT REMARKS:** Attended 1200-0000Z†. Arpt unattended Christmas Day. Birds and deer on and in/ov arpt. Trees penetrating 7:1 transitional sfc of Rwy 31 both sides, first 1000'. Ctc arpt administration prior to conducting specialized aero activities 434-799-5110. TPA-1371 (800) lgt acft, 2071 (1500) turbine acft. Rwy 02 is designated calm wind rwy.

**AIRPORT MANAGER:** 434-799-5110

**WEATHER DATA SOURCES:** ASOS 128.125 (434) 799-1701.

**COMMUNICATIONS:** CTAF/UNICOM 123.05

RCO 122.2 (LEESBURG RADIO)

Ⓡ WASHINGTON CENTER APP/DEP CON 124.05

**CLEARANCE DELIVERY PHONE:** For CD if una to ctc on FSS freq, ctc Washington ARTCC at 703-771-3587.

**AIRSPACE:** CLASS E svc continuous.

**RADIO AIDS TO NAVIGATION:** NOTAM FILE DCA.

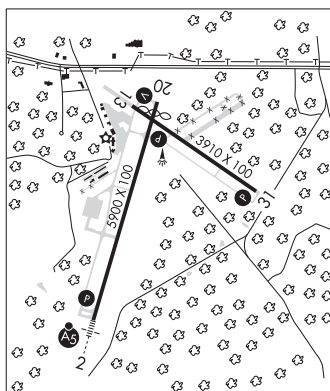
**SOUTH BOSTON (L) (L) VORTAC** 110.4 SBV Chan 41 N36°40.50' W79°00.87' 254° 16.7 NM to fld. 520/5W.

ILS 110.7 I-DAN Rwy 02. Class I E.

CINCINNATI

H-9C, 121, L-261, 36G

IAP



**DAVEE** N38°39.70' W77°06.61' NOTAM FILE DCA.

**NDB (HW) 223 DAA** 323° 4.6 NM to Davison AAF. 53/9W.

Unusable:

Byd 15 NM

WASHINGTON

L-29E, 34E, 36I