

**PARKERSBURG****MID—OHIO VALLEY RGNL** (PKB)(KPKB) P (ARNG) 6 NE UTC-5(-4DT) N39°20.70'**CINCINNATI**

W81°26.36'

**H-10G, 12I, L-29B**  
**IAP, AD**

859 B Class I, ARFF Index A NOTAM FILE PKB

**RWY 03-21:** H7240X150 (ASPH-GRVD) S-85, D-100, 2D-175

PCN 31 R/C/X/T HIRL 0.8% up NE

**RWY 03:** MALSR. PAPI(P4L)—GA 3.0° TCH 49'. RVR-TR**RWY 21:** REIL. PAPI(P4R)—GA 3.0° TCH 56'. RVR-TR Thld dsplcd 460'.**RWY 10-28:** H4002X150 (ASPH-GRVD) S-50, D-75, 2D-135

PCN 30 R/C/X/T HIRL

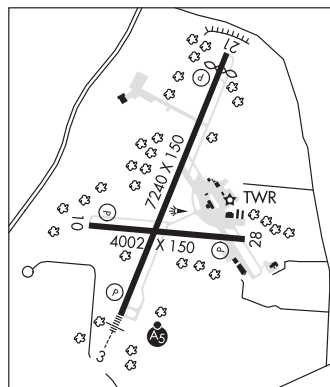
**RWY 10:** REIL. PAPI(P2L)—GA 3.0° TCH 46'.**RWY 28:** REIL. PAPI(P2L)—GA 3.0° TCH 43'.**RUNWAY DECLARED DISTANCE INFORMATION****RWY 03:** TORA-7240 TODA-7240 ASDA-6780 LDA-6780**RWY 10:** TORA-4002 TODA-4002 ASDA-4002 LDA-4002**RWY 21:** TORA-7240 TODA-7240 ASDA-7240 LDA-6780**RWY 28:** TORA-4002 TODA-4002 ASDA-4002 LDA-4002**SERVICE:** S2 **FUEL** 100LL, JET A **LGT** When ATCT clsd actvt MALSR  
Rwy 03; REIL Rwy 10 & 21; HIRL Rwy 03-21 & 10-28—CTAF. PAPI  
Rwy 03 & 21 opr consly. REIL Rwy 28 unavbl when ATCT clsd. Rwy  
21 PAPI unusbl byd 5 degs left and 9 degs right of cntrln. Rwy 28 PAPI  
usubl byd 8 degs left and 8 degs right of cntrln. **MILITARY—FUEL** A+,  
A, JP8 (Opr 1030-00430Z‡ C304-464-5113, OT 2 hr PN C304-464-5115 fee \$55.). (NC-100LL)**AIRPORT REMARKS:** Attended continuously. Birds and deer on and invof arpt. PPR 30 min for unscheduled air carrier ops with  
more than 30 passenger seats, call arpt manager 304-464-5115. No ldg fee for acct less than 6,500 lbs. for acct greater  
than 6,500, ldg fee waived with fuel purchases.**AIRPORT MANAGER:** 304-464-5113**WEATHER DATA SOURCES:** ASOS (304) 464-1001**COMMUNICATIONS:** CTAF 123.7 ATIS 124.35 UNICOM 122.95**PARKERSBURG RCO** 122.2 (ELKINS RADIO)Ⓡ **INDIANAPOLIS CENTER APP/DEP CON** 125.55**PARKERSBURG TOWER** 123.7 (1200-0400Z‡) **GND CON** 126.45**CLEARANCE DELIVERY PHONE:** When ATCT clsd, for CD ctc Indianapolis ARTCC at 317-247-2411.**AIRSPACE:** CLASS D svc 1200-0400Z‡; other times CLASS E.**RADIO AIDS TO NAVIGATION:** NOTAM FILE PKB.**PARKERSBURG (L) (L) VORW/DME** 114.45 JPU Chan 91(Y) N39°26.47' W81°22.49' 211° 6.5 NM to fld.  
1016/3W.**VERSI NDB (LOMW)** 388 PK N39°15.24' W81°29.10' 028° 5.9 NM to fld. 812/7W.

NDB unusable:

000°-094° byd 10 NM blo 3,000'

095°-149°

150°-210° byd 10 NM

**ILS** 110.7 I-PKB Rwy 03. Class IB. LOM VERSI NDB. LOM unmonitored.**PARKERSBURG** N39°26.47' W81°22.49' NOTAM FILE PKB.  
(L) (L) **VORW/DME** 114.45 JPU Chan 91(Y) 211° 6.5 NM to Mid-Ohio Valley Rgnl. 1016/3W.  
**RCO** 122.2 (ELKINS RADIO)**CINCINNATI****H-10G, 12H, L-29B**