

KALISPELL

GLACIER PARK INTL (GPI)(KGPI) 6 NE UTC-7(-6DT) N48°18.63' W114°15.36'

2977 B LRA Class I, ARFF Index B NOTAM FILE GPI

RWY 02-20: H9007X150 (ASPH-GRVD) S-115, D-198, 2S-175,

2D-321 PCR 513 F/B/X/T HIRL

RWY 02: MALSR. PAPI(P4L)—GA 3.0° TCH 50'.

RWY 20: REIL. PAPI(P4L)—GA 3.0° TCH 45'.

RWY 12-30: H3510X75 (ASPH-GRVD) S-25, D-40 PCR 80 F/C/X/T

MIRL

RWY 30: PAPI(P2L)—GA 3.5° TCH 26'.

RUNWAY DECLARED DISTANCE INFORMATION

RWY 02: TORA-9007 TODA-9007 ASDA-9007 LDA-9007

RWY 12: TORA-3510 TODA-3510 ASDA-3510 LDA-3510

RWY 20: TORA-9007 TODA-9007 ASDA-9007 LDA-9007

RWY 30: TORA-3510 TODA-3510 ASDA-3510 LDA-3510

SERVICE: S4 FUEL 100LL, JET A OX 1, 2 LGT ACTVT MALSR Rwy

02; REIL Rwy 20; HIRL Rwy 02-20; MIRL Rwy 12-30—CTAF. PAPI

Rwy 02, Rwy 20 and Rwy 30 opr consly.

AIRPORT REMARKS: Attended continuously. Skydiving ops 6 NM NW

13000' and blw SR—SS June-Sep. PAJA status—Salt Lake ARTCC.

VFR tfc ops at Kalispell City arpt 8 NM S and Whitefish arpt 6 NM

NW. Clsd to unskd acr ops more than 30 pax seats exc PPR—amgr.

Cold temperature airport. Altitude correction required at or below

-15C. Ldg fee.

AIRPORT MANAGER: 406-257-5994

WEATHER DATA SOURCES: ASOS 132.625 (406) 756-8879.

COMMUNICATIONS: CTAF 124.55 ATIS 132.625 UNICOM 122.95

LAKESIDE RCO 122.5 (GREAT FALLS RADIO)

Ⓡ **SALT LAKE CENTER APP/DEP CON** 127.075

TOWER 124.55 (1500-0700Z±) **GND CON** 121.6

AIRSPACE: CLASS D svc 1500-0700Z±; other times CLASS E.

RADIO AIDS TO NAVIGATION: NOTAM FILE FCA.

KALISPELL (VH) (DH) VORV/DME 113.2 FCA Chan 79 N48°12.85' W114°10.55' 313° 6.6 NM to fld. 2984/18E.

VOR unusable:

010°-070° byd 10 NM

070°-088° byd 20 NM blo 16,000'

071°-113° byd 40 NM

088°-113° byd 22 NM blo 13,000'

088°-113° byd 35 NM blo 16,000'

114°-121° byd 40 NM blo 15,500'

114°-121° byd 55 NM

122°-140° byd 40 NM

143°-149° byd 40 NM

160°-280° byd 30 NM blo 13,000'

171°-296° byd 40 NM

304°-308° byd 40 NM

312°-336° byd 40 NM

337°-347° byd 40 NM blo 12,000'

337°-347° byd 52 NM

348°-009° byd 40 NM

350°-010° byd 10 NM blo 23,000'

DME unusable:

010°-070° byd 10 NM

070°-113° byd 20 NM blo 16,000'

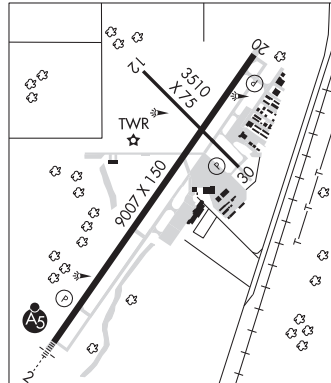
070°-113° byd 37 NM

160°-280° byd 30 NM blo 13,000'

350°-010° byd 10 NM blo 23,000'

SMITH LAKE NDB (MHW) 515 SAK N48°06.50' W114°27.67' 019° 14.7 NM to fld. 3157/15E.

ILS 111.5 I-GPI Rwy 02. Class IB. LOC unusable byd 23° right and left of course.



GREAT FALLS

H-1D, L-13C

IAP, AD