

MOSES LAKE

GRANT CO INTL (MWH)(KMWH) 5 NW UTC-8(-7DT) N47°12.52' W119°19.15'

SEATTLE
H-1C, L-13A
IAP, AD1189 B ARFF Index—See Remarks NOTAM FILE MWH
RWY 14L-32R: H13503X200 (CONC-GRVD) S-85, D-155, 2S-175,
2D-320, 2D/2D2-600 PCN 103R/B/W/T HIRL

RWY 14L: REIL. PAPI(P4L)—GA 3.0° TCH 75'. Bldg.

RWY 32R: MALSR. PAPI(P4L)—GA 3.0° TCH 76'. Rgt tfc.

RWY 04-22: H10000X100 (CONC-GRVD) S-75, D-100, 2S-127,
2D-175, 2D/2D2-475 PCN 92 R/B/W/T MIRL

RWY 04: REIL. PAPI(P4L)—GA 3.0° TCH 49'. 0.4% down.

RWY 22: REIL. VASI(V4L)—GA 3.0° TCH 50'. Rgt tfc. 0.3% up.

RWY 09-27: H3500X90 (CONC-GRVD) S-100, D-150, 2S-270,
2D-270, 2D/2D2-475 PCN 53 R/B/W/T RWY LGTS(NSTD)
0.3% up NW

RWY 27: Rgt tfc.

RWY 18-36: H3327X75 (ASPH) S-75, D-170, 2S-175, 2D-300,
2D/2D2-400 PCN 112F/A/W/T MIRL

RWY 18: Rgt tfc.

RWY 14R-32L: H2936X75 (CONC) S-100, D-200, 2S-175, 2D-400,
2D/2D2-400 PCN 107R/B/W/T

RWY 14R: Ground. Rgt tfc.

LAND AND HOLD—SHORT OPERATIONS

LDG RWY	HOLD—SHORT POINT	AVBL LDG DIST
RWY 04	14L-32R	4700
RWY 14L	04-22	7550
RWY 22	14L-32R	4650
RWY 32R	04-22	5050

RUNWAY DECLARED DISTANCE INFORMATION

RWY 04: TORA-10000 TODA-10000 ASDA-10000 LDA-10000

RWY 09: TORA-3500 TODA-3500 ASDA-3500 LDA-3500

RWY 14L: TORA-13503 TODA-13503 ASDA-13503 LDA-13503

RWY 14R: TORA-2936 TODA-2936 ASDA-2936 LDA-2936

RWY 22: TORA-10000 TODA-10000 ASDA-10000 LDA-10000

RWY 27: TORA-3500 TODA-3500 ASDA-3500 LDA-3500

RWY 32L: TORA-2936 TODA-2936 ASDA-2936 LDA-2936

RWY 32R: TORA-13503 TODA-13503 ASDA-13492 LDA-13492

SERVICE: S4 FUEL 100LL, JET A, A1+ OX1 LGT ACTVT MALSR Rwy 32R; REIL Rwy 04; PAPI Rwy 14L—CTAF. Rwy 09-27 mil ldg zone lgts only.

AIRPORT REMARKS: Attended continuously. Rwy 09-27 CLOSED exc mil ops; C-17 assault strip. Not vis fm ATCT. Birds invof arpt Apr and Oct. Rwy 14L conc tdz fst 3240 ft; Rwy 32R conc tdz fst 1490 ft. Class IV, ARFF Index A. PPR for air carrier ops with grt than 30 pax seats 0600-1400Z† - 509-762-5363. ARFF dep Index D H24. Twy F not vis fm ATCT. No edge intensity lgts. Rwy 32R fst 10,000' grvd 150' wide. Twy G unlighted. Hvy mil jet ngt training 0300-1100Z†. When ATCT clsd annc lndg intrns—CTAF. Hvy jet trng sfc to 5000' wi 25 mi; psbl wake turb fm Rwy 09-27 and Rwy 14L-32R. Acr twy mov area only. Rapid rfi mil hel svc 1 hr PPR bfr lndg - C509-762-2222 or 122.95; procd to trml ramp. Rapid rfi avbl dalgt. Ldg fee. Landing fees ovr 12,500.

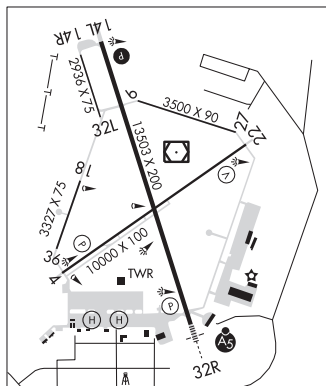
AIRPORT MANAGER: 509-762-5363**WEATHER DATA SOURCES:** ASOS 119.05 (509) 762-5082. LAWRS.**COMMUNICATIONS:** CTAF 118.25 ATIS 119.05 UNICOM 122.95

MOSES LAKE RCO 122.4 (SEATTLE RADIO)

Ⓡ GRANT COUNTY APP/DEP CON 126.4 (1400-0600Z†)

Ⓡ SEATTLE CENTER APP/DEP CON 126.1 (0600-1400Z†)

TOWER 128.0 (WEST) 118.25 (EAST) (1400-0600Z†) GND CON 121.9

AIRSPACE: CLASS D svc 1400-0600Z†; other times CLASS E.

CONTINUED ON NEXT PAGE

CONTINUED FROM PRECEDING PAGE

RADIO AIDS TO NAVIGATION: NOTAM FILE MWH.

MOSES LAKE (VH) (DH) VORW/DME 115.0 MWH Chan 97 N47°12.65' W119°19.01' at fld. 1193/18E.

VOR unusable:

025°-040° byd 40 NM
 055°-070° byd 40 NM
 071°-081° byd 40 NM blo 28,000'
 175°-198° byd 40 NM blo 6,000'
 175°-198° byd 67 NM blo 10,000'
 175°-198° byd 70 NM
 200°-210° byd 40 NM
 220°-230° byd 40 NM
 240°-253° byd 40 NM blo 18,000'
 254°-260° byd 40 NM
 315°-345° byd 40 NM

PELLEY NDB (MHW/LOM) 408 MW N47°06.94' W119°16.47' 324° 5.9 NM to fld. 1136/18E.

ILS 109.5 I-MWH Rwy 32R. Class IB. LOM PELLEY NDB. ILS and COMLO unmonitored when ATCT clsd.

HELIPAD H1: H50X50 (ASPH)

HELIPAD H2: H50X50 (ASPH)

MOSES LAKE MUNI (W20) 2 NE UTC-8(-7DT) N47°08.52' W119°14.27'

SEATTLE

1203 B NOTAM FILE SEA

RWY 16-34: H2513X50 (ASPH) S-8 MIRL

RWY 16: PAPI(P2L)—GA 3.0°. Thld dsplcd 466'. Tree.

RWY 34: PAPI(P2L)—GA 3.0°. Thld dsplcd 253'. Bldg. Rgt tfc.

SERVICE: S4

AIRPORT REMARKS: Unattended. Bird haz. Ultralgt opr reqd to obtain arpt safety briefing from arpt mgnt prior to initial use of arpt. Pilots bring own ropes.

AIRPORT MANAGER: (509) 764-3777

COMMUNICATIONS: CTAF/UNICOM 123.0

CLEARANCE DELIVERY PHONE: For CD ctc Grant County Apch at 509-762-2842, when Apch clsd ctc Seattle ARTCC at 253-351-3694.

MOSES LAKE N47°12.65' W119°19.01' NOTAM FILE MWH.

SEATTLE

(VH) (DH) VORW/DME 115.0 MWH Chan 97 at Grant Co Intl. 1193/18E.

H-1C, L-13A

VOR unusable:

025°-040° byd 40 NM
 055°-070° byd 40 NM
 071°-081° byd 40 NM blo 28,000'
 175°-198° byd 40 NM blo 6,000'
 175°-198° byd 67 NM blo 10,000'
 175°-198° byd 70 NM
 200°-210° byd 40 NM
 220°-230° byd 40 NM
 240°-253° byd 40 NM blo 18,000'
 254°-260° byd 40 NM
 315°-345° byd 40 NM

RCO 122.4 (SEATTLE RADIO)

MOUNT CONSTITUTION N48°40.79' W122°50.48'

SEATTLE

RCO 122.3 (SEATTLE RADIO)

L-1E

NORMAN GRIER FLD (See KENT on page 245)