

PASCO

TRI-CITIES (PSC)(KPSC) 2 NW UTC-8(-7DT) N46°15.88' W119°07.14'

410 B Class I, ARFF Index B NOTAM FILE PSC

RWY 03L-21R: H7707X150 (ASPH-GRVD) S-150, D-200, 2S-175,

2D-400 PCR 384 F/B/X/U HIRL

RWY 03L: REIL. PAPI(P4L)—GA 3.0° TCH 49'. RVR-R Tree.

RWY 21R: MALSR. PAPI(P4L)—GA 3.0° TCH 54'. RVR-T Thld dsplcd 597'. Pole. Rgt tfc.

RWY 12-30: H7704X150 (ASPH-GRVD) S-150, D-200, 2S-175,

2D-400 PCR 466 F/B/X/T MIRL

RWY 12: REIL. VASI(V4L)—GA 3.0° TCH 56'.

RWY 30: ODALS. PAPI(P4L)—GA 3.0° TCH 54'. Thld dsplcd 200'. Tree.

RWY 03R-21L: H4423X75 (ASPH) S-52, D-85, 2S-108, 2D-108,

2D/2D2-150 PCN 13 F/B/X/T

RWY 03R: Rgt tfc.

RWY 21L: Tower.

RUNWAY DECLARED DISTANCE INFORMATION

RWY 03L:TORA-7707 TODA-7707 ASDA-7707 LDA-7707

RWY 03R:TORA-4423 TODA-4423 ASDA-4423 LDA-4423

RWY 12: TORA-7704 TODA-7704 ASDA-7504 LDA-7504

RWY 21L:TORA-4423 TODA-4423 ASDA-4423 LDA-4423

RWY 21R:TORA-7707 TODA-7707 ASDA-7707 LDA-7110

RWY 30: TORA-7704 TODA-7704 ASDA-7704 LDA-7504

SERVICE: S4 FUEL 100LL, JET A1+ OX2 LGT When twr clsd HIRL Rwy 03L-21R and MIRL Rwy 12-30 preset on low intensity to increase intensity and ACTIVATE MALSR Rwy 21R and ODALS Rwy 30—CTAF.

AIRPORT REMARKS: Attended 1600-0400Z†. After hrs fuel call 509-547-6271 or 509-545-5524. Call out fee. Fuel 24 hour credit card svc avbl. Rwy 03R-21L sfc cracking. Waterfowl on and in vicinity of arpt spring and fall. PPR to unscheduled air carrier ops with more than 30 passenger seat call arpt manager 509-547-6352. Rwy 21L and Rwy 03R not avbl as movement area for air carrier acft with more than 9 passenger seats or greater for ldg and tkf. Rwy 03R-21L is avbl for air carrier acft for taxiing during dalgt and VFR conditions only. Twy G, G1 & E2 ltd to use by acft up to 100,000 lbs and less than 20 ft main gear wid.

AIRPORT MANAGER: 509-547-6352

WEATHER DATA SOURCES: ASOS (509) 547-7379 LAWRS. SAWRS.

COMMUNICATIONS: CTAF 135.3 ATIS 125.65 UNICOM 122.95

JUMP-OFF-JOE RCO 122.4 (SEATTLE RADIO)

Ⓡ SPOKANE APP/DEP CON 128.75 (N & W) 133.15 (E & S) (1400-0600z†) other times SEATTLE CENTER 132.6

TOWER 135.3 (1400-0600z†) GND CON 121.8 CLNC DEL 120.0

AIRSPACE: CLASS D svc 1400-0600Z†; other times CLASS E.

RADIO AIDS TO NAVIGATION: NOTAM FILE PSC.

PASCO (VL) (DH) VOR/DME 113.75 PSC Chan 84(Y) N46°16.22' W119°07.04' at fld. 406/15E.

DME unusable:

160°-172° byd 30 NM

201°-215° byd 35 NM

237°-245° byd 35 NM

VOR unusable:

015°-025° byd 40 NM blo 6,000'

015°-025° byd 53 NM

026°-055° byd 40 NM

155°-185° byd 40 NM

186°-202° byd 40 NM blo 5,400'

186°-202° byd 53 NM blo 6,000'

186°-202° byd 58 NM

203°-228° byd 40 NM

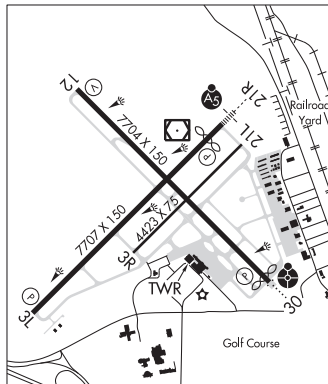
229°-239° byd 40 NM blo 6,000'

229°-239° byd 50 NM

268°-285° byd 40 NM

330°-014° byd 40 NM

ILS/DME 108.7 I-PSC Chan 24 Rwy 21R. Class IE. Unmonitored when ATCT closed.



SEATTLE

H-1C, L-13A

IAP, AD

PEARSON FLD (See VANCOUVER on page 286)

PELLY N47°06.94' W119°16.47' NOTAM FILE MWH.

NDB (MHW/LOM) 408 MW 324° 5.9 NM to Grant Co Intl. 1136/18E.

SEATTLE

L-13A