

SPOKANE

FELTS FLD (SFF)(KSFF) 4 NE UTC-8(-7DT) N47°40.98' W117°19.35'

1957 B LRA NOTAM FILE SFF

RWY 04L-22R: H4499X140 (CONC) S-30 MIRL

RWY 04L: REIL. VASI(V2L)—GA 3.0° TCH 50'.

RWY 22R: MALSR. VASI(V2R)—GA 3.5° TCH 44'. Tree. Rgt tfc.

RWY 04R-22L: H2650X75 (ASPH) S-30

RWY 04R: Rgt tfc.

RWY 22L: PAPI(P4L)—GA 3.8° TCH 39'. Tree.

RUNWAY DECLARED DISTANCE INFORMATION

RWY 04L:TORA-4499 TODA-4499 ASDA-4499 LDA-4499

RWY 04R:TORA-2650 TODA-2650 ASDA-2650 LDA-2650

RWY 22L:TORA-2650 TODA-2650 ASDA-2650 LDA-2650

RWY 22R:TORA-4499 TODA-4499 ASDA-4499 LDA-4499

SERVICE: S4 FUEL 100LL, JET A1+ OX 3, 4 LGT When twr clsd

ACTIVATE MIRL Rwy 04L-22R, MALSR Rwy 22R and REIL 04L-CTAF.

VASI Rwy 04L and VASI Rwy 22R opr continuously. PAPI Rwy 22L opr

SR-SS. Rwy 22L PAPI unusable byd 5° right side of cntrln.

AIRPORT REMARKS: Attended 1400-0400Z†. Waterfowl and birds on and in/ov arpt. Lgtd crane 1953' MSL (200' AGL) 1.25 NM east indef. Acft with tail heights over 20' must ctc twr prior to taxi. Twr unable to provide ATC svc on perimeter twy due to movement of unctd gnd tfc. Portions of Twy B not visible from twr. PPR for rotorwing acft conducting hover ops above 10' AGL in non-movement area ctc twr. Cold temperature airport. Altitude correction required at or below -16C. Flight Notification Service (ADCUS) avbl.

AIRPORT MANAGER: 509-455-6418

WEATHER DATA SOURCES: ASOS 120.55 (509) 535-3290.

COMMUNICATIONS: CTAF 132.5 ATIS 120.55 UNICOM 122.95

SPOKANE RCO 122.6 (SEATTLE RADIO)

Ⓡ SPOKANE APP/DEP CON 133.35

TOWER 132.5 (1400-0400Z†) GND CON 121.7 CLNC DEL 121.7

CLEARANCE DELIVERY PHONE: For CD if una to ctc on FSS freq, ctc Seattle ARTCC at 253-351-3694.

AIRSPACE: CLASS D svc 1400-0400Z†; other times CLASS E.

VOR TEST FACILITY (VOT) 114.0

RADIO AIDS TO NAVIGATION: NOTAM FILE GEG.

SPOKANE (VH) (H) VORTACW 115.5 GEG Chan 102 N47°33.90' W117°37.61' 046° 14.2 NM to fld. 2756/14E.

VOR unusable:

007°-022° byd 26 NM blo 7,000'

029°-041° byd 40 NM

307°-337° byd 30 NM blo 9,000'

342°-007° byd 18 NM blo 7,000'

342°-007° byd 25 NM

ILS/DME 111.7 I-FLZ Chan 54 Rwy 22R. Class IB. LOC unusable 0.2 NM fm rwy thld. DME unusable 15° rgt of course.

COMM/NAV/WEATHER REMARKS: Emerg frequency 121.5 not avbl at twr.

• • • • •

WATERWAY 03W-21W: 6000X100 (WATER)

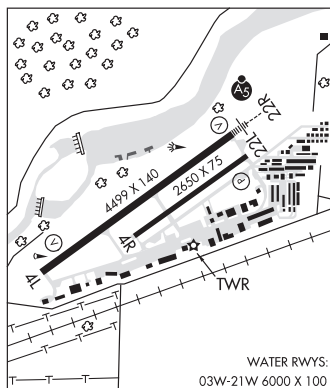
WATERWAY 21W: Rgt tfc.

SEAPLANE REMARKS: Extv boating in area of water rwy. Water lvl on river may be lwrdd by corps of engr. Water area adj to arpt not ctld or mntnd by arpt. Waterway elev 1910 estd. Waterway 03W-21W water rwy advsy svc only area not visible from twr. Ctc Felts twr 132.5 for tfc data.

SEATTLE

L-13B

IAP, AD



WATER RWYS:
03W-21W 6000 X 100