

**SWANSON FLD** (See EATONVILLE on page 234)

**TACOMA NARROWS** (TIW)(KTIW) 4 W UTC-8(-7DT) N47°16.08' W122°34.69'

SEATTLE  
H-1B, L-1D  
IAP, AD

295 B TPA-1295(1000) LRA NOTAM FILE TIW MON Airport

**RWY 17-35:** H5002X100 (ASPH-GRVD) S-50, D-80, 2S-102, 2D-80,  
2D/2D2-150 MIRL

**RWY 17:** MALSR. PAPI(P4R)—GA 3.0° TCH 52'.

**RWY 35:** REIL. PAPI(P4L)—GA 3.0° TCH 45'. Rgt t/c.

**SERVICE:** S4 FUEL 100LL, JET A OX 4 LGT When ATCT clsd, ACTV  
MALSR Rwy 17; REIL Rwy 35; PAPI Rwy 17 and 35; MIRL Rwy  
17-35—CTAF. Rwy 35 PAPI unusbl byd 5.0 degrees left of cntrln.

**NOISE:** Noise Abatement proc in efct - amgr.

**AIRPORT REMARKS:** Attended 1500-0000Z†. Deer on and invof arpt.

Customs - 253-593-6338 ext #2.

**AIRPORT MANAGER:** 253-798-8550

**WEATHER DATA SOURCES:** ASOS (253) 858-6507 LAWRS.

**COMMUNICATIONS:** CTAF 118.5 ATIS 124.05 UNICOM 122.95

Ⓡ SEATTLE APP/DEP CON 120.1

**TOWER** 118.5 (1600-0400Z†) **GND CON** 121.8

**CLEARANCE DELIVERY PHONE:** For CD when ATCT is clsd ctc Seattle Apch at  
206-214-4723.

**AIRSPACE:** CLASS D svc 1600-0400Z†; other times CLASS E.

**RADIO AIDS TO NAVIGATION:** NOTAM FILE TCM.

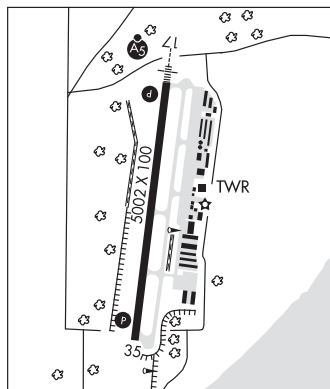
**MCCORD (T) TACAN** Chan 33 TCM (109.6) N47°08.86'

W122°28.50' 315° 8.4 NM to fld. 283/15E.

No NOTAM MP 0800-2300Z† Wed

ILS 109.1 I-TIW Rwy 17. Class IA. Unmonitored when ATCT clsd.

**COMM/NAV/WEATHER REMARKS:** Emerg freq 121.5 not mnt at ATCT. LAWRS ops durg ATCT hrs.



**TATOOSH** N48°17.99' W124°37.62' NOTAM FILE SEA.

SEATTLE  
H-1B, L-1D

(VH) (H) **VORTACW** 112.2 TOU Chan 59 151° 22.0 NM to Quillayute. 1650/22E.

VOR unusable:

020°-025° byd 40 NM

085°-090° byd 40 NM

091°-101° byd 40 NM blo 15,000'

091°-101° byd 58 NM

103°-109° byd 40 NM

356°-360° byd 40 NM

**RCO** 122.5 (SEATTLE RADIO)

## TEKOA

**WILLARD FLD** (73S) 2 NE UTC-8(-7DT) N47°14.13' W117°02.62'

SEATTLE

2520 B NOTAM FILE SEA

**RWY 04-22:** H2261X40 (ASPH) MIRL

**RWY 04:** Thld dspcld 190'. Trees.

**RWY 22:** Thld dspcld 240'.

**SERVICE:** S4 FUEL 100LL LGT ACTIVATE MIRL Rwy 04-22—122.8.

**AIRPORT REMARKS:** Unattended. Self svc fuel with credit card. Parachute Jumping. Grass areas not avbl for acft ops.

**AIRPORT MANAGER:** 509-322-8643

**COMMUNICATIONS:** CTAF 122.9

**CLEARANCE DELIVERY PHONE:** For CD ctc Seattle ARTCC at 253-351-3694.

**TIETON STATE** (See RIMROCK on page 270)