

**RAWLINS MUNI/HARVEY FLD** (RWL)(KRWL) 2 NE UTC-7(-6DT) N41°48.34' W107°12.02'  
 6817 B NOTAM FILE RWL  
**RWY 04-22:** H7008X100 (ASPH-GRVD) S-30, D-60 MIRL  
 1.0% up NE

**RWY 04:** PAPI(P4L)—GA 3.0° TCH 44'. Tank. Rgt tfc.  
**RWY 22:** REIL. PAPI(P4L)—GA 3.0° TCH 44'.  
**RWY 11-29:** H4322X60 (ASPH) S-12 MIRL 0.7% up W  
**RWY 29:** REIL. Rgt tfc.

**SERVICE:** FUEL 100LL, JET A LGT Actvt REIL Rwy 22 and 29; MIRL Rwy 04-22 and Rwy 11-29—CTAF. PAPI Rwy 04 and 22 opr consly.  
**NOISE:** Req all acft departing Rwy 29 make rgt turnout as soon as safety permits after tkf to avoid housing area and for noise abatement.

**AIRPORT REMARKS:** Attended Mon-Fri 1400-0200Z†, Sat-Sun 1400-0000Z†. Birds invof arpt rwys. Phone nr for fuel aft hrs posted on FBO door. Rwy 11-29 ltd to acft up to 12,000 lbs GWT.

**AIRPORT MANAGER:** 307-321-5566  
**WEATHER DATA SOURCES:** ASOS 118.525 (307) 328-0031.  
**COMMUNICATIONS:** CTAF/UNICOM 123.0  
 RCO 122.2 (CASPER RADIO)

Ⓡ **DENVER CENTER APP/DEP CON** 132.1

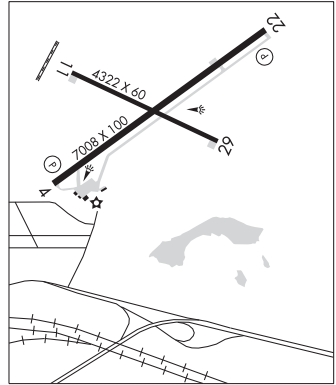
**CLEARANCE DELIVERY PHONE:** For CD if una to ctc on FSS freq, ctc Denver ARTCC at 303-651-4257.

**AIRSPACE:** CLASS E svc 1300-0500Z†; other times CLASS G.

**RADIO AIDS TO NAVIGATION:** NOTAM FILE CPR.

**CHEROKEE (VH) (H) VOR/DME** 115.0 CKW Chan 97 N41°45.34' W107°34.92' 065° 17.4 NM to fld. 7050/15E.

VOR unusable:  
 000°-015° byd 40 NM  
 082°-085° byd 40 NM  
 114°-116° byd 40 NM  
 125°-135° byd 40 NM



CHEYENNE  
 H-3E, L-11E  
 IAP

**RIVERTON**

**CENTRAL WYOMING RGNL** (RIW)(KRIW) 3 NW UTC-7(-6DT) N43°03.85' W108°27.59'  
 5516 B Class I, ARFF Index A NOTAM FILE RIW MON Airport  
**RWY 10-28:** H8204X150 (ASPH-GRVD) S-85, D-110, 2S-140, 2D-165  
 PCR 280 F/B/X/T HIRL

**RWY 10:** REIL. PAPI(P4L)—GA 3.0° TCH 49'. P-line. 1.1% down.  
**RWY 28:** MALSR. PAPI(P4R)—GA 3.0° TCH 50'. 0.7% up.  
**RWY 01-19:** H4800X75 (ASPH-GRVD) S-30, D-50 PCR 140 F/D/X/T  
 MIRL 0.4% up N  
**RWY 01:** REIL. PAPI(P2L)—GA 3.0° TCH 43'. P-line.  
**RWY 19:** REIL. PAPI(P2L)—GA 3.0° TCH 42'.

**RUNWAY DECLARED DISTANCE INFORMATION**

**RWY 01:** TORA-4800 TODA-4800 ASDA-4800 LDA-4800  
**RWY 10:** TORA-8204 TODA-8204 ASDA-8204 LDA-8204  
**RWY 19:** TORA-4800 TODA-4800 ASDA-4800 LDA-4800  
**RWY 28:** TORA-8204 TODA-8204 ASDA-8204 LDA-8204

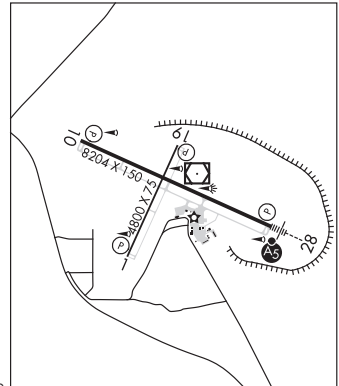
**SERVICE:** S4 FUEL 100LL, JET A QX4 LGT ACTIVATE HIRL Rwy 10-28, MIRL Rwy 01-19, REIL Rwy 01, Rwy 19 and Rwy 10 and MALSR Rwy 28—CTAF. PAPI Rwy 01, Rwy 10, Rwy 19 and Rwy 28 opr 24 hrs.

**AIRPORT REMARKS:** Attended Mon-Fri 1400-0000Z†. For svc after hrs call 307-856-3599. Conds not monitored at ngt aft the last arr til 0500L. See NOTAMS for the most up-to-date conds and updts. Multiple hot air balloons invof arpt dur July. PPR for unscheduled ops with more than 30 pax seats call arpt mgr 307-857-7780/307-856-7063. General aviation acft not authorized on west ramp.

**AIRPORT MANAGER:** 307-857-7780  
**WEATHER DATA SOURCES:** ASOS 121.425 (307) 856-4473.  
**COMMUNICATIONS:** CTAF/UNICOM 122.8  
 RIVERTON RCO 122.2 (CASPER RADIO)

Ⓡ **SALT LAKE CENTER APP/DEP CON** 133.25

**CLEARANCE DELIVERY PHONE:** For CD if una to ctc on FSS freq, ctc Salt Lake ARTCC at 801-320-2568.



CHEYENNE  
 H-3E, L-11E  
 IAP, AD

CONTINUED ON NEXT PAGE

## CONTINUED FROM PRECEDING PAGE

AIRSPACE: CLASS E.

RADIO AIDS TO NAVIGATION: NOTAM FILE RIW.

RIVERTON (VL) (DH) WORW/DME 114.05 RIW Chan 87(Y) N43°03.94' W108°27.33' at fld. 5458/10E.

VOR unusable:

133°-142° byd 40 NM

165°-281° byd 40 NM

322°-039° byd 40 NM

ILS 110.5 I-RIW Rwy 28. Class IE. Status is not remotely Monitored.

## ROCK SPRINGS

SOUTHWEST WYOMING RGNL (RKS)(KRKS) 7 E UTC-7(-6DT) N41°35.65' W109°03.91'

SALT LAKE CITY

6765 B ARFF Index—See Remarks NOTAM FILE RKS

H-3E, L-11E

RWY 09-27: H10000X150 (ASPH-GRVD) S-55, D-240, 2S-140,

IAP, AD

2D-503 PCR 1557 F/A/X/T HIRL

RWY 09: ODALS. PAPI(P4L)—GA 3.0° TCH 50'. 0.3% up.

RWY 27: MALSR. PAPI(P4L)—GA 3.0° TCH 55'. 0.4% down.

RWY 03-21: H5228X75 (ASPH-PFC) S-59, D-88, 2D-159

PCR 112 F/D/X/T MIRL 0.3% up NE

RWY 03: REIL. PAPI(P2L)—GA 3.0° TCH 30'.

RWY 21: REIL. PAPI(P2L)—GA 3.0° TCH 30'.

## RUNWAY DECLARED DISTANCE INFORMATION

RWY 03: TORA-5228 TODA-5228 ASDA-5228 LDA-5228

RWY 09: TORA-10000 TODA-10000 ASDA-10000 LDA-10000

RWY 21: TORA-5228 TODA-5228 ASDA-5228 LDA-5228

RWY 27: TORA-10000 TODA-10000 ASDA-10000 LDA-10000

SERVICE: S2 FUEL 100LL, JET A1+ QX 3, 4 LGT ACTVT MALSR Rwy 27; ODALS Rwy 09; REIL Rwy 03 &amp; 21, HIRL Rwy 09-27 &amp; twy lgts—CTAF. PAPI Rwy 09, 27, 03 and 21 opr constly.

AIRPORT REMARKS: Attended 1100-0500Z†. Class I, ARFF Index A. PPR for air carrier ops with gtr than 30 pax seats 0500Z-1100Z† call arpt ops - 307-352-6888. ARFF Index C avbl with 30 min notice - 307-352-6888.

AIRPORT MANAGER: 307-352-6880

WEATHER DATA SOURCES: ASOS 118.375 (307) 362-2541. SAWRS.

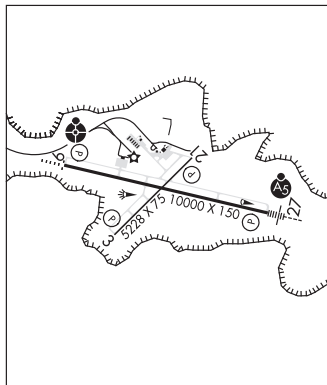
COMMUNICATIONS: CTAF/UNICOM 122.8

ROCK SPRINGS RCO 122.2 (CASPER RADIO)

® SALT LAKE CENTER APP/DEP CON 124.35

CLEARANCE DELIVERY PHONE: For CD if una to ctc on FSS freq, ctc Salt Lake ARTCC at 801-320-2568.

AIRSPACE: CLASS E.



CONTINUED ON NEXT PAGE