

**BOISE AIR TRML/GOWEN FLD** (BOI)(KBOI) P (ANG ARNG) 3 S UTC-7(-6DT) N43°33.86' W116°13.37'

**SALT LAKE CITY**  
H-1C, 3C, L-11B  
IAP, AD

2872 B LRA Class I, ARFF Index C NOTAM FILE BOI

**RWY 10L-28R:** H10000X150 (ASPH-GRVD) S-100, D-210, 2S-175, 2D-446, 2D/2D2-947 PCR 570 F/C/X/T HIRL

**RWY 10L:** REIL PAPI(P4R)—GA 3.0° TCH 53'. Antenna. 0.5% up.

**RWY 28R:** PAPI(P4L)—GA 3.0° TCH 70'. Rgt tfc. 0.3% down.

**RWY 10R-28L:** H9763X150 (ASPH-GRVD) S-100, D-210, 2S-175, 2D-430, 2D/2D2-994 PCR 930 F/C/X/T HIRL CL

**RWY 10R:** ALSF2. TDZL. VASI(V4L)—GA 3.0° TCH 64'. RVR-TMR Rgt tfc. 0.5% up.

**RWY 28L:** MALSR. TDZL. VASI(V4L)—GA 3.0° TCH 50'. RVR-TMR

**RUNWAY DECLARED DISTANCE INFORMATION**

**RWY 10L:**TORA-10000 TODA-10000 ASDA-10000 LDA-10000

**RWY 10R:**TORA-9763 TODA-9763 ASDA-9763 LDA-9763

**RWY 28L:**TORA-9763 TODA-9763 ASDA-9763 LDA-9763

**RWY 28R:**TORA-10000 TODA-10000 ASDA-10000 LDA-10000

**SERVICE:** S4 **FUEL** 100LL, JET A+ **OX** 1, 2, 3, 4 **LGT** Arpt lgt sched dusk to dawn. **MILITARY—JASU** 1(MC-1M) 6(AM32A-60)

4(A/M32A-86) **FUEL** A++ (Mil), A, A+ (1300-0600Z‡Mon-Fri;

1300-0300Z‡ Sat-Sun and hol, call C208-338-1833, 25 min PN rqr, \$90 fee.) (NC-100LL) **FLUID** PRESAIR OIL O-133-148(Mil) SOAP

**AIRPORT REMARKS:** Attended continuously. Hel ops sfc-3500' wi 1 NM E, W and 5 NM S of Rwy 10R-28L. Bird act wi 5 NM Oct-Mar. Arr/dep 0500-1400Z‡ PPR due to locked gates - FBO. MIL off bus only; PPR for arr regardless of prkg; ANG ramp 72 hr PPR - <http://www.124thfighterwing.ang.af.mil/>. PPR valid +/- 30 min. Tsnt full stop only. Go around or missed apch exp RT tfc. Coml ramp prkg - ctc gnd ctl bfr pushback. All twys clsd to wingspan over 170 ft exc 1 hr PPR - amgr. Twy B clsd btn Twy F and Twy C to wingspan over 147 ft 1 IN exc 1 hr PPR - amgr. Twy B clsd btn Twy C and Twy B1 to wingspan ovr 118 ft when E arm/dearm pad in use. Twy J north of Twy F clsd to wingspan over 94 ft when W arm/dearm pad in use. Twy S and Txl S clsd to wingspan ovr 170 ft btn Twy B and Twy SE cargo ramp. Txl S clsd to wingspan ovr 100 ft E of SE cargo ramp. Txl A5 clsd to wingspan ovr 55 ft. Ptns of Twy K and SW ramp not vsbl fm ATCT. Flight Notification Service (ADCUS) avbl Mon-Fri 1500-0000Z‡; wkend if notified by Thurs 0000Z‡. Cstms/AG/IMG: 1400-130Z‡ Mon-Fri, fone 24 hr bfr arr - 208-334-9062. NOTE: See Special Notices—Arrival Alert.

**AIRPORT MANAGER:** 208-972-8420

**WEATHER DATA SOURCES:** ASOS 123.9 (208) 318-5005.

**COMMUNICATIONS:** D-ATIS 123.9 **UNICOM** 122.95

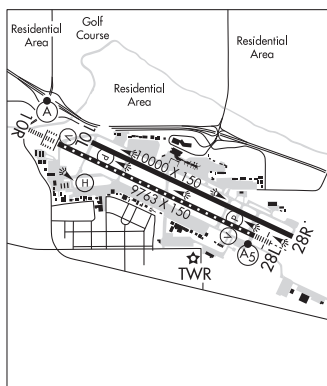
RCO 122.6 (BOISE RADIO)

® **BIG SKY APP/DEP CON** 119.6 (More than 15NM from BOI) 126.9 (Within 15NM of BOI)

**TOWER** 118.1 119.0 **GND CON** 121.7 **CLNC DEL** 125.9

PDC

**AIRSPACE:** CLASS C svc ctc **APP CON**.



**CONTINUED ON NEXT PAGE**

CONTINUED FROM PRECEDING PAGE

VOR TEST FACILITY (VOT) 116.7

RADIO AIDS TO NAVIGATION: NOTAM FILE BOI.

(VH) (H) VORTACW 113.3 BOI Chan 80 N43°33.17' W116°11.53' 280° 1.5 NM to fld. 2877/17E.

VOR unusable:

- 001°-044° byd 22 NM blo 11,000'
- 001°-044° byd 32 NM blo 14,500'
- 023°-033° byd 40 NM blo 15,500'
- 023°-033° byd 50 NM blo 18,000'
- 034°-081° byd 40 NM
- 045°-071° byd 32 NM blo 12,500'
- 072°-084° byd 32 NM blo 10,500'
- 082°-092° byd 40 NM blo 11,500'
- 082°-092° byd 53 NM blo 14,000'
- 082°-092° byd 71 NM blo 18,000'
- 093°-107° byd 40 NM
- 108°-118° byd 40 NM blo 9,500'
- 108°-118° byd 56 NM
- 119°-210° byd 40 NM
- 211°-221° byd 40 NM blo 9,400'
- 211°-221° byd 52 NM
- 222°-233° byd 40 NM
- 273°-283° byd 40 NM blo 6,000'
- 273°-283° byd 69 NM blo 9,000'
- 273°-283° byd 88 NM
- 284°-295° byd 40 NM

TACAN AZIMUTH unusable:

- 010°-060° byd 12 NM blo 13,000'
- 010°-060° byd 27 NM blo 15,500'
- 113°-155° byd 30 NM blo 7,000'
- 348°-010° byd 20 NM blo 13,000'
- 348°-010° byd 27 NM blo 15,500'

DME unusable:

- 010°-060° byd 12 NM blo 13,000'
- 010°-060° byd 27 NM blo 15,500'
- 113°-155° byd 30 NM blo 7,000'
- 348°-010° byd 20 NM blo 13,000'
- 348°-010° byd 27 NM blo 15,500'

VOR unusable:

- 296°-309° byd 40 NM blo 5,500'
- 296°-309° byd 46 NM blo 9,000'
- 296°-309° byd 84 NM blo 18,000'
- 315°-022° byd 40 NM

ILS/DME 111.1 I-BOI Chan 48 Rwy 10R. Class IIIE. DME unusable byd 33° right of LOC course.

ILS/DME 110.15 I-AAD Chan 38(Y) Rwy 28R. Class IE. DME unusable byd 12 NM blo 6,000'. Glideslope unusable byd 06 NM blo 4,700'. LOC unusable byd 12 NM blo 6,000'.



HELIPAD H1: H50X50 (ASPH)