

PATTERSON**HARRY P WILLIAMS MEML** (PTN)(KPTN) 2 NW UTC-6(-5DT) N29°42.57' W91°20.34'**HOUSTON**

9 B LRA NOTAM FILE PTN

RWY 06-24: H5399X150 (ASPH) S-32 MIRL**RWY 06:** REIL. PAPI(P2L)—GA 3.0° TCH 50'. Thld dsplcd 394'. Trees.**RWY 24:** MALSR. PAPI(P2L)—GA 3.0° TCH 50'. Rgt tfc.**SERVICE:** S4 FUEL 100LL, JET A LGT Actvt MALSR Rwy 24; MIRL

Rwy 06-24 preset med instt, to incr instt—CTAF.

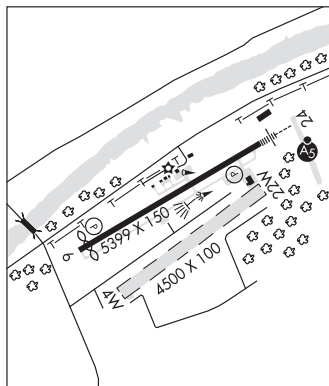
AIRPORT REMARKS: Attended continuously. Pilots conducting EFVS ops; be aware LED ALS in use. 4500' by 100' waterwy hdg 04-22 lctd 1100' south of conc rwy. Dual land/sea operation.**AIRPORT MANAGER:** 337-828-4100**WEATHER DATA SOURCES:** AWOS-3PT 134.575 (985) 395-6735.**COMMUNICATIONS:** CTAF/UNICOM 122.8**PATTERSON RCO** 122.5 (DE RIDDER RADIO)② **NEW ORLEANS APP/DEP CON** 124.3

CLNC DEL 124.3

CLEARANCE DELIVERY PHONE: For CD ctc New Orleans Apm at 504-471-4350 or 124.3.**RADIO AIDS TO NAVIGATION:** NOTAM FILE DRI.**TIBBY (VL) (DH) VOR/DME** 117.15 TBD Chan 118(Y) N29°39.86' W90°49.75' 274° 26.8 NM to fld. 10/2E.

VOR unusable:

244°-255° byd 40 NM

ILS/DME 108.3 I-PTN Chan 20 Rwy 24. Class IA. ILS mnt by FBO durg NMI oprg hrs.**WATERWAY 04W-22W:** 4500X100 (WATER)**WATERWAY 04W:** Road. Rgt tfc.**PETE ANTIE MUNI HELIPORT** (See MELVILLE on page 112)**PINEVILLE MUNI** (2LØ) 2 N UTC-6(-5DT) N31°20.53' W92°26.61'**HOUSTON**

100 B TPA—See Remarks NOTAM FILE DRI

L-21B, 22E**RWY 18-36:** H3000X75 (ASPH) S-15.5 MIRL 0.5% up N**RWY 18:** REIL. PAPI(P2L)—GA 4.0° TCH 68'. Trees.**RWY 36:** REIL. PAPI(P2R)—GA 3.0° TCH 49'. Trees.**SERVICE:** S4 FUEL 100LL, MOGAS OX 1, 2 LGT MIRL Rwy 18-36, REIL Rwy 18 and Rwy 36 preset low ints dusk-dawn. To increase ints ACTIVATE—CTAF. REILS OTS approach end Rwy 18. REILS OTS approach end Rwy 36.**AIRPORT REMARKS:** Attended Mon-Fri 1400-0000Z, Sat 1500-2000Z. Fuel avbl 24/7 with credit card. Rwy 18 drop off 95' from end of rwy. Rwy 36 lake 96' from end of rwy. TPA—780 (700) acft for water Rwy 05W-23W, 1100 (1000) fixed wing for Rwy 18-36. All Rwy 18-36 safety areas NSTD. Rwy 18 and Rwy 36, rwy markings faded.**AIRPORT MANAGER:** 318-449-5679**COMMUNICATIONS:** CTAF/UNICOM 122.8**CLEARANCE DELIVERY PHONE:** For CD ctc Polk Apm at 337-531-2352.**RADIO AIDS TO NAVIGATION:** NOTAM FILE AEX.**ALEXANDRIA (H) (H) VORTACW** 116.1 AEX Chan 108 N31°15.40' W92°30.06' 027° 5.9 NM to fld. 76/3E.

VOR unusable:

035°-065° blo 2,000'

066°-094° byd 35 NM blo 3,000'

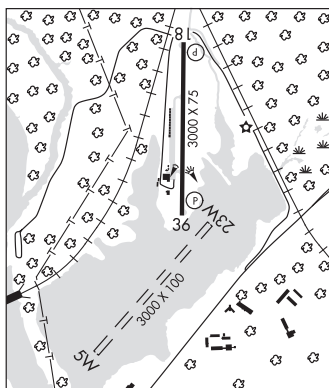
185°-200° byd 35 NM blo 3,000'

201°-214° byd 35 NM blo 2,000'

215°-260° blo 2,000'

261°-285° byd 35 NM blo 2,000'

357°-034° byd 35 NM blo 3,000'

**WATERWAY 05W-23W:** 3000X100 (WATER)**WATERWAY 23W:** Rgt tfc.**SEAPLANE REMARKS:** Waterway elevation 80'.