

MERIDIAN

KEY FLD (MEI)(KMEI) P (ANG ARNG) 3 SW UTC-6(-5DT) N32°19.97' W88°45.09'

298 B Class I, ARFF Index A NOTAM FILE MEI

RWY 01-19: H10003X150 (ASPH-CONC) S-120, D-250, 2D-550

PCN 104F/C/W/T HIRL

RWY 01: MALSR. PAPI(P4L)—GA 3.0° TCH 54'. RVR-T Thld dsplcd 990'.

RWY 19: MALSR. PAPI(P4L)—GA 3.0° TCH 69'. RVR-T Thld dsplcd 990'.

RWY 04-22: H5052X150 (ASPH) S-120, D-213, 2D-345

PCN 61 F/C/W/U MIRL

RWY 04: PAPI(P2L)—GA 3.13° TCH 45'. Trees.

RWY 22: PAPI(P2L)—GA 3.0° TCH 40'. Pole.

RUNWAY DECLARED DISTANCE INFORMATION

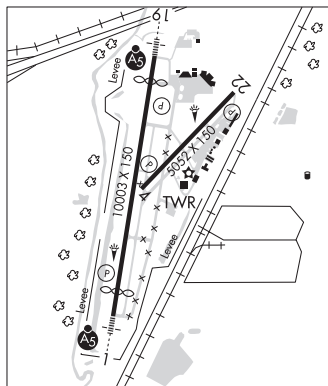
RWY 01: TORA-10003 TODA-10003 ASDA-10003 LDA-9013

RWY 04: TORA-5052 TODA-5052 ASDA-5052 LDA-5052

RWY 19: TORA-10003 TODA-10003 ASDA-10003 LDA-9013

RWY 22: TORA-5052 TODA-5052 ASDA-5052 LDA-5052

SERVICE: S4 **FUEL** 100LL, JET A, A++ **OX** 1, 2 **LGT** ACTIVATE
MALSR Rwy 01 and Rwy 19, MIRL Rwy 04-22, HIRL Rwy 01-19,
twy lghts—CTAF. **MILITARY**— **JASU** 10(M32A-60) (MD-3A) (MA-1A)
(MC-1) (MC-2A) **FUEL** A++ (Mil) A+(avbl 1100-0400Z†,
C601-693-7282, OT 2 hr PN rqr.) (NC-100LL, A) **FLUID** SP
PRESAIR OIL O-132-133-148(Mil)



MEMPHIS
H-6J, L-18G
IAP, AD

AIRPORT REMARKS: Attended 1200-0400Z†. For attendant after hrs call 601-693-7282. ANG provides ATC services at KMEI. Rwy 01-19 dthr conc. ANG ltd prkg use; rsc info avbl for ANG Ops durg nml duty hrs. All tran acct 48 hr PPR. OBO. Rwy 01-19 non-std RESA due to sfc varns.

MILITARY REMARKS: Opr 1200-0400Z†, OT fone C601-693-7282. **CAUTION** BASH Phase II period Mar-May, Sep-Nov. Ctc Afd Mgmt or Comd Post for current bird watch Cond. **ANG** Attended 1300-2230Z† Mon-Fri exc hol. ANG ramp clsd exc PPR, 601-484-9734/9714. ANG DSN 293-2829 C601-696-8829. RCR info avbl fr ANG Ops durg nml duty hr.

AIRPORT MANAGER: 601-482-0364

WEATHER DATA SOURCES: ASOS (601) 207-0082

COMMUNICATIONS: CTAF 133.975 ATIS 126.475 UNICOM 122.95

MERIDIAN RCO 122.1R 117.0T (GREENWOOD RADIO)

Ⓡ **MERIDIAN APP/DEP CON** 120.5 Opr 1200-0400Z† other times by NOTAM. Other times ctc

Ⓡ **MEMPHIS CENTER APP/DEP CON** 125.975

TOWER 133.975 (1200-0400Z†), other times by NOTAM.

GND CON 121.9 **CLNC DEL** 121.9

CLEARANCE DELIVERY PHONE: For CD ctc Memphis ARTCC at 901-368-8453/8449.

AIRSPACE: CLASS D svc 1200-0400Z†; other times by NOTAM; other times CLASS G.

RADIO AIDS TO NAVIGATION: NOTAM FILE MEI.

MERIDIAN (VH) (H) VORTAC 117.0 MEI Chan 117 N32°22.71' W88°48.26' 131° 3.8 NM to fld. 578/5E.

VOR unusable:

000°-042° byd 40 NM

054°-061° byd 40 NM blo 24,000'

062°-082° byd 40 NM blo 16,000'

083°-192° byd 40 NM

193°-203° byd 40 NM blo 18,000'

204°-209° byd 40 NM

210°-230° byd 40 NM blo 3,000'

210°-230° byd 49 NM blo 12,000'

210°-230° byd 60 NM blo 18,000'

231°-281° byd 40 NM

282°-292° byd 40 NM blo 6,000'

293°-359° byd 40 NM

ILS 110.1 I-MEI Rwy 01. Class IA. Unmonitored when ATCT closed.

ILS/DME 111.35 I-HKQ Chan 50(Y) Rwy 19.